



VENTILATION PRODUCTS



4 TIME ENERGY STAR® PARTNER OF THE YEAR
2017, 2013 and 2012 Partner of the Year
2014 Sustained Excellence & Climate Communications

Introduction

DL4 Series
ENERGY STAR® Certified
Exhaust Fan/LED Light



Products For an Ever Evolving Market

Air King is a leader in the ventilation industry, constantly introducing new and innovative products to the market. Air King's commitment to providing environmentally friendly products is evidenced by the expanding line of ENERGY STAR certified products throughout the exhaust fan category and into other categories such as Range Hoods. Air King's goal is to bring high quality, energy efficient products to the market at a value that makes them the *Smart Choice*.



IAQ Solutions

Air King's products are engineered to be the perfect answer to your Indoor Air Quality (IAQ) needs with full lines of ENERGY STAR certified exhaust fans, solutions to meet and exceed ASHRAE 62.2 for both continuous ventilation and local exhaust, along with many solutions to comply with the CALGreen specifications of California Title 24. Also make sure to see Air King's full line of ENERGY STAR qualified range hoods at www.airkinglimited.com.



CALGreen

The Air King Difference

Customer service is a title that everyone in our company shares. From our corporate staff to our nationwide network of manufacturer's representatives, we are dedicated to making sure your questions are addressed and answered quickly and accurately.

Selecting Your Fan	
Selecting Your Fan	Page 4
ASHRAE 62.2	
ASHRAE 62.2 Basics	Page 5
OUTDOOR AIR SOLUTIONS	
QuFresh by Air King	Page 6
ENERGY STAR® CERTIFIED EXHAUST FANS	
DC Motor Exhaust Fans	Page 7
ECO-Exhaust Fans	Page 8
ECO-Exhaust Fans with Light	Page 9
Variable Speed Fans	Page 10
Quiet Exhaust Fans	Page 11
Snap-In Exhaust Fans	Page 12
EXHAUST FANS WITH LIGHTS	
Exhaust Fans with Light	Page 13
Decorative Exhaust Fans with Light	Page 14
EXHAUST FANS	
Snap-In Exhaust Fans	Page 15
Economical Series Exhaust Fans	Page 15
Garage/Through the Wall Exhaust Fan	Page 15
HIGH VOLUME EXHAUST FANS	
High Volume Exhaust Fans	Page 16
HEATERS	
Combination Heaters	Page 17
Bulb Heater with Exhaust Fan	Page 17
FIRE RATED EXHAUST FANS (UL263, UL555C)	
Fire Rated Exhaust Fans	Page 18
ENERGY STAR Certified Fire Rated Exhaust Fans	Page 19
Switches and Timers	Page 20
Accessories	Page 21
Specifications	Pages 22 - 23

Selecting Your Fan

Air King offers a wide array of ventilation solutions including ENERGY STAR® certified, ASHRAE 62.2 options, fans to be used to comply with California Title 24 requirements, as well as UL555C and UL263 Fire Rated options to fit almost any residential application. Selecting the perfect Air King ventilation fan for your requirements can be done through the following considerations:

Determine Your CFM

CFM (Cubic Feet Per Minute) is the amount of air the fan is exhausting. Use the following equation to calculate the required CFM for a typical bathroom installation:

$$\text{Room Length} \times \text{Room Width} \times 1.1 = \text{Required CFM}$$

Choose The Sound Level (Sones)

The next consideration is the sound level which is measured in Sones. The lower the sone, the quieter the fan. A fan under one sone is considered very quiet. The sound level will have a direct impact on the cost of the fan - the lower the sound, typically the higher the price. Air King is unique in offering many products that are very quiet while still being budget friendly.



D4 Series
ENERGY STAR Certified Exhaust Fan

Choose Your Features

Features include lights, night lights, decorative grilles, heaters, dual speed fans and more. Determine if you will need any of these features for your application and choose a fan accordingly.

Special Consideration

Before selecting any fan, you should consult all national and local codes to determine if any specialized requirements exist. Many municipalities have codes in place for CFM, Sones and efficiency.





ASHRAE 62.2 Basics

ASHRAE 62.2 is a minimum national standard that provides methods for achieving acceptable Indoor Air Quality (IAQ) in typical residences. The standard has four main components:

Whole Dwelling Ventilation – diluting the air in the main living spaces to remove unavoidable contaminants from people, pets, cleaning, and other household pollutants. The whole dwelling fan flow rate is determined based on the floor space and the number of bedrooms. The whole dwelling fan provides multiple air exchanges within the home each day. The operation can be continuous or intermittent (cycled by a timer) if less than 1 sone.

Local Exhaust – removing high concentrations of contaminants in the rooms where they occur (kitchens and bathrooms). The local exhaust fans can operate continuously (if less than 1 sone) at a lower flow rate (CFM), or intermittently (cycled by a switch or timer) at a higher flow rate if 3 sones or less. If operated continuously or on a timer the local exhaust fan flow reduces the whole house exhaust fan flow requirement.

Source Control – preventing or limiting the introduction of pollutants.

Outdoor Air – Bringing outdoor air into the building to replace the air being ventilated out either by natural infiltration or using a mechanical solution.

Help! What Should I Do?

Not to worry. Air King is able to provide simple, cost effective solutions without compromising performance. Air King offers multiple price point choices to meet the needs of your project including Whole House and Local Exhaust options that are HVI certified at the lowest allowable sound rating (at the threshold of hearing) so they will not disrupt day to day living. Choices are available for Fan only, Fan/Light combinations and decorative combinations. Additional strategies, tips and techniques can be found on the Air King website at www.airkinglimited.com.

Who Is ASHRAE?

ASHRAE is the American Society of Heating, Refrigerating and Air-Conditioning Engineers. ASHRAE's mission is to "serve humanity and promote a sustainable world through research, standards writing, publishing and continued education."¹ ASHRAE is the leading force when it comes to writing ventilation codes that are adopted throughout North America on both a local level and nationally.

¹ Source: www.ashrae.org



Fresh Air Supply Unit



QFAM, FAS



QUFRESH® by



The QuFRESH by Air King offers home builders and developers a cost effective mechanical outdoor air solution. Contractors and builders now have a practical offering for introducing constant fresh air from outside into the residence, meeting the outdoor air CFM requirements. The operator simply dials in the quantity (CFM) of outdoor air needed from the quiet energy efficient fan.

INSTALLATION

- Fully assembled, screw it to the wall, connect power & ductwork, you're ready to go
- Inexpensive first cost method to bring in outdoor air using an independent fan
- No connection to HVAC system required
- Compact design fits nearly everywhere
- Mount in basement, attic, equipment closet, garage, laundry room, etc.
- 6" round duct connections for virtually unlimited duct length
- Suitable for single & multi-family projects

SET UP

Dial in the desired airflow from 40 to 120 CFM, turn it on

VERIFICATION

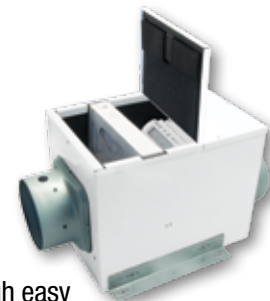
Includes easy access test port

COMPLIANT

- Component of ASHRAE 62.2 solution for outdoor air
- HVI Certified performance
- UL listed

FEATURES

- Accepts nominal 10" x 10" x 2" up to MERV 16 filter through easy access filter door (Models MF161010 - MERV 16 filter and MF61010 - MERV 6 filters available separately)
- Nearly silent operation, homeowner may not even know it is operating
- Can be used with a timer switch
- Continuous operation and Energy Savings modes
- White epoxy finish



QFAM Series Controller



CONTINUOUS OPERATION MODE:

Unit will run continuously at the established CFM level as required by ASHRAE 62.2.

ENERGY SAVINGS MODE:

Internally mounted sensors provide limits preventing the intake of outdoor air that is too humid, too hot, too cold or too dry. The operator simply dials in the quantity (CFM) of outdoor air needed from the quiet energy efficient fan and sets the desired intake levels for the outside humidity and temperature.



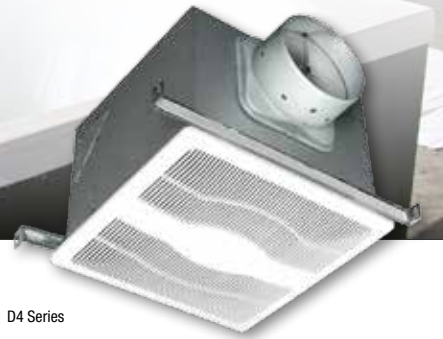
MODEL	CFM @ .2 SP	ASHRAE 62.2	CONTROLS	LISTING	DUCT SIZE	HOUSING SIZE
FRESH AIR MACHINE						
QFAM	40 - 120	Outdoor Air	Speed, Humidity, Temperature	UL	6"	14 7/8"W x 10 1/8"D x 11 1/2"H
FAS	40 - 120	Outdoor Air	Speed	UL	6"	14 7/8"W x 10 1/8"D x 11 1/2"H



DC Motor Exhaust Fans



CALGreen



D4 Series



DL4 Series

• **ENERGY STAR® Certified**

- Energy efficient DC motor maintains CFM ratings across multiple static pressures and is suitable for continuous operation
- Solution for **ASHRAE 62.2** continuous whole house ventilation
Ventilation calculation: (Total sq. ft. of home/100) + ((# of bedrooms+1) x 7.5 cfm)
 For best fan selection round the min ventilation # up to the nearest 0 - ex. 45 CFM should be rounded up to 50 CFM
- Can be used to comply with California Title 24 as well as CALGreen (humidity sensing models meet the CALGreen requirements for use in bathrooms)
- 6" Round duct connector with gasketed damper protects against backdrafts and seals the duct better than any other damper on the market today
- Listed for installation over a tub or shower on a GFCI circuit
- Hanger bar installation
- Available in contractor packs (see your local representative for details)
- **DL SERIES: INCLUDED** 8 watt 4000K LED lamp, 725 lumens (91 lumens/watt), Night light feature (4 watt maximum bulb not included)

MODEL	CFM RANGE @ .1 SP	SONES @ .1 SP	MAX. FAN WATTS	SPEEDS	LIGHTING	LISTING	DUCT SIZE	HOUSING SIZE	ENERGY STAR CERTIFIED
ECO-EXHAUST FANS									
D4S	40 - 120	<0.3 - 0.3	7.3	Single	N/A	ETL	6"	12 ⁷ / ₈ "W x 12 ³ / ₄ "D x 9 ⁷ / ₈ "H	
D4D	40 - 120	<0.3 - 0.3	7.3	Dual	N/A	ETL	6"	12 ⁷ / ₈ "W x 12 ³ / ₄ "D x 9 ⁷ / ₈ "H	
DL4S	30 - 130	<0.3 - 0.3	7.4	Single	8 W LED	ETL	6"	12 ⁷ / ₈ "W x 12 ³ / ₄ "D x 9 ⁷ / ₈ "H	
DL4D	30 - 130	<0.3 - 0.3	7.4	Dual	8 W LED	ETL	6"	12 ⁷ / ₈ "W x 12 ³ / ₄ "D x 9 ⁷ / ₈ "H	
ECO-EXHAUST FANS with MOTION SENSOR									
Integrated motion sensor detects occupancy of the room and turns the fan on (or to high speed for dual speed models) and keeps it running for the preset time after the room is vacated before automatically turning the fan off (or back to low speed). Timer can be set from 30 seconds to 80 minutes.									
D4SG	40 - 120	<0.3 - 0.3	7.3	Single	N/A	ETL	6"	12 ⁷ / ₈ "W x 12 ³ / ₄ "D x 9 ⁷ / ₈ "H	
D4DG	40 - 120	<0.3 - 0.3	7.3	Dual	N/A	ETL	6"	12 ⁷ / ₈ "W x 12 ³ / ₄ "D x 9 ⁷ / ₈ "H	
DL4SG	30 - 130	<0.3 - 0.3	7.4	Single	8 W LED	ETL	6"	12 ⁷ / ₈ "W x 12 ³ / ₄ "D x 9 ⁷ / ₈ "H	
DL4DG	30 - 130	<0.3 - 0.3	7.4	Dual	8 W LED	ETL	6"	12 ⁷ / ₈ "W x 12 ³ / ₄ "D x 9 ⁷ / ₈ "H	
ECO-EXHAUST FANS with MOTION SENSOR and HUMIDITY SENSOR									
Integrated motion sensor detects occupancy of the room and turns the fan to high speed and keeps it running for the preset time after the room is vacated before automatically turning the fan back to low speed. Timer can be set from 30 seconds to 80 minutes. Integrated humidistat senses the humidity level of the room and turns the fan to high speed until the humidity level is below the preset level. Can be set up to 80% RH. The fan can also be activated through a wall control switch.									
D4SGH	40 - 120	<0.3 - 0.3	7.3	Single	N/A	ETL	6"	12 ⁷ / ₈ "W x 12 ³ / ₄ "D x 9 ⁷ / ₈ "H	
D4DGH	40 - 120	<0.3 - 0.3	7.3	Dual	N/A	ETL	6"	12 ⁷ / ₈ "W x 12 ³ / ₄ "D x 9 ⁷ / ₈ "H	
DL4SGH	30 - 130	<0.3 - 0.3	7.4	Single	8 W LED	ETL	6"	12 ⁷ / ₈ "W x 12 ³ / ₄ "D x 9 ⁷ / ₈ "H	
DL4DGH	30 - 130	<0.3 - 0.3	7.4	Dual	8 W LED	ETL	6"	12 ⁷ / ₈ "W x 12 ³ / ₄ "D x 9 ⁷ / ₈ "H	
ECO-EXHAUST FANS with HUMIDITY SENSOR									
Integrated humidistat senses the humidity level of the room and turns the fan to high speed until the humidity level is below the preset level. Can be set up to 80% RH. The fan can also be activated through a wall control switch.									
D4SH	40 - 120	<0.3 - 0.3	7.3	Single	N/A	ETL	6"	12 ⁷ / ₈ "W x 12 ³ / ₄ "D x 9 ⁷ / ₈ "H	
D4DH	40 - 120	<0.3 - 0.3	7.3	Dual	N/A	ETL	6"	12 ⁷ / ₈ "W x 12 ³ / ₄ "D x 9 ⁷ / ₈ "H	
DL4SH	30 - 130	<0.3 - 0.3	7.4	Single	8 W LED	ETL	6"	12 ⁷ / ₈ "W x 12 ³ / ₄ "D x 9 ⁷ / ₈ "H	
DL4DH	30 - 130	<0.3 - 0.3	7.4	Dual	8 W LED	ETL	6"	12 ⁷ / ₈ "W x 12 ³ / ₄ "D x 9 ⁷ / ₈ "H	



ECO-Exhaust Fans



E and EH Series



EG and EGH Series



- **ENERGY STAR® Certified**

- Solution for **ASHRAE 62.2** continuous whole house ventilation

Ventilation calculation: (Total sq. ft. of home/100) + ((# of bedrooms+1) x 7.5 cfm)

For best fan selection round the min ventilation # up to the nearest 0 - ex. 45 CFM should be rounded up to 50 CFM

- Boost speed provides extra ventilation for installation with higher static pressure and ensures airflow requirements are met when used to comply with ASHRAE 62.2
- Can be used to comply with California Title 24 as well as CALGreen (humidity sensing models meet the CALGreen requirements for use in bathrooms)
- 6" Round duct connector with gasketed damper protects against backdrafts and seals the duct better than any other damper on the market today
- Listed for installation over a tub or shower on a GFCI circuit
- Hanger bar installation
- Available in contractor packs (see your local representative for details)

MODEL	CFM @ .1 SP	CFM @ .25 SP	SONES @ .1 SP	MAX. FAN WATTS	LIGHTING	LISTING	DUCT SIZE	HOUSING SIZE
ECO-EXHAUST FANS								
E80S	80	84 ¹	<0.3 ¹	37.0	N/A	ETL	6"	12 ³ / ₈ "W x 12 ³ / ₄ "D x 9 ⁵ / ₈ "H
E80D	80/30	84 ¹	<0.3 ¹	37.0	N/A	ETL	6"	12 ³ / ₈ "W x 12 ³ / ₄ "D x 9 ⁵ / ₈ "H
E110S	110	111 ²	<0.3 ²	37.0	N/A	ETL	6"	12 ³ / ₈ "W x 12 ³ / ₄ "D x 9 ⁵ / ₈ "H
E110D	110/50	111 ²	<0.3 ²	37.0	N/A	ETL	6"	12 ³ / ₈ "W x 12 ³ / ₄ "D x 9 ⁵ / ₈ "H
E130S	130	113 ³	<0.3 ³	37.0	N/A	ETL	6"	12 ³ / ₈ "W x 12 ³ / ₄ "D x 9 ⁵ / ₈ "H
E130D	130/50	113 ³	<0.3 ³	37.0	N/A	ETL	6"	12 ³ / ₈ "W x 12 ³ / ₄ "D x 9 ⁵ / ₈ "H
ECO-EXHAUST FANS with MOTION SENSOR								
Integrated motion sensor detects occupancy of the room and turns the fan on (or to high speed for dual speed models) and keeps it running for the preset time after the room is vacated before automatically turning the fan off (or back to low speed). Timer can be set from 30 seconds to 80 minutes.								
E80SG	80	84 ¹	<0.3 ¹	37.0	N/A	ETL	6"	12 ³ / ₈ "W x 12 ³ / ₄ "D x 9 ⁵ / ₈ "H
E80DG	80/30	84 ¹	<0.3 ¹	37.0	N/A	ETL	6"	12 ³ / ₈ "W x 12 ³ / ₄ "D x 9 ⁵ / ₈ "H
E130SG	130	113 ³	<0.3 ³	37.0	N/A	ETL	6"	12 ³ / ₈ "W x 12 ³ / ₄ "D x 9 ⁵ / ₈ "H
E130DG	130/50	113 ³	<0.3 ³	37.0	N/A	ETL	6"	12 ³ / ₈ "W x 12 ³ / ₄ "D x 9 ⁵ / ₈ "H
ECO-EXHAUST FANS with MOTION SENSOR and HUMIDITY SENSOR								
Integrated motion sensor detects occupancy of the room and turns the fan on (or to high speed for dual speed models) and keeps it running for the preset time after the room is vacated before automatically turning the fan off (or back to low speed). Timer can be set from 30 seconds to 80 minutes. Integrated humidistat senses the humidity level of the room and turns the fan on (or to high speed for dual speed models) until the humidity level is below the preset level. Can be set up to 80% RH. The fan can also be activated through a wall control switch.								
E80SGH	80	84 ¹	<0.3 ¹	37.0	N/A	ETL	6"	12 ³ / ₈ "W x 12 ³ / ₄ "D x 9 ⁵ / ₈ "H
E80DGH	80/30	84 ¹	<0.3 ¹	37.0	N/A	ETL	6"	12 ³ / ₈ "W x 12 ³ / ₄ "D x 9 ⁵ / ₈ "H
E130SGH	130	113 ³	<0.3 ³	37.0	N/A	ETL	6"	12 ³ / ₈ "W x 12 ³ / ₄ "D x 9 ⁵ / ₈ "H
E130DGH	130/50	113 ³	<0.3 ³	37.0	N/A	ETL	6"	12 ³ / ₈ "W x 12 ³ / ₄ "D x 9 ⁵ / ₈ "H
ECO-EXHAUST FANS with HUMIDITY SENSOR								
Integrated humidistat senses the humidity level of the room and turns the fan on (or to high speed for dual speed models) until the humidity level is below the preset level. Can be set up to 80% RH. The fan can also be activated through a wall control switch.								
E80SH	80	84 ¹	<0.3 ¹	37.0	N/A	ETL	6"	12 ³ / ₈ "W x 12 ³ / ₄ "D x 9 ⁵ / ₈ "H
E80DH	80/30	84 ¹	<0.3 ¹	37.0	N/A	ETL	6"	12 ³ / ₈ "W x 12 ³ / ₄ "D x 9 ⁵ / ₈ "H
E130SH	130	113 ³	<0.3 ³	37.0	N/A	ETL	6"	12 ³ / ₈ "W x 12 ³ / ₄ "D x 9 ⁵ / ₈ "H
E130DH	130/50	113 ³	<0.3 ³	37.0	N/A	ETL	6"	12 ³ / ₈ "W x 12 ³ / ₄ "D x 9 ⁵ / ₈ "H

¹ Boost speed provides 84 CFM @ .25 Static Pressure, 0.7 sones • ² Boost speed provides 111 CFM @ .25 Static Pressure, 0.6 sones

³ Boost speed provides 113 CFM @ .25 Static Pressure, 0.7 sones



ECO-Exhaust Fans with Light



CALGreen



EL and ELH Series



ELG and ELGH Series

- ENERGY STAR® Certified

- Solution for ASHRAE 62.2 continuous whole house ventilation

Ventilation calculation: (Total sq. ft. of home/100) + ((# of bedrooms+1) x 7.5 cfm)
For best fan selection round the min ventilation # up to the nearest 0 - ex. 45 CFM should be rounded up to 50 CFM

- Boost speed provides extra ventilation for installation with higher static pressure and ensures airflow requirements are met when used to comply with ASHRAE 62.2
- Can be used to comply with California Title 24 as well as CALGreen (humidity sensing models meet the CALGreen requirements for use in bathrooms)
- INCLUDED** 8 watt 4000K LED lamp, 725 lumens (91 lumens/watt)
- Night light feature (4 watt maximum bulb not included)
- 6" Round duct connector with gasketed damper protects against backdrafts and seals the duct better than any other damper on the market today
- Listed for installation over a tub or shower on a GFCI circuit
- Hanger bar installation
- Available in contractor packs (see your local representative for details)

MODEL	CFM @ .1 SP	CFM @ .25 SP	SONES @ .1 SP	MAX. FAN WATTS	LIGHTING	LISTING	DUCT SIZE	HOUSING SIZE
ECO-EXHAUST FANS with LIGHT								
EL80S	80	82 ¹	<0.3 ¹	37.0	8 W LED	ETL	6"	12 ⁷ / ₈ "W x 12 ³ / ₄ "D x 9 ⁷ / ₈ "H
EL80D	80/30	82 ¹	<0.3 ¹	37.0	8 W LED	ETL	6"	12 ⁷ / ₈ "W x 12 ³ / ₄ "D x 9 ⁷ / ₈ "H
EL130S	130	112 ⁴	<0.3 ⁴	37.0	8 W LED	ETL	6"	12 ⁷ / ₈ "W x 12 ³ / ₄ "D x 9 ⁷ / ₈ "H
EL130D	130/50	112 ⁴	<0.3 ⁴	37.0	8 W LED	ETL	6"	12 ⁷ / ₈ "W x 12 ³ / ₄ "D x 9 ⁷ / ₈ "H
ECO-EXHAUST FANS with MOTION SENSOR and LIGHT								
Integrated motion sensor detects occupancy of the room and turns the fan on (or to high speed for dual speed models) and keeps it running for the preset time after the room is vacated before automatically turning the fan off (or back to low speed). Timer can be set from 30 seconds to 80 minutes.								
EL80SG	80	82 ¹	<0.3 ¹	37.0	8 W LED	ETL	6"	12 ⁷ / ₈ "W x 12 ³ / ₄ "D x 9 ⁷ / ₈ "H
EL80DG	80/30	82 ¹	<0.3 ¹	37.0	8 W LED	ETL	6"	12 ⁷ / ₈ "W x 12 ³ / ₄ "D x 9 ⁷ / ₈ "H
EL130SG	130	112 ⁴	<0.3 ⁴	37.0	8 W LED	ETL	6"	12 ⁷ / ₈ "W x 12 ³ / ₄ "D x 9 ⁷ / ₈ "H
EL130DG	130/50	112 ⁴	<0.3 ⁴	37.0	8 W LED	ETL	6"	12 ⁷ / ₈ "W x 12 ³ / ₄ "D x 9 ⁷ / ₈ "H
ECO-EXHAUST FANS with MOTION SENSOR, HUMIDITY SENSOR and LIGHT								
Integrated motion sensor detects occupancy of the room and turns the fan on (or to high speed for dual speed models) and keeps it running for the preset time after the room is vacated before automatically turning the fan off (or back to low speed). Timer can be set from 30 seconds to 80 minutes. Integrated humidistat senses the humidity level of the room and turns the fan on (or to high speed for dual speed models) until the humidity level is below the preset level. The fan can also be activated through a wall control switch.								
EL80SGH	80	82 ¹	<0.3 ¹	37.0	8 W LED	ETL	6"	12 ⁷ / ₈ "W x 12 ³ / ₄ "D x 9 ⁷ / ₈ "H
EL80DGH	80/30	82 ¹	<0.3 ¹	37.0	8 W LED	ETL	6"	12 ⁷ / ₈ "W x 12 ³ / ₄ "D x 9 ⁷ / ₈ "H
EL130SGH	130	112 ⁴	<0.3 ⁴	37.0	8 W LED	ETL	6"	12 ⁷ / ₈ "W x 12 ³ / ₄ "D x 9 ⁷ / ₈ "H
EL130DGH	130/50	112 ⁴	<0.3 ⁴	37.0	8 W LED	ETL	6"	12 ⁷ / ₈ "W x 12 ³ / ₄ "D x 9 ⁷ / ₈ "H
ECO-EXHAUST FANS with HUMIDITY SENSOR and LIGHT								
Integrated humidistat senses the humidity level of the room and turns the fan on (or to high speed for dual speed models) until the humidity level is below the preset level. Can be set up to 80% RH. The fan can also be activated through a wall control switch.								
EL80SH	80	82 ¹	<0.3 ¹	37.0	8 W LED	ETL	6"	12 ⁷ / ₈ "W x 12 ³ / ₄ "D x 9 ⁷ / ₈ "H
EL80DH	80/30	82 ¹	<0.3 ¹	37.0	8 W LED	ETL	6"	12 ⁷ / ₈ "W x 12 ³ / ₄ "D x 9 ⁷ / ₈ "H
EL130SH	130	112 ⁴	<0.3 ⁴	37.0	8 W LED	ETL	6"	12 ⁷ / ₈ "W x 12 ³ / ₄ "D x 9 ⁷ / ₈ "H
EL130DH	130/50	112 ⁴	<0.3 ⁴	37.0	8 W LED	ETL	6"	12 ⁷ / ₈ "W x 12 ³ / ₄ "D x 9 ⁷ / ₈ "H

¹ Boost speed provides 84 CFM @ .25 Static Pressure, 0.6 sones • ⁴ Boost speed provides 112 CFM @ .25 Static Pressure, 0.6 sones



Variable Speed Exhaust Fans



EVD and EVDH



EVFD and EVFDH



- **ENERGY STAR® Certified**

- Solution for **ASHRAE 62.2** continuous whole house ventilation

Ventilation calculation: (Total sq. ft. of home/100) + (# of bedrooms+1) x 7.5 cfm

For best fan selection round the min ventilation # up to the nearest 0 - ex. 45 CFM should be rounded up to 50 CFM

- Can be used to comply with California Title 24 as well as CALGreen (humidity sensing models meet the CALGreen requirements for use in bathrooms)
- 8 capacity settings on low speed allow the fan to be set to the required exhaust rate for continuous ventilation. Low speed set points include: 30, 40, 50, 60, 70, 90, 100 and 120 CFM
- High speed rapidly clears the air of moisture, odors or other contaminants. High speed set points include: 80, 110, 130 and Boost
- Boost speed provides extra ventilation for installation with higher static pressure and ensures airflow requirements are met when used to comply with ASHRAE 62.2
- 6" Round duct connector with gasketed damper protects against backdrafts and seals the duct better than any other damper on the market today
- Listed for installation over a tub or shower on a GFCI circuit
- Hanger bar installation
- Available in contractor packs (see your local representative for details)
- **EVL SERIES: INCLUDED** 8 watt 4000K LED lamp, 725 lumens (91 lumens/watt), Night light feature (4 watt maximum bulb not included)

MODEL	CFM RANGE @ .1 SP	BOOST SPEED	SONES @ .1 SP	MAX. FAN WATTS	LIGHTING	LISTING	DUCT SIZE	HOUSING SIZE
ECO-EXHAUST FANS								
EVD	30 - 150	150 @ 0.6 Sones ³	<0.3 ³	37.0	N/A	ETL	6"	12 ⁷ / ₈ "W x 12 ³ / ₄ "D x 9 ⁷ / ₈ "H
EVL	30 - 150	150 @ 0.6 Sones ⁴	<0.3 ⁴	37.0	8 W LED	ETL	6"	12 ⁷ / ₈ "W x 12 ³ / ₄ "D x 9 ⁷ / ₈ "H
ECO-EXHAUST FANS with MOTION SENSOR								
Integrated motion sensor detects occupancy of the room and turns the fan to high speed and keeps it running for the preset time after the room is vacated before automatically turning the fan back to low speed. Timer can be set from 30 seconds to 80 minutes.								
EVDG	30 - 150	150 @ 0.6 Sones ³	<0.3 ³	37.0	N/A	ETL	6"	12 ⁷ / ₈ "W x 12 ³ / ₄ "D x 9 ⁷ / ₈ "H
EVLG	30 - 150	150 @ 0.6 Sones ⁴	<0.3 ⁴	37.0	8 W LED	ETL	6"	12 ⁷ / ₈ "W x 12 ³ / ₄ "D x 9 ⁷ / ₈ "H
ECO-EXHAUST FANS with MOTION SENSOR and HUMIDITY SENSOR								
Integrated motion sensor detects occupancy of the room and turns the fan to high speed and keeps it running for the preset time after the room is vacated before automatically turning the fan back to low speed. Timer can be set from 30 seconds to 80 minutes. Integrated humidistat senses the humidity level of the room and turns the fan to high speed until the humidity level is below the preset level. Can be set up to 80% RH. The fan can also be activated through a wall control switch.								
EVDGH	30 - 150	150 @ 0.6 Sones ³	<0.3 ³	37.0	N/A	ETL	6"	12 ⁷ / ₈ "W x 12 ³ / ₄ "D x 9 ⁷ / ₈ "H
EVLGH	30 - 150	150 @ 0.6 Sones ⁴	<0.3 ⁴	37.0	8 W LED	ETL	6"	12 ⁷ / ₈ "W x 12 ³ / ₄ "D x 9 ⁷ / ₈ "H
ECO-EXHAUST FANS with HUMIDITY SENSOR								
Integrated humidistat senses the humidity level of the room and turns the fan to high speed until the humidity level is below the preset level. Can be set up to 80% RH. The fan can also be activated through a wall control switch.								
EVDH	30 - 150	150 @ 0.6 Sones ³	<0.3 ³	37.0	N/A	ETL	6"	12 ⁷ / ₈ "W x 12 ³ / ₄ "D x 9 ⁷ / ₈ "H
EVLH	30 - 150	150 @ 0.6 Sones ⁴	<0.3 ⁴	37.0	8 W LED	ETL	6"	12 ⁷ / ₈ "W x 12 ³ / ₄ "D x 9 ⁷ / ₈ "H

³ Boost speed provides 113 CFM @ .25 Static Pressure, 0.6 sones • ⁴ Boost speed provides 112 CFM @ .25 Static Pressure, 0.6 sones



Quiet Exhaust Fans



AK150LS, AK200LS, AK280LS

AKLS6 and AKLS6H Series

AKLS Series

AK and AKH Series

BFC90 Series

NEW LEDAK SERIES!



- **ENERGY STAR® Certified**
- Solutions for **ASHRAE 62.2** continuous whole house ventilation or local ventilation (models with a sone rating of 1.0 or below can be used for whole house ventilation)
- Can be used to comply with California Title 24 as well as CALGreen (humidity sensing models meet the CALGreen requirements for use in bathrooms)
- Round duct connector with damper protects against backdrafts
- Listed for installation over a tub or shower on a GFCI circuit
- Hanger bar installation
- Select models available in contractor packs (see page 21 for details)
- **LEDAK SERIES:** Moonstone glass light lens with **INCLUDED** 6 watt 4000K LED lamp, 525 lumens (88 lumens/watt). Night light feature (4 watt maximum bulb not included)

MODEL	CFM @ .1 SP	CFM @ .25 SP	SONES @ .1 SP	MAX. FAN WATTS	LIGHTING	LISTING	DUCT SIZE	HOUSING SIZE
QUIET EXHAUST FANS								
AK80LS6	80	57	0.5	25.2	N/A	UL	6"	10 ⁷ / ₈ "W x 9 ⁹ / ₈ "D x 7 ⁷ / ₈ "H
AK90LS6	90	65	0.8	25.7	N/A	UL	6"	10 ⁷ / ₈ "W x 9 ⁹ / ₈ "D x 7 ⁷ / ₈ "H
AK100LS6	100	78	1.0	26.6	N/A	UL	6"	10 ⁷ / ₈ "W x 9 ⁹ / ₈ "D x 7 ⁷ / ₈ "H
AK110LS6	110	99	1.4	29.0	N/A	UL	6"	10 ⁷ / ₈ "W x 9 ⁹ / ₈ "D x 7 ⁷ / ₈ "H
AK150LS	150	116	0.8	37.0	N/A	ETL	6"	10 ⁷ / ₈ "W x 9 ⁹ / ₈ "D x 7 ⁷ / ₈ "H
AK150D	150 / 80	113	0.6 / 0.3	37.0	N/A	ETL	6"	10 ⁷ / ₈ "W x 9 ⁹ / ₈ "D x 7 ⁷ / ₈ "H
AK200LS	200	183	1.2	57.0	N/A	UL	6"	10 ⁷ / ₈ "W x 9 ⁹ / ₈ "D x 7 ⁷ / ₈ "H
AK280LS	280	257	3.0	65.7	N/A	UL	6"	10 ⁷ / ₈ "W x 9 ⁹ / ₈ "D x 7 ⁷ / ₈ "H
AK80LS	80	61	0.7	19.7	N/A	UL	4"	10 ⁷ / ₈ "W x 9 ⁹ / ₈ "D x 7 ⁷ / ₈ "H
AK110LS	110	90	1.5	28.5	N/A	UL	4"	10 ⁷ / ₈ "W x 9 ⁹ / ₈ "D x 7 ⁷ / ₈ "H
AK80LS-1	80	68	1.0	28.1	N/A	UL	4"	10 ⁷ / ₈ "W x 9 ⁹ / ₈ "D x 7 ⁷ / ₈ "H
AK50S	50	40	0.5	14.5	N/A	UL	4"	10 ⁷ / ₈ "W x 9 ⁹ / ₈ "D x 7 ⁷ / ₈ "H
LEDAK50	50	35	0.3	16.0	6 W LED	UL	4"	10 ⁷ / ₈ "W x 9 ⁹ / ₈ "D x 7 ⁷ / ₈ "H
AK80	80	63	1.5	27.6	N/A	UL	4"	10 ⁷ / ₈ "W x 9 ⁹ / ₈ "D x 7 ⁷ / ₈ "H
LEDAK80	80	70	1.0	27.6	6 W LED	UL	4"	10 ⁷ / ₈ "W x 9 ⁹ / ₈ "D x 7 ⁷ / ₈ "H
AK90	90	75	1.5	25.4	N/A	UL	4"	10 ⁷ / ₈ "W x 9 ⁹ / ₈ "D x 7 ⁷ / ₈ "H
BFC90	90	75	1.0	19.0	N/A	ETL	4"	9"W x 9"D x 7 ⁷ / ₈ "H
AK110PN	100	83	2.0	26.4	N/A	UL	4"	10 ⁷ / ₈ "W x 9 ⁹ / ₈ "D x 7 ⁷ / ₈ "H
AK100D	100 / 50	83	2.0 / 0.4	26.4	N/A	UL	4"	10 ⁷ / ₈ "W x 9 ⁹ / ₈ "D x 7 ⁷ / ₈ "H
LEDAK100	100	83	2.0	26.5	6 W LED	UL	4"	10 ⁷ / ₈ "W x 9 ⁹ / ₈ "D x 7 ⁷ / ₈ "H
LEDAK100D	100 / 50	83	2.0 / 0.4	26.5	6 W LED	UL	4"	10 ⁷ / ₈ "W x 9 ⁹ / ₈ "D x 7 ⁷ / ₈ "H

QUIET EXHAUST FANS with HUMIDITY SENSOR
 Integrated humidistat senses the humidity level of the room and turns the fan on (or to high speed for dual speed models) until the humidity level is below the preset level. Can be set up to 80% RH. The fan can also be activated through a wall control switch.

AK80H	80	68	1.0	28.1	N/A	UL	4"	10 ⁷ / ₈ "W x 9 ⁹ / ₈ "D x 7 ⁷ / ₈ "H
LEDAK80H	80	70	1.0	27.6	6 W LED	UL	4"	10 ⁷ / ₈ "W x 9 ⁹ / ₈ "D x 7 ⁷ / ₈ "H
BFC90H	90	75	1.0	19.0	N/A	ETL	4"	9"W x 9"D x 7 ⁷ / ₈ "H
AK100H	100	83	2.0	26.4	N/A	UL	4"	10 ⁷ / ₈ "W x 9 ⁹ / ₈ "D x 7 ⁷ / ₈ "H
AK100DH	100 / 50	83	2.0 / 0.4	26.4	N/A	UL	4"	10 ⁷ / ₈ "W x 9 ⁹ / ₈ "D x 7 ⁷ / ₈ "H
LEDAK100H	100	83	2.0	26.5	6 W LED	UL	4"	10 ⁷ / ₈ "W x 9 ⁹ / ₈ "D x 7 ⁷ / ₈ "H
LED100DH	100 / 50	83	2.0 / 0.4	26.5	6 W LED	UL	4"	10 ⁷ / ₈ "W x 9 ⁹ / ₈ "D x 7 ⁷ / ₈ "H
AK80LS6H	80	57	0.5	25.2	N/A	UL	6"	10 ⁷ / ₈ "W x 9 ⁹ / ₈ "D x 7 ⁷ / ₈ "H
AK100LS6H	100	78	1.0	26.6	N/A	UL	6"	10 ⁷ / ₈ "W x 9 ⁹ / ₈ "D x 7 ⁷ / ₈ "H
AK150DH	150 / 80	113	0.6 / 0.3	37.0	N/A	ETL	6"	10 ⁷ / ₈ "W x 9 ⁹ / ₈ "D x 7 ⁷ / ₈ "H

SNAP-IN Exhaust Fans



BFQ Series

- **ENERGY STAR® Certified**

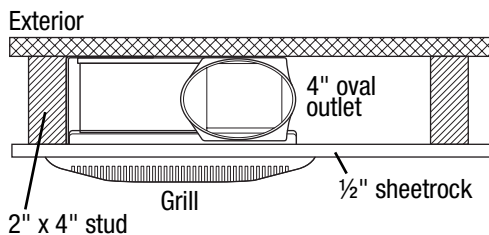
- Solutions for **ASHRAE 62.2** continuous whole house ventilation or local ventilation (models with a sone rating of 1.0 or below can be used for whole house ventilation)
- Can be used to comply with California Title 24 as well as CALGreen
- 4" Round duct connector with damper protects against backdrafts
- UL Listed high-impact plastic housing will not rust or corrode over time and is listed for installation over a tub or shower on a GFCI circuit
- Installs using the included SNAP-IN mounting system with wire nuts and a romex connector included and can be wall mounted in 2" x 6" construction
- Available in contractor packs (see page 21 for details)
- See page 15 for additional higher volume models
- **BFQL SERIES: INCLUDED** 6 watt 4000K LED lamp, 525 lumens (88 lumens/watt)



BFQF Series



BFQW Series



BFQW SERIES can be wall mounted into standard 2" x 4" studs.



SNAP-IN INSTALLATION



NAIL the included bracket in place.

SNAP the naturally sound absorbent molded plastic housing into the bracket.

WIRE the fan with the included wire nuts and strain relief. Attach the ducting and **YOU'RE DONE!**

MODEL	CFM @ .1 SP	CFM @ .25 SP	SONES @ .1 SP	MAX. FAN WATTS	LIGHTING	LISTING	DUCT SIZE	HOUSING SIZE
SNAP-IN EXHAUST FAN								
BFQ50	50	36	0.6	17.4	N/A	UL	4"	9 1/8"W x 8 1/2"D x 4 3/4"H
BFQL50	50	39	0.8	17.8	6 W LED	UL	4"	9 1/8"W x 8 1/2"D x 4 3/4"H
BFQ75	70	55	1.5	23.5	N/A	UL	4"	9 1/8"W x 8 1/2"D x 4 3/4"H
BFQL70	70	58	2.0	22.6	6 W LED	UL	4"	9 1/8"W x 8 1/2"D x 4 3/4"H
SNAP-IN EXHAUST FAN with OVAL DUCT CONNECTION								
Can be wall mounted into standard 2" x 4" studs. Standard 4" round ducting can be formed to fit over oval duct connector.								
BFQ50W	50	39	0.7	13.5	N/A	UL	4"	9 1/8"W x 8 1/2"D x 3 7/8"H
BFQ70W	70	56	1.5	22.3	N/A	UL	4"	9 1/8"W x 8 1/2"D x 3 7/8"H



Exhaust Fans with Light



AK100L

Deluxe Series with Light (AK100L)

- Moonstone glass light lens disperses the light evenly throughout the room
- Utilizes up to a 100W medium base bulb or an equivalent energy efficient type bulb, 7 watt night-light feature*
- Plastic damper protects against backdrafts and ensures quiet operation
- Easily installs using the included adjustable hanging brackets

Economical Series with Light (ASLC)

- Utilizes up to a 100W medium base bulb or an equivalent energy efficient type bulb
- Plastic damper protects against backdrafts and ensures quiet operation
- Easily installs using the double thick keyhole mounting tabs or the included hanging brackets
- Available in contractor packs (see page 21 for details)



ASLC Series

MODEL	CFM @ .1 SP	SONES @ .1 SP	ASHRAE 62.2	LIGHTING	LISTING	DUCT SIZE	HOUSING SIZE
DELUXE EXHAUST FAN with LIGHT (AK100L)							
AK100L	100	2.5	Local	100W or equivalent, 7W night light	UL	4"	9 7/8"W x 10 7/8"D x 7 7/8"H
ECONOMICAL EXHAUST FAN with LIGHT (AS Series)							
ASLC50	50	3.0	Local	100W or equivalent	UL	4"	7 3/8"W x 7 3/8"D x 5 7/8"H
ASLC70	70	4.0	-	100W or equivalent	UL	4"	7 3/8"W x 7 3/8"D x 5 7/8"H
ASLC90	90	2.5	Local	100W or equivalent	UL	4"	9 1/8"W x 9"D x 5 7/8"H
ASLC120	120	4.0	-	100W or equivalent	UL	4"	9 1/8"W x 9"D x 5 7/8"H

* Bulbs not included



Decorative Exhaust Fans with Light



Model AKLC701



Model AKLC702



Model AKLC703



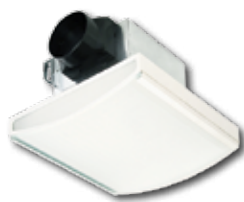
Model DRLC701



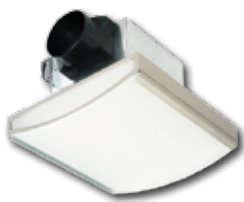
Model DRLC702



Model DRLC703



Model AKLC70SLW



Model AKLC70SLN



Model AKLC70DW



Model AKLC70DRSB



Model AKLC70RCB



Model AKLC70SNS

- Decorative grills and light lenses enhance the decor of your bathroom
- Glass light lens disperses light throughout the room (model AKLC70RCB features a plastic light lens)
- 4" round duct collar with plastic damper protects against backdrafts and ensures quiet operation
- Exhaust fan and lighting can be wired to operate separately
- Easily installs using the included adjustable hanging brackets

Models AKLC701, AKLC702, AKLC703, DRLC701, DRLC702, DRLC703:

13½" diameter round grill makes unit easier to visually center within the room
Utilizes up to 2 - 60W medium base bulbs or equivalent energy efficient type bulbs

Models AKLC70SLN, AKLC70SLW:

Utilizes 2 up to 60W medium base bulbs or equivalent energy efficient type bulbs

Models AKLC70DW, AKLC70SNS:

Utilizes 2 up to 60W medium base bulbs or equivalent energy efficient type bulbs

Models AKLC70RCB:

Utilizes up to a 60W medium base bulb or an equivalent energy efficient type bulb

Models AKLC70DRSB:

Utilizes 3 up to 60W medium base bulbs or equivalent energy efficient type bulbs

MODEL	FINISH	CFM @ .1 SP	SONES @ .1 SP	ASHRAE 62.2	LIGHTING	LISTING	DUCT SIZE	HOUSING SIZE
DECORATIVE QUIET ROUND EXHAUST FANS with LIGHT								
AKLC701	Oil Rubbed Bronze	70	2.5	Local	2 - 60W or equivalent	UL	4"	7¾"W x 7¾"D x 5½"H
AKLC702	Nickel	70	2.5	Local	2 - 60W or equivalent	UL	4"	7¾"W x 7¾"D x 5½"H
AKLC703	White	70	2.5	Local	2 - 60W or equivalent	UL	4"	7¾"W x 7¾"D x 5½"H
DECORATIVE QUIET EXHAUST FANS with LIGHT								
AKLC70SLN	Nickel	70	2.5	Local	2 - 60W or equivalent	UL	4"	7¾"W x 7¾"D x 5½"H
AKLC70SLW	White	70	2.5	Local	2 - 60W or equivalent	UL	4"	7¾"W x 7¾"D x 5½"H
AKLC70DW	White	70	2.5	Local	2 - 60W or equivalent	UL	4"	7¾"W x 7¾"D x 5½"H
AKLC70RCB	Chrome	70	2.5	Local	60W or equivalent	UL	4"	7¾"W x 7¾"D x 5½"H
AKLC70DRSB	Black	70	2.5	Local	3 - 60W or equivalent	UL	4"	7¾"W x 7¾"D x 5½"H
AKLC70SNS	Nickel	70	2.5	Local	2 - 60W or equivalent	UL	4"	7¾"W x 7¾"D x 5½"H
DECORATIVE ROUND EXHAUST FANS with LIGHT								
DRLC701	Oil Rubbed Bronze	70	4.0	-	2 - 60W or equivalent	UL	4"	7¾"W x 7¾"D x 5½"H
DRLC702	Nickel	70	4.0	-	2 - 60W or equivalent	UL	4"	7¾"W x 7¾"D x 5½"H
DRLC703	White	70	4.0	-	2 - 60W or equivalent	UL	4"	7¾"W x 7¾"D x 5½"H

* Bulbs not included





SNAP-IN Series (BFQ)

- 4" Round duct connector with damper protects against backdrafts
- UL Listed high impact plastic housing will not rust or corrode over time and is listed for installation over a tub or shower on a GFCI circuit
- Installs using the included SNAP-IN mounting system with wire nuts and a romex connector included and can be wall mounted in 2" x 6" construction
- Available in contractor packs (see page 21 for details)

BFQ Series



Economical Series (AS)

- Plastic damper protects against backdrafts and ensures quiet operation
- Easily installs using the double thick keyhole mounting tabs
- Available in contractor packs (see page 21 for details)



AS54

Garage/Through the Wall Exhaust Fan (EWF-180)

- Spring loaded aluminum back draft damper prevents backdrafts
- 8" round diameter housing for maximum air flow can be installed into walls 4" to 9" thick
- Direct to outdoors exhaust design eliminates the need for ducting



AS Series



EWF-180

MODEL	CFM @ .1 SP	SONES @ .1 SP	ASHRAE 62.2	LIGHTING	LISTING	DUCT SIZE	HOUSING SIZE
SNAP-IN EXHAUST FAN (BFQ Series)							
BFQ80	80	2.0	Local	N/A	UL	4"	9 ¹ / ₈ "W x 8 ¹ / ₂ "D x 4 ³ / ₄ "H
BFQ90	90	2.5	Local	N/A	UL	4"	9 ¹ / ₈ "W x 8 ¹ / ₂ "D x 4 ³ / ₄ "H
BFQ110	100	3.5	-	N/A	UL	4"	9 ¹ / ₈ "W x 8 ¹ / ₂ "D x 4 ³ / ₄ "H
BFQ140	120	4.0	-	N/A	UL	4"	9 ¹ / ₈ "W x 8 ¹ / ₂ "D x 4 ³ / ₄ "H
ECONOMICAL EXHAUST FAN (AS Series)							
AS54	50	3.0	Local	N/A	UL	4"	7 ¹ / ₄ "W x 7 ¹ / ₄ "D x 4 ³ / ₄ "H
AS50	50	3.0	-	N/A	UL	3"	7 ¹ / ₄ "W x 7 ¹ / ₄ "D x 3 ³ / ₄ "H
AS70	70	4.0	-	N/A	UL	3"	7 ¹ / ₄ "W x 7 ¹ / ₄ "D x 3 ³ / ₄ "H
GARAGE/WALL EXHAUST FAN (EWF-180)							
EWF-180	180 ⁵	6.5 ⁵	-	N/A	UL	8"	14 ¹ / ₄ "W x 4 ⁵ / ₈ "-9 ¹ / ₂ "D x 14 ¹ / ₄ "H

⁵ Measured at 0.03 Static Pressure



High Volume Exhaust Fans



AK Series

High Volume Series

- 4½" x 18½" duct connector with 2 aluminum backdraft dampers
- Painted white, metal grill
- Insulated housing with motors & blowers mounted on vibration isolators
- 24" on center joists mounting using the supplied mounting angles or hung for suspended ceilings using 1/4-20 support rod
- Can be adapted for top discharge mounting, straight through inline or right angle inline (hardware not provided)
- Uses forward curved non overloading polymeric blower wheels
- Wiring access from top or side
- Easy service access through large removable access panel or through the grill



Air King model OA10V transitions the 4½" x 18½" duct collar to 10" round (available separately)



MODEL	CFM @ .1 SP	SONES @ .1 SP	ASHRAE 62.2	GRILL	LISTING	DUCT SIZE	HOUSING SIZE
HIGH VOLUME EXHAUST FAN							
AK400	420	1.5	Local	Metal	ETL	4½" x 18½"	21½"W x 12¾"D x 12¾"H
AK500	520	2.5	Local	Metal	ETL	4½" x 18½"	21½"W x 12¾"D x 12¾"H
AK600	620	3.5	-	Metal	ETL	4½" x 18½"	21½"W x 12¾"D x 12¾"H



AK55L, AK965L,
AK964

AK917

AK927



Ceramic Heater Element

The ceramic heating element produces heat by passing current through a self regulating ceramic heating element. The element adjusts itself to the surface temperature, regulating it to produce a constant heat. As air is passed through the element, it will adjust to maintain the temperature.

Combination Ceramic Heaters (Heat/Light/Vent)

- Self-regulating ceramic heating element provides 1,350 watts of safe ceramic warmth
- Able to be installed on a 15 amp circuit
- Utilizes up to a 100W medium base bulb or an equivalent energy efficient type bulb

Deluxe Combination Heaters (Heat/Light/Night Light/Vent)

- Control switches are included with the unit
- Utilizes up to a 100W medium base bulb or an equivalent energy efficient type bulb
- Easily installs using the included adjustable hanging brackets

Combination Heaters (Heat/Light/Vent)

- Utilizes up to a 100W medium base bulb or an equivalent energy efficient type bulb
- Easily installs using the included adjustable hanging brackets

Bulb Heaters With Exhaust Fan

- Rated type IC for ceiling insulated to R-40
- Utilizes 250 watt maximum type R40 medium base infrared lamp (lamp not included)
- Easily installs using the included adjustable hanging brackets

MODEL	CFM @ .1 SP	SONES @ .1 SP	HEATING ELEMENT	LIGHTING	LIGHT LENS	LISTING	DUCT SIZE	HOUSING SIZE
COMBINATION CERAMIC HEATER								
AK55L	70	5.0	1,350W Ceramic	100W or equivalent	Glass	UL	4"	14½"W x 8"D x 6½"H
DELUXE COMBINATION HEATER								
AK965L	70	3.5	1,500W NiChrome Wire	100W or equivalent	Glass	UL	4"	14½"W x 8"D x 6½"H
COMBINATION HEATER								
AK964	70	3.5	1,500W NiChrome Wire	100W or equivalent	Glass	UL	4"	14½"W x 8"D x 6½"H
BULB HEATER								
AK917	70	3.5	250W Bulb	250W Heat Bulb	-	UL	4"	8"W x 8"D x 5½"H
AK927	70	3.5	2-250W Bulbs	2-250W Heat Bulbs	-	UL	4"	8"W x 13¾"D x 5½"H



Fire Rated Exhaust Fans



FRAK Series

UL263/UL555C CLASSIFIED CLASSIFIED for Wood Frame Construction

Not all Fans are Created Equal

Life Safety Professionals work hard to develop and enforce building codes to eliminate or reduce potential threats. Nothing can be more frustrating and sometimes more costly than not having the correct product to comply with the building code for your project.

Wood is a Combustible Material

When you're building a multi-family residential project using wood frame construction you'll need to comply with stringent requirements to prevent the spread of fire. These are likely to include the use of fire rated products for ceiling penetrations such as bathroom exhaust fans. Air King Fire Rated Fans have been tested and are UL Listed for use in wood frame construction and have been successfully tested by UL in more designs than any major manufacturer.

You will see competitor certifications that will say "For use in any fire resistive floor or roof-ceiling assembly". That doesn't necessarily mean UL listed for wood frame construction. Wood construction is NOT fire resistive; wood is a combustible material that fire fighters usually consider fuel. The UL requirement for listing in this case requires mounting and testing of the fan in each approved design above an actual fire. You know you have the right product for the application when the manufacturer provides the design numbers for which the product was tested. No design number - Not UL Listed for wood frame construction.

Air King Fire Rated Fans, on the other hand, are UL Listed for the greatest number of wood frame designs at the time of this printing. Be sure you have the right product and save yourself a lot of time and trouble by starting with Air King.



FRAS Series

Fire Rated Series

- Three part system that includes a housing, motor/blade/grill and damper
- Available in single packs or in contractor packs of 4
- Low profile and durable, all metal grill with a painted, white finish
- Easily installs using the included adjustable hanging brackets
- UL Listed as fan/damper assembly for the following Wood Frame Construction designs:

L501 L502 L503 L506 L507 L508 L512 L513 L514 L515
L516 L517 L519 L522 L523 L533 L537 L545 L581 L583



MODEL	CFM @ .1 SP	SONES @ .1 SP	ASHRAE 62.2	CONTRACTOR PACK (MOTOR/HOUSING/DAMPER)	LISTING	DUCT SIZE	HOUSING SIZE
FRAS SERIES FIRE RATED EXHAUST FANS							
FRAS50	50	3.0	-	FA50T / AKFH1 / AKFD1	UL	3"	7 ³ / ₄ "W x 7 ³ / ₄ "D x 5 ⁷ / ₈ "H
FRAS70	70	5.0	-	FA70T / AKFH1 / AKFD1	UL	3"	7 ³ / ₄ "W x 7 ³ / ₄ "D x 5 ⁷ / ₈ "H
FRAK SERIES FIRE RATED EXHAUST FANS							
FRAK110	110	2.0	Local	FAK110T / AKFH2 / AKFD2	UL	4"	10 ⁷ / ₈ "W x 9 ⁹ / ₈ "D x 7 ⁷ / ₈ "H
FRAK130	130	2.5	Local	FAK130T / AKFH2 / AKFD2	UL	4"	10 ⁷ / ₈ "W x 9 ⁹ / ₈ "D x 7 ⁷ / ₈ "H

Quiet Fire Rated Exhaust Fans



ENERGY STAR® Certified Fire Rated Series

ENERGY STAR® version 4.0 Certified

- Solutions for **ASHRAE 62.2** continuous whole house ventilation or local ventilation (models with a sone rating of 1.0 or below can be used for whole house ventilation)
- Can be used to comply with California Title 24 as well as CALGreen (humidity sensing models meet the CALGreen requirements for use in bathrooms)
- Three part system that includes a housing, motor/blade/grill and damper
- 4" Round spring loaded metal damper protects against backdrafts
- Available in single packs or in contractor packs of 4
- Low profile and durable, all metal grill with a painted, white finish
- Easily installs using the included adjustable hanging brackets
- UL Listed as fan/damper assembly for the following Wood Frame Construction designs:

L501 L502 L503 L506 L507 L508 L512 L513 L514 L515
L516 L517 L519 L522 L523 L533 L537 L545 L581 L583

MODEL	CFM @ .1 SP	CFM @ .25 SP	SONES @ .1 SP	MAX. FAN WATTS	CONTRACTOR PACK (MOTOR/HOUSING/DAMPER)	LISTING	DUCT SIZE	HOUSING SIZE
FIRE RATED EXHAUST FANS								
FRAK50S	50	39	0.6	16.0	FAK50T / AKFH2 / AKFD2	UL	4"	10 ⁷ / ₈ "W x 9 ¹ / ₄ "D x 7 ⁷ / ₈ "H
FRAK80	80	68	1.0	28.1	FAK80T / AKFH2 / AKFD2	UL	4"	10 ⁷ / ₈ "W x 9 ¹ / ₄ "D x 7 ⁷ / ₈ "H
FRAK90	90	73	1.5	24.2	FAK90T / AKFH2 / AKFD2	UL	4"	10 ⁷ / ₈ "W x 9 ¹ / ₄ "D x 7 ⁷ / ₈ "H
FRAK100	100	82	2.0	27.5	FAK100T / AKFH2 / AKFD2	UL	4"	10 ⁷ / ₈ "W x 9 ¹ / ₄ "D x 7 ⁷ / ₈ "H
FRAK100D	100 / 50	82	2.0 / 0.8	27.5	N/A	UL	4"	10 ⁷ / ₈ "W x 9 ¹ / ₄ "D x 7 ⁷ / ₈ "H
FIRE RATED EXHAUST FANS with HUMIDITY SENSOR								
Integrated humidistat senses the humidity level of the room and turns the fan on (or to high speed for dual speed models) until the humidity level is below the preset level. Can be set up to 80% RH. The fan can also be activated through a wall control switch.								
FRAK50H	50	39	0.6	16.0	FAK50T / AKFH2H / AKFD2	UL	4"	10 ⁷ / ₈ "W x 9 ¹ / ₄ "D x 7 ⁷ / ₈ "H
FRAK80H	80	68	1.0	28.1	FAK80T / AKFH2H / AKFD2	UL	4"	10 ⁷ / ₈ "W x 9 ¹ / ₄ "D x 7 ⁷ / ₈ "H
FRAK90H	90	73	1.5	24.2	FAK90T / AKFH2H / AKFD2	UL	4"	10 ⁷ / ₈ "W x 9 ¹ / ₄ "D x 7 ⁷ / ₈ "H
FRAK100H	100	82	2.0	27.5	FAK100T / AKFH2H / AKFD2	UL	4"	10 ⁷ / ₈ "W x 9 ¹ / ₄ "D x 7 ⁷ / ₈ "H
FRAK100DH	100 / 50	82	2.0 / 0.8	27.5	N/A	UL	4"	10 ⁷ / ₈ "W x 9 ¹ / ₄ "D x 7 ⁷ / ₈ "H



Switches and Timers



ON/OFF SWITCHES

Model AKS2: White rocker style switch that allows the user independent on/off control of 2 functions such as fan and light.

Model AKS3: White rocker style switch that allows the user independent on/off control of 3 functions such as fan, light and night light.

Model AKS4: White rocker style switch that allows the user independent on/off control of 4 functions such as fan, light, night light, and additional room light.

TIMER SWITCHES *For use with Air King exhaust fans only.*

Model AKPT62: White, 24 hour - 7 day programmable switch with 7 On and 7 Off events per day and single push button controls. One touch push button override and LCD display screen. Includes rechargeable battery that provides up to 30 days of battery backup. **Rated for Fluorescent lights, Motors up to 1 HP, 15A Resistive/Tungsten.** Ideal for ASHRAE 62.2 installations and exhaust fans used to comply with the California Title 24 requirements.

Model AKEDT2: White or Almond color (both color options included with the switch) electronic delay timer that turns the fan and light on simultaneously while offering an electronic, automatic delay timer that allows the user to turn the light off while the fan continues to operate for an additional 20, 40, or 60 minutes before automatically turning off. The duration of operation time for the fan can easily be adjusted with the touch of the electronic button. **Rated for Fluorescent lights.**

Model AKDT60W: White, delay timer that turns the fan and light on simultaneously while offering an automatic delay timer that allows the user to turn the light off while the fan continues to operate for an additional preset time before automatically turning off. The duration of operation time for the fan can be adjusted from 1 to 60 minutes. Also available in Ivory color - Model **AKDT60I**.

Model AKDT63W: White, delay timer that turns the fan and light on simultaneously while offering an automatic delay timer that allows the user to turn the light off while the fan continues to operate for an additional preset time before automatically turning off. The duration of operation time for the fan can be adjusted from 1 to 60 minutes. Switch features a center Off position that allows the user to turn all functions off when selected. Also available in Ivory color - Model **AKDT63I**.

Models AKT120, AKT8H: White or Almond color (both color options included with the switch) timer that allows the user to electronically set the time up to 120 minutes (AKT120) in 15 minute increments or 8 hours (AKT8H) in 1 hour increments using the touch pad controls.

Models AKT60, AKT15: White or Almond color (both color options included with the switch) timer that allows the user to set the time up to 60 minutes (AKT60) or 15 minutes (AKT15).

SENSOR CONTROLS

Model AKOSW: White, occupancy sensor automatically turns the fan on when the room is occupied and continues to run for up to 30 minutes after the room is vacated. **Rated for Fluorescent lights** and the wall plate is included. Also available in Ivory color - Model **AKOSI**.

Model AKVSW: White, vacancy sensor is manually turned on with the push button power switch then automatically turns the fan off after 30 minutes once the room is no longer occupied. **Rated for Fluorescent lights** and the wall plate is included. **California Title 24 compliant.** Also available in Ivory color - Model **AKVSI**.

SPECIALTY CONTROLS

Model AKPAT3: White, 24 hour - 20 available ON/OFF position programmable switch. 3-way capable with manual push-button for temporary or continuous override of automatic programming. LCD display screen. **Rated for Fluorescent lights, Motors up to 1/2 HP, 15A Resistive/Tungsten.** Ideal for ASHRAE 62.2 installations and exhaust fans used to comply with the California Title 24 requirements.

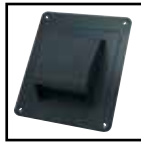
Model DH55: White, dehumidistat automatically turns the unit on/off according to the humidity level of the room and is easily adjusted to maximize the system.

Model AKT724H: White, electromechanical switch features an AM/PM dial format, capable of up to 36 on/off cycles per 24 hours with a manual OFF-ON-AUTO setting. Fits standard electrical boxes and includes a white wall plate.

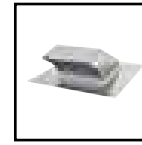
ROOF CAPS



RCB810: Includes plastic 4" round roof cap, 8' of 4" round flexible ducting, 3" to 4" adapter and 2 zip ties



RCB: ABS Plastic roof cap with damper and bird screen. Accepts up to 4" round ducting

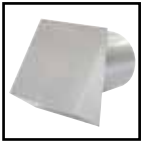


Roof caps with bird screens and dampers
PRC10R: Galvanized steel, accepts 10" round ducting
PRC8R: Galvanized steel, accepts 8" round ducting
PRC6R: Galvanized steel, accepts 6" round ducting

WALL CAPS



Aluminum wall caps with dampers
WC3NS: 3" round ducting
WC4NS: 4" round ducting



Wall caps with dampers
PWC10R: Galvanized steel, accepts 10" round ducting
PWC8R: Galvanized steel, accepts 8" round ducting
PWC6R: Galvanized steel, accepts 6" round ducting

LIGHT FIXTURES



AK8LED40: GU24 8 watt LED lamp, 4000K
AK6LED40: GU24 6 watt LED lamp, 4000K

FILTERS



MF161010: Nominal 10" x 10" x 2" MERV 16 Filter
MF61010: Nominal 10" x 10" x 2" MERV 6 Filter

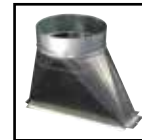
DUCTING ACCESSORIES



Metal back draft dampers
BDD4R: 4" round ducting
BDD6R: 6" round ducting
BDD8R: 8" round ducting
BDD10R: 10" round ducting
BDD12R: 12" round ducting



AK46R: Galvanized steel 4" round to 6" round duct transition
AK34R: Galvanized steel 3" round to 4" round duct transition



OA10V: Galvanized steel 4½" x 18½" to 10" round duct transition

CONTRACTOR PACKS

HOUSINGS	MOTOR/BLADE/GRILL	#PER PACK	CFM/SONES	DUCT SIZE	SINGLE PACK MODEL #	SINGLE PACK PAGE
ENERGY STAR® CERTIFIED HUMIDITY SENSING SERIES						
AK-1HA	AK80LS1T	4	80/1.0	4" plastic	AK80H	11
	AK110PNT	4	100/2.0	4" plastic	AK100H	11
ENERGY STAR CERTIFIED SERIES						
AK-2A6	AK80LS6T	4	80/0.5	6" plastic	AK80LS6	11
	AK90LS6T	4	90/0.8	6" plastic	AK90LS6	11
	AK100LS6T	4	100/1.0	6" plastic	AK100LS6	11
	AK110LS6T	4	110/1.4	6" plastic	AK110LS6	11
AK-1HSG	AK80LS1T	4	80/1.0	4" plastic	AK80LS-1	11
	AK80MBG	4	80/1.5	4" plastic	AK80	11
	AK90MBG	4	90/1.5	4" plastic	AK90	11
	AK110PNT	4	100/2.0	4" plastic	AK110PN	11
BFQHSG	BFQ50T	4	50/0.6	4" plastic	BFQ50	12
	BFQ75T	4	70/1.5	4" plastic	BFQ75	12
BFQ2HSG	BFQ50T	4	50/0.7	4" plastic	BFQ50W	12
	BFQ75T	4	70/1.5	4" plastic	BFQ75W	12
ENERGY STAR CERTIFIED HUMIDITY SENSING SERIES with LIGHT						
AK-3HA	LEDAK80T	4	80/1.0	4" plastic	LEDAK80H	11
	LEDAK100T	4	100/2.0	4" plastic	LEDAK100H	11
ENERGY STAR CERTIFIED SERIES with LIGHT						
AK-3HSG	LEDAK50T	4	50/0.5	4" plastic	LEDAK50	11
	LEDAK80T	4	80/1.0	4" plastic	LEDAK80	11
	LEDAK100T	4	100/2.0	4" plastic	LEDAK100	11
BFQLHSG	BFQL50T	4	50/0.5	4" plastic	BFQF50	12
	BFQL70T	4	70/1.5	4" plastic	BFQF70	12

HOUSINGS	MOTOR/BLADE/GRILL	#PER PACK	CFM/SONES	DUCT SIZE	SINGLE PACK MODEL #	SINGLE PACK PAGE
ADVANTAGE SERIES with LIGHT						
ASLCHSG	ASLC50MBG	4	50/3.0	4" plastic	ASLC50	13
	ASLC70MBG	4	70/4.0	4" plastic	ASLC70	13
SNAP-IN SERIES						
BFQHSG	BFQ80T	4	80/2.0	4" plastic	BFQ80	15
	BFQ90MBG	4	90/2.5	4" plastic	BFQ90	15
	BFQ110MBG	4	100/3.5	4" plastic	BFQ110	15
	BFQ140MBG	4	120/4.0	4" plastic	BFQ140	15
BFQ2HSG	BFQ80T	4	80/2.0	4" plastic	BFQ80W	15
ADVANTAGE SERIES						
ASHSG	AS50MBG	6	50/3.0	3" plastic	AS50	15
	AS70MBG	6	70/4.0	3" plastic	AS70	15
AWCHSG ⁴	AS50MBG	6	50/3.0	3" plastic	N/A	15
	AS70MBG	6	70/4.0	3" plastic	N/A	15
ASMTLHSG	AS50MBG	6	50/3.0	3" metal	N/A	15
	AS70MBG	6	70/4.0	3" metal	N/A	15
ATL18HSG ⁵	AS50MBG	18 / 6	50/3.0	4" plastic	N/A	15
	AS70MBG	18 / 6	70/4.0	4" plastic	N/A	15
COMBINATION CERAMIC HEATERS						
AK55LHSG	AK55LT	1	70/5.0	4" metal	AK55L	17
FIRE RATED SERIES						
See pages 18 and 19 for contractor pack configurations						

⁴ Wago® Quick Connect Housing, includes Wago® Wall Nuts™ for wiring connection
⁵ ATL18HSG sold in packs of 18, model AS54 utilizes ATL18HSG and AS50MBG

Specifications

MODEL	CFM	SONES	SOUND LEVEL	LIGHTING	ENERGY STAR	CALGREEN	ASHRAE 62.2	LISTING	DUCT SIZE	HOUSING SIZE	PAGE
QFAM	40-120	N/A	Almost Silent	N/A	NO	NO	Fresh Air	UL	6"	14 7/8"W x 10 1/2"D x 11 1/2"H	6
FAS	40-120	N/A	Almost Silent	N/A	NO	NO	Fresh Air	UL	6"	14 7/8"W x 10 1/2"D x 11 1/2"H	6
D4S	40-120	<0.3 - 0.3	Almost Silent	N/A	YES	Other Rooms	Whole Building/Local	ETL	6"	12 7/8"W x 12 3/4"D x 9 7/8"H	7
D4D	40-120	<0.3 - 0.3	Almost Silent	N/A	YES	Other Rooms	Whole Building/Local	ETL	6"	12 7/8"W x 12 3/4"D x 9 7/8"H	7
D4SG	40-120	<0.3 - 0.3	Almost Silent	N/A	YES	Other Rooms	Whole Building/Local	ETL	6"	12 7/8"W x 12 3/4"D x 9 7/8"H	7
D4DG	40-120	<0.3 - 0.3	Almost Silent	N/A	YES	Other Rooms	Whole Building/Local	ETL	6"	12 7/8"W x 12 3/4"D x 9 7/8"H	7
D4SGH	40-120	<0.3 - 0.3	Almost Silent	N/A	YES	Other Rooms	Whole Building/Local	ETL	6"	12 7/8"W x 12 3/4"D x 9 7/8"H	7
D4DGH	40-120	<0.3 - 0.3	Almost Silent	N/A	YES	Other Rooms	Whole Building/Local	ETL	6"	12 7/8"W x 12 3/4"D x 9 7/8"H	7
D4SH	40-120	<0.3 - 0.3	Almost Silent	N/A	YES	Other Rooms	Whole Building/Local	ETL	6"	12 7/8"W x 12 3/4"D x 9 7/8"H	7
D4DH	40-120	<0.3 - 0.3	Almost Silent	N/A	YES	Other Rooms	Whole Building/Local	ETL	6"	12 7/8"W x 12 3/4"D x 9 7/8"H	7
DL4S	30-130	<0.3 - 0.3	Almost Silent	LED	YES	Other Rooms	Whole Building/Local	ETL	6"	12 7/8"W x 12 3/4"D x 9 7/8"H	7
DL4D	30-130	<0.3 - 0.3	Almost Silent	LED	YES	Other Rooms	Whole Building/Local	ETL	6"	12 7/8"W x 12 3/4"D x 9 7/8"H	7
DL4SG	30-130	<0.3 - 0.3	Almost Silent	LED	YES	Other Rooms	Whole Building/Local	ETL	6"	12 7/8"W x 12 3/4"D x 9 7/8"H	7
DL4DG	30-130	<0.3 - 0.3	Almost Silent	LED	YES	Other Rooms	Whole Building/Local	ETL	6"	12 7/8"W x 12 3/4"D x 9 7/8"H	7
DL4SGH	30-130	<0.3 - 0.3	Almost Silent	LED	YES	Other Rooms	Whole Building/Local	ETL	6"	12 7/8"W x 12 3/4"D x 9 7/8"H	7
DL4DGH	30-130	<0.3 - 0.3	Almost Silent	LED	YES	Other Rooms	Whole Building/Local	ETL	6"	12 7/8"W x 12 3/4"D x 9 7/8"H	7
DL4SH	30-130	<0.3 - 0.3	Almost Silent	LED	YES	Other Rooms	Whole Building/Local	ETL	6"	12 7/8"W x 12 3/4"D x 9 7/8"H	7
DL4DH	30-130	<0.3 - 0.3	Almost Silent	LED	YES	Other Rooms	Whole Building/Local	ETL	6"	12 7/8"W x 12 3/4"D x 9 7/8"H	7
E80S	80	<0.3	Almost Silent	N/A	YES	Other Rooms	Whole Building/Local	ETL	6"	12 7/8"W x 12 3/4"D x 9 7/8"H	8
E80D	80/30	<0.3	Almost Silent	N/A	YES	Other Rooms	Whole Building/Local	ETL	6"	12 7/8"W x 12 3/4"D x 9 7/8"H	8
E110S	110	<0.3	Almost Silent	N/A	YES	Other Rooms	Whole Building/Local	ETL	6"	12 7/8"W x 12 3/4"D x 9 7/8"H	8
E110D	110/50	<0.3	Almost Silent	N/A	YES	Other Rooms	Whole Building/Local	ETL	6"	12 7/8"W x 12 3/4"D x 9 7/8"H	8
E130S	130	<0.3	Almost Silent	N/A	YES	Other Rooms	Whole Building/Local	ETL	6"	12 7/8"W x 12 3/4"D x 9 7/8"H	8
E130D	130/50	<0.3	Almost Silent	N/A	YES	Other Rooms	Whole Building/Local	ETL	6"	12 7/8"W x 12 3/4"D x 9 7/8"H	8
E80SG	80	<0.3	Almost Silent	N/A	YES	Other Rooms	Whole Building/Local	ETL	6"	12 7/8"W x 12 3/4"D x 9 7/8"H	8
E80DG	80/30	<0.3	Almost Silent	N/A	YES	Other Rooms	Whole Building/Local	ETL	6"	12 7/8"W x 12 3/4"D x 9 7/8"H	8
E130SG	130	<0.3	Almost Silent	N/A	YES	Other Rooms	Whole Building/Local	ETL	6"	12 7/8"W x 12 3/4"D x 9 7/8"H	8
E130DG	130/50	<0.3	Almost Silent	N/A	YES	Other Rooms	Whole Building/Local	ETL	6"	12 7/8"W x 12 3/4"D x 9 7/8"H	8
E80SGH	80	<0.3	Almost Silent	N/A	YES	Bathrooms	Whole Building/Local	ETL	6"	12 7/8"W x 12 3/4"D x 9 7/8"H	8
E80DGH	80/30	<0.3	Almost Silent	N/A	YES	Bathrooms	Whole Building/Local	ETL	6"	12 7/8"W x 12 3/4"D x 9 7/8"H	8
E130SGH	130	<0.3	Almost Silent	N/A	YES	Bathrooms	Whole Building/Local	ETL	6"	12 7/8"W x 12 3/4"D x 9 7/8"H	8
E130DGH	130/50	<0.3	Almost Silent	N/A	YES	Bathrooms	Whole Building/Local	ETL	6"	12 7/8"W x 12 3/4"D x 9 7/8"H	8
E80SH	80	<0.3	Almost Silent	N/A	YES	Bathrooms	Whole Building/Local	ETL	6"	12 7/8"W x 12 3/4"D x 9 7/8"H	8
E80DH	80/30	<0.3	Almost Silent	N/A	YES	Bathrooms	Whole Building/Local	ETL	6"	12 7/8"W x 12 3/4"D x 9 7/8"H	8
E130SH	130	<0.3	Almost Silent	N/A	YES	Bathrooms	Whole Building/Local	ETL	6"	12 7/8"W x 12 3/4"D x 9 7/8"H	8
E130DH	130/50	<0.3	Almost Silent	N/A	YES	Bathrooms	Whole Building/Local	ETL	6"	12 7/8"W x 12 3/4"D x 9 7/8"H	8
EL80S	80	<0.3	Almost Silent	LED	YES	Other Rooms	Whole Building/Local	ETL	6"	12 7/8"W x 12 3/4"D x 9 7/8"H	9
EL80D	80/30	<0.3	Almost Silent	LED	YES	Other Rooms	Whole Building/Local	ETL	6"	12 7/8"W x 12 3/4"D x 9 7/8"H	9
EL130S	130	<0.3	Almost Silent	LED	YES	Other Rooms	Whole Building/Local	ETL	6"	12 7/8"W x 12 3/4"D x 9 7/8"H	9
EL130D	130/50	<0.3	Almost Silent	LED	YES	Other Rooms	Whole Building/Local	ETL	6"	12 7/8"W x 12 3/4"D x 9 7/8"H	9
EL80SG	80	<0.3	Almost Silent	LED	YES	Other Rooms	Whole Building/Local	ETL	6"	12 7/8"W x 12 3/4"D x 9 7/8"H	9
EL80DG	80/30	<0.3	Almost Silent	LED	YES	Other Rooms	Whole Building/Local	ETL	6"	12 7/8"W x 12 3/4"D x 9 7/8"H	9
EL130SG	130	<0.3	Almost Silent	LED	YES	Other Rooms	Whole Building/Local	ETL	6"	12 7/8"W x 12 3/4"D x 9 7/8"H	9
EL130DG	130/50	<0.3	Almost Silent	LED	YES	Other Rooms	Whole Building/Local	ETL	6"	12 7/8"W x 12 3/4"D x 9 7/8"H	9
EL80SGH	80	<0.3	Almost Silent	LED	YES	Bathrooms	Whole Building/Local	ETL	6"	12 7/8"W x 12 3/4"D x 9 7/8"H	9
EL80DGH	80/30	<0.3	Almost Silent	LED	YES	Bathrooms	Whole Building/Local	ETL	6"	12 7/8"W x 12 3/4"D x 9 7/8"H	9
EL130SGH	130	<0.3	Almost Silent	LED	YES	Bathrooms	Whole Building/Local	ETL	6"	12 7/8"W x 12 3/4"D x 9 7/8"H	9
EL130DGH	130/50	<0.3	Almost Silent	LED	YES	Bathrooms	Whole Building/Local	ETL	6"	12 7/8"W x 12 3/4"D x 9 7/8"H	9
EL80SH	80	<0.3	Almost Silent	LED	YES	Bathrooms	Whole Building/Local	ETL	6"	12 7/8"W x 12 3/4"D x 9 7/8"H	9
EL80DH	80/30	<0.3	Almost Silent	LED	YES	Bathrooms	Whole Building/Local	ETL	6"	12 7/8"W x 12 3/4"D x 9 7/8"H	9
EL130SH	130	<0.3	Almost Silent	LED	YES	Bathrooms	Whole Building/Local	ETL	6"	12 7/8"W x 12 3/4"D x 9 7/8"H	9
EL130DH	130/50	<0.3	Almost Silent	LED	YES	Bathrooms	Whole Building/Local	ETL	6"	12 7/8"W x 12 3/4"D x 9 7/8"H	9
EVD	30-150	<0.3	Almost Silent	N/A	YES	Other Rooms	Whole Building/Local	ETL	6"	12 7/8"W x 12 3/4"D x 9 7/8"H	10
EVDG	30-150	<0.3	Almost Silent	N/A	YES	Other Rooms	Whole Building/Local	ETL	6"	12 7/8"W x 12 3/4"D x 9 7/8"H	10
EVDGH	30-150	<0.3	Almost Silent	N/A	YES	Bathrooms	Whole Building/Local	ETL	6"	12 7/8"W x 12 3/4"D x 9 7/8"H	10
EVDH	30-150	<0.3	Almost Silent	N/A	YES	Bathrooms	Whole Building/Local	ETL	6"	12 7/8"W x 12 3/4"D x 9 7/8"H	10
EVLD	30-150	<0.3	Almost Silent	LED	YES	Other Rooms	Whole Building/Local	ETL	6"	12 7/8"W x 12 3/4"D x 9 7/8"H	10
EVLDG	30-150	<0.3	Almost Silent	LED	YES	Other Rooms	Whole Building/Local	ETL	6"	12 7/8"W x 12 3/4"D x 9 7/8"H	10
EVLGDH	30-150	<0.3	Almost Silent	LED	YES	Bathrooms	Whole Building/Local	ETL	6"	12 7/8"W x 12 3/4"D x 9 7/8"H	10
EVLDH	30-150	<0.3	Almost Silent	LED	YES	Bathrooms	Whole Building/Local	ETL	6"	12 7/8"W x 12 3/4"D x 9 7/8"H	10
AK80LS6	80	0.5	Very Quiet	N/A	YES	Other Rooms	Whole Building/Local	UL	6"	10 7/8"W x 9 3/8"D x 7 7/8"H	11
AK90LS6	90	0.8	Very Quiet	N/A	YES	Other Rooms	Whole Building/Local	UL	6"	10 7/8"W x 9 3/8"D x 7 7/8"H	11
AK100LS6	100	1.0	Very Quiet	N/A	YES	Other Rooms	Whole Building/Local	UL	6"	10 7/8"W x 9 3/8"D x 7 7/8"H	11
AK110LS6	110	1.4	Quiet	N/A	YES	Other Rooms	Local	UL	6"	10 7/8"W x 9 3/8"D x 7 7/8"H	11
AK150LS	150	0.8	Very Quiet	N/A	YES	Other Rooms	Whole Building/Local	ETL	6"	12 7/8"W x 12 3/4"D x 9 7/8"H	11
AK150D	150 / 80	0.6 / <0.3	Very Quiet	N/A	YES	Other Rooms	Whole Building/Local	ETL	6"	12 7/8"W x 12 3/4"D x 9 7/8"H	11
AK200LS	200	1.2	Quiet	N/A	YES	Other Rooms	Local	UL	6"	12 7/8"W x 12 3/4"D x 9 7/8"H	11
AK280LS	280	3.0	Quiet	N/A	YES	Other Rooms	Local	UL	6"	12 7/8"W x 12 3/4"D x 9 7/8"H	11
AK80LS	80	0.7	Very Quiet	N/A	YES	Other Rooms	Whole Building/Local	UL	4"	10 7/8"W x 9 3/8"D x 7 7/8"H	11
AK110LS	110	1.5	Quiet	N/A	YES	Other Rooms	Whole Building/Local	UL	4"	10 7/8"W x 9 3/8"D x 7 7/8"H	11
AK80LS-1	80	1.0	Very Quiet	N/A	YES	Other Rooms	Whole Building/Local	UL	4"	10 7/8"W x 9 3/8"D x 7 7/8"H	11
AK50S	50	0.5	Very Quiet	N/A	YES	Other Rooms	Whole Building/Local	UL	4"	10 7/8"W x 9 3/8"D x 7 7/8"H	11

Whole Building/Local refers to sound ratings for ventilation fans under ASHRAE 62.2. This standard requires continuously and intermittently operated fans to be rated 1 sone or less.

Specifications

MODEL	CFM	SONES	SOUND LEVEL	LIGHTING	ENERGY STAR	CALGREEN	ASHRAE 62.2	LISTING	DUCT SIZE	HOUSING SIZE	PAGE
LEDAK50	50	0.3	Very Quiet	LED	YES	Other Rooms	Whole Building/Local	UL	4"	10 $\frac{1}{2}$ "W x 9 $\frac{1}{2}$ "D x 7 $\frac{1}{2}$ "H	11
AK80	80	1.5	Quiet	N/A	YES	Other Rooms	Local	UL	4"	10 $\frac{1}{2}$ "W x 9 $\frac{1}{2}$ "D x 7 $\frac{1}{2}$ "H	11
LEDAK80	80	1.0	Very Quiet	LED	YES	Other Rooms	Whole Building/Local	UL	4"	10 $\frac{1}{2}$ "W x 9 $\frac{1}{2}$ "D x 7 $\frac{1}{2}$ "H	11
AK90	90	1.5	Quiet	N/A	YES	Other Rooms	Local	UL	4"	10 $\frac{1}{2}$ "W x 9 $\frac{1}{2}$ "D x 7 $\frac{1}{2}$ "H	11
BFC90	90	1.0	Very Quiet	N/A	YES	Other Rooms	Local	UL	4"	9"W x 9"D x 7 $\frac{1}{2}$ "H	11
AK110PN	100	2.0	Quiet	N/A	YES	Other Rooms	Local	UL	4"	10 $\frac{1}{2}$ "W x 9 $\frac{1}{2}$ "D x 7 $\frac{1}{2}$ "H	11
AK100D	100 / 50	2.0 / 0.4	Very Quiet	N/A	YES	Other Rooms	Whole Building/Local	UL	4"	10 $\frac{1}{2}$ "W x 9 $\frac{1}{2}$ "D x 7 $\frac{1}{2}$ "H	11
LEDAK100	100	2.0	Quiet	LED	YES	Other Rooms	Local	UL	4"	10 $\frac{1}{2}$ "W x 9 $\frac{1}{2}$ "D x 7 $\frac{1}{2}$ "H	11
LEDAK100D	100 / 50	2.0 / 0.4	Very Quiet	LED	YES	Other Rooms	Whole Building/Local	UL	4"	10 $\frac{1}{2}$ "W x 9 $\frac{1}{2}$ "D x 7 $\frac{1}{2}$ "H	11
AK80H	80	1.0	Very Quiet	N/A	YES	Bathrooms	Whole Building/Local	ETL	4"	10 $\frac{1}{2}$ "W x 9 $\frac{1}{2}$ "D x 7 $\frac{1}{2}$ "H	11
LEDAK80H	80	1.0	Very Quiet	LED	YES	Bathrooms	Whole Building/Local	ETL	4"	10 $\frac{1}{2}$ "W x 9 $\frac{1}{2}$ "D x 7 $\frac{1}{2}$ "H	11
BFC90H	90	1.0	Very Quiet	N/A	YES	Bathrooms	Local	UL	4"	9"W x 9"D x 7 $\frac{1}{2}$ "H	11
AK100H	100	2.0	Quiet	N/A	YES	Bathrooms	Local	ETL	4"	10 $\frac{1}{2}$ "W x 9 $\frac{1}{2}$ "D x 7 $\frac{1}{2}$ "H	11
AK100DH	100 / 50	2.0 / 0.4	Quiet	N/A	YES	Bathrooms	Local	ETL	4"	10 $\frac{1}{2}$ "W x 9 $\frac{1}{2}$ "D x 7 $\frac{1}{2}$ "H	11
LEDAK100H	100	2.0	Quiet	LED	YES	Bathrooms	Local	ETL	4"	10 $\frac{1}{2}$ "W x 9 $\frac{1}{2}$ "D x 7 $\frac{1}{2}$ "H	11
LED100DH	100 / 50	2.0 / 0.4	Quiet	LED	YES	Bathrooms	Local	ETL	4"	10 $\frac{1}{2}$ "W x 9 $\frac{1}{2}$ "D x 7 $\frac{1}{2}$ "H	11
AK80LS6H	80	0.5	Very Quiet	N/A	YES	Bathrooms	Whole Building/Local	UL	6"	10 $\frac{1}{2}$ "W x 9 $\frac{1}{2}$ "D x 7 $\frac{1}{2}$ "H	11
AK100LS6H	100	1.0	Very Quiet	N/A	YES	Bathrooms	Whole Building/Local	ETL	6"	10 $\frac{1}{2}$ "W x 9 $\frac{1}{2}$ "D x 7 $\frac{1}{2}$ "H	11
AK150DH	150 / 80	0.6 / <0.3	Very Quiet	N/A	YES	Other Rooms	Whole Building/Local	ETL	6"	12 $\frac{1}{2}$ "W x 12 $\frac{3}{4}$ "D x 9 $\frac{1}{2}$ "H	11
BFQ50	50	0.6	Very Quiet	N/A	YES	Other Rooms	Whole Building/Local	UL	4"	9 $\frac{1}{2}$ "W x 8 $\frac{3}{8}$ "D x 4 $\frac{3}{4}$ "H	12
BFQ75	70	1.5	Quiet	N/A	YES	Other Rooms	Local	UL	4"	9 $\frac{1}{2}$ "W x 8 $\frac{1}{8}$ "D x 4 $\frac{3}{4}$ "H	12
BFQ50W	50	0.8	Very Quiet	N/A	YES	Other Rooms	Whole Building/Local	UL	4"	9 $\frac{1}{2}$ "W x 8 $\frac{3}{8}$ "D x 4 $\frac{3}{4}$ "H	12
BFQ70W	70	1.5	Quiet	N/A	YES	Other Rooms	Local	UL	4"	9 $\frac{1}{2}$ "W x 8 $\frac{1}{8}$ "D x 4 $\frac{3}{4}$ "H	12
BFQL50	50	0.8	Very Quiet	LED	YES	Other Rooms	Whole Building/Local	UL	4"	9 $\frac{1}{2}$ "W x 8 $\frac{3}{8}$ "D x 4 $\frac{3}{4}$ "H	12
BFQL70	70	2.0	Quiet	LED	YES	Other Rooms	Local	UL	4"	9 $\frac{1}{2}$ "W x 8 $\frac{1}{8}$ "D x 4 $\frac{3}{4}$ "H	12
AK100L	100	2.5	Quiet	Incandescent	NO	NO	Local	UL	4"	9 $\frac{1}{2}$ "W x 10 $\frac{1}{2}$ "D x 7 $\frac{1}{2}$ "H	13
ASLC50	50	3.0	Quiet	Incandescent	NO	NO	Local	UL	4"	7 $\frac{3}{8}$ "W x 7 $\frac{1}{2}$ "D x 5 $\frac{1}{8}$ "H	13
ASLC70	70	4.0	Moderate	Incandescent	NO	NO	NO	UL	4"	7 $\frac{3}{8}$ "W x 7 $\frac{1}{2}$ "D x 5 $\frac{1}{8}$ "H	13
ASLC90	90	2.5	Quiet	Incandescent	NO	NO	Local	UL	4"	9 $\frac{1}{2}$ "W x 9"D x 5 $\frac{1}{8}$ "H	13
ASLC120	120	4.0	Moderate	Incandescent	NO	NO	NO	UL	4"	9 $\frac{1}{2}$ "W x 9"D x 5 $\frac{1}{8}$ "H	13
AKLC701	70	2.5	Quiet	Incandescent	NO	NO	Local	UL	4"	7 $\frac{3}{8}$ "W x 7 $\frac{1}{2}$ "D x 5 $\frac{1}{8}$ "H	14
AKLC702	70	2.5	Quiet	Incandescent	NO	NO	Local	UL	4"	7 $\frac{3}{8}$ "W x 7 $\frac{1}{2}$ "D x 5 $\frac{1}{8}$ "H	14
AKLC703	70	2.5	Quiet	Incandescent	NO	NO	Local	UL	4"	7 $\frac{3}{8}$ "W x 7 $\frac{1}{2}$ "D x 5 $\frac{1}{8}$ "H	14
AKLC70SLN	70	2.5	Quiet	Incandescent	NO	NO	Local	UL	4"	7 $\frac{3}{8}$ "W x 7 $\frac{1}{2}$ "D x 5 $\frac{1}{8}$ "H	14
AKLC70SLW	70	2.5	Quiet	Incandescent	NO	NO	Local	UL	4"	7 $\frac{3}{8}$ "W x 7 $\frac{1}{2}$ "D x 5 $\frac{1}{8}$ "H	14
AKLC70DW	70	2.5	Quiet	Incandescent	NO	NO	Local	UL	4"	7 $\frac{3}{8}$ "W x 7 $\frac{1}{2}$ "D x 5 $\frac{1}{8}$ "H	14
AKLC70RCB	70	2.5	Quiet	Incandescent	NO	NO	Local	UL	4"	7 $\frac{3}{8}$ "W x 7 $\frac{1}{2}$ "D x 5 $\frac{1}{8}$ "H	14
AKLC70DRSB	70	2.5	Quiet	Incandescent	NO	NO	Local	UL	4"	7 $\frac{3}{8}$ "W x 7 $\frac{1}{2}$ "D x 5 $\frac{1}{8}$ "H	14
AKLC70SNS	70	2.5	Quiet	Incandescent	NO	NO	Local	UL	4"	7 $\frac{3}{8}$ "W x 7 $\frac{1}{2}$ "D x 5 $\frac{1}{8}$ "H	14
DRLC701	70	4.0	Moderate	Incandescent	NO	NO	NO	UL	4"	7 $\frac{3}{8}$ "W x 7 $\frac{1}{2}$ "D x 5 $\frac{1}{8}$ "H	14
DRLC702	70	4.0	Moderate	Incandescent	NO	NO	NO	UL	4"	7 $\frac{3}{8}$ "W x 7 $\frac{1}{2}$ "D x 5 $\frac{1}{8}$ "H	14
DRLC703	70	4.0	Moderate	Incandescent	NO	NO	NO	UL	4"	7 $\frac{3}{8}$ "W x 7 $\frac{1}{2}$ "D x 5 $\frac{1}{8}$ "H	14
BFQ80	80	2.0	Quiet	N/A	NO	NO	Local	UL	4"	9 $\frac{1}{2}$ "W x 8 $\frac{1}{2}$ "D x 4 $\frac{3}{4}$ "H	15
BFQ90	90	2.5	Quiet	N/A	NO	NO	Local	UL	4"	9 $\frac{1}{2}$ "W x 8 $\frac{1}{2}$ "D x 4 $\frac{3}{4}$ "H	15
BFQ110	100	3.5	Moderate	N/A	NO	NO	NO	UL	4"	9 $\frac{1}{2}$ "W x 8 $\frac{1}{2}$ "D x 4 $\frac{3}{4}$ "H	15
BFQ140	120	4.0	Moderate	N/A	NO	NO	NO	UL	4"	9 $\frac{1}{2}$ "W x 8 $\frac{1}{2}$ "D x 4 $\frac{3}{4}$ "H	15
AS54	50	3.0	Quiet	N/A	NO	NO	Local	UL	4"	7 $\frac{1}{4}$ "W x 7 $\frac{1}{4}$ "D x 3 $\frac{3}{4}$ "H	15
AS50	50	3.0	Quiet	N/A	NO	NO	NO	UL	3"	7 $\frac{1}{4}$ "W x 7 $\frac{1}{4}$ "D x 3 $\frac{3}{4}$ "H	15
AS70	70	4.0	High	N/A	NO	NO	NO	UL	3"	7 $\frac{1}{4}$ "W x 7 $\frac{1}{4}$ "D x 3 $\frac{3}{4}$ "H	15
EFW-180	180	6.5	High	N/A	NO	NO	NO	UL	8"	14 $\frac{1}{2}$ "W x 4 $\frac{1}{2}$ "-9 $\frac{1}{2}$ "D x 14 $\frac{1}{4}$ "H	15
AK400	420	1.5	Quiet	N/A	NO	NO	Local	ETL	4 $\frac{1}{2}$ x18 $\frac{1}{2}$ "	23 $\frac{1}{2}$ "W x 12 $\frac{3}{4}$ "D x 12 $\frac{3}{4}$ "H	16
AK500	520	2.5	Quiet	N/A	NO	NO	Local	ETL	4 $\frac{1}{2}$ x18 $\frac{1}{2}$ "	23 $\frac{1}{2}$ "W x 12 $\frac{3}{4}$ "D x 12 $\frac{3}{4}$ "H	16
AK600	620	3.5	Moderate	N/A	NO	NO	NO	ETL	4 $\frac{1}{2}$ x18 $\frac{1}{2}$ "	23 $\frac{1}{2}$ "W x 12 $\frac{3}{4}$ "D x 12 $\frac{3}{4}$ "H	16
AK55L	70	5.0	High	Incandescent	NO	NO	NO	UL	4"	14 $\frac{1}{2}$ "W x 8 $\frac{1}{2}$ "D x 6 $\frac{1}{2}$ "H	17
AK965L	70	3.5	Moderate	Incandescent	NO	NO	NO	UL	4"	14 $\frac{1}{2}$ "W x 8 $\frac{1}{2}$ "D x 6 $\frac{1}{2}$ "H	17
AK964	70	3.5	Moderate	Incandescent	NO	NO	NO	UL	4"	14 $\frac{1}{2}$ "W x 8 $\frac{1}{2}$ "D x 6 $\frac{1}{2}$ "H	17
AK917	70	3.5	Moderate	Heat Lamp	NO	NO	NO	UL	4"	8"W x 8"D x 5 $\frac{1}{8}$ "H	17
AK927	70	3.5	Moderate	Heat Lamp	NO	NO	NO	UL	4"	8"W x 13 $\frac{3}{8}$ "D x 5 $\frac{1}{8}$ "H	17
FRAS50	50	3.0	Quiet	N/A	NO	NO	NO	UL	3"	7 $\frac{3}{4}$ "W x 7 $\frac{3}{4}$ "D x 5 $\frac{1}{8}$ "H	18
FRAS70	70	5.0	High	N/A	NO	NO	NO	UL	3"	7 $\frac{3}{4}$ "W x 7 $\frac{3}{4}$ "D x 5 $\frac{1}{8}$ "H	18
FRAK110	110	2.0	Quiet	N/A	NO	NO	Local	UL	4"	10 $\frac{1}{2}$ "W x 9 $\frac{1}{2}$ "D x 7 $\frac{1}{2}$ "H	18
FRAK130	130	2.5	Quiet	N/A	NO	NO	Local	UL	4"	10 $\frac{1}{2}$ "W x 9 $\frac{1}{2}$ "D x 7 $\frac{1}{2}$ "H	18
FRAK50S	50	0.6	Very Quiet	N/A	YES	Other Rooms	Whole Building/Local	UL	4"	10 $\frac{1}{4}$ "W x 9 $\frac{1}{4}$ "D x 7 $\frac{1}{8}$ "H	19
FRAK80	80	1.0	Very Quiet	N/A	YES	Other Rooms	Whole Building/Local	UL	4"	10 $\frac{1}{4}$ "W x 9 $\frac{1}{4}$ "D x 7 $\frac{1}{8}$ "H	19
FRAK90	90	1.5	Quiet	N/A	YES	Other Rooms	Local	UL	4"	10 $\frac{1}{4}$ "W x 9 $\frac{1}{4}$ "D x 7 $\frac{1}{8}$ "H	19
FRAK100	100	2.0	Quiet	N/A	YES	Other Rooms	Local	UL	4"	10 $\frac{1}{4}$ "W x 9 $\frac{1}{4}$ "D x 7 $\frac{1}{8}$ "H	19
FRAK100D	100 / 50	2.0 / 0.8	Very Quiet	N/A	YES	Other Rooms	Whole Building/Local	UL	4"	10 $\frac{1}{4}$ "W x 9 $\frac{1}{4}$ "D x 7 $\frac{1}{8}$ "H	19
FRAK50H	50	0.6	Very Quiet	N/A	YES	Other Rooms	Whole Building/Local	UL	4"	10 $\frac{1}{4}$ "W x 9 $\frac{1}{4}$ "D x 7 $\frac{1}{8}$ "H	19
FRAK80H	80	1.0	Very Quiet	N/A	YES	Bathrooms	Whole Building/Local	UL	4"	10 $\frac{1}{4}$ "W x 9 $\frac{1}{4}$ "D x 7 $\frac{1}{8}$ "H	19
FRAK90H	90	1.5	Quiet	N/A	YES	Bathrooms	Local	UL	4"	10 $\frac{1}{4}$ "W x 9 $\frac{1}{4}$ "D x 7 $\frac{1}{8}$ "H	19
FRAK100H	100	2.0	Quiet	N/A	YES	Bathrooms	Local	UL	4"	10 $\frac{1}{4}$ "W x 9 $\frac{1}{4}$ "D x 7 $\frac{1}{8}$ "H	19
FRAK100DH	100 / 50	2.0 / 0.8	Quiet	N/A	YES	Bathrooms	Local	UL	4"	10 $\frac{1}{4}$ "W x 9 $\frac{1}{4}$ "D x 7 $\frac{1}{8}$ "H	19

Whole Building/Local refers to sound ratings for ventilation fans under ASHRAE 62.2. This standard requires continuously and intermittently operated fans to be rated 1 sone or less.



TOTAL HOME VENTILATION

CONTINUOUS VENTILATION



OUTDOOR AIR



KITCHEN VENTILATION



BATHROOM VENTILATION



Products Featured In the 2017



with the Carey Brothers



Products Featured In

The **ABC GreenHome™ 3.0**



Products Featured In the

THE **NEW AMERICAN REMODELED HOME** 2017



4 TIME ENERGY STAR® PARTNER OF THE YEAR

2017, 2013 and 2012 Partner of the Year
2014 Sustained Excellence & Climate Communications



Printed using low VOC inks on a composite of post consumer fiber, recycled paper and virgin pulp derived from sustainably managed forests.

