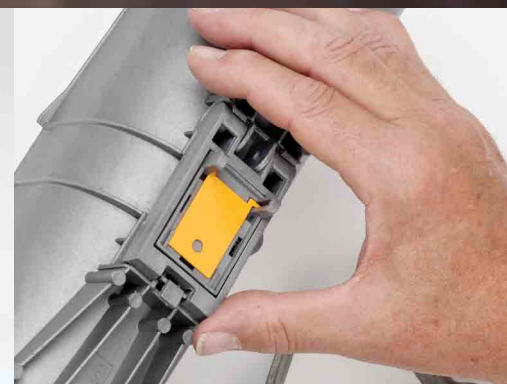


# SNAP 'N SHIELD™ clevis and pipe supports





## Clevis Support Features

- Suited for horizontal pipe runs
- Snaps directly onto clevis hanger
- Integrated slots for liquid line tie wraps
- Fast, easy installation – no tools required
- Snap-on design helps eliminate shield movement, helping prevent insulation damage that can lead to costly leaks
- Allows pipe to expand without damaging the insulation
- Helps protect insulation from damage caused by rubbing against clevis hanger
- Optional magnetic shock detection device (tool-free "clip-on" design); three flags available for different shock intensity
- Available in gray

## Clevis Support Technical Specifications

### Applications:

Refrigeration, air conditioning, and plumbing

### Material:

Thermylene P6-20FG-0738

- UV resistant
- Operating temperature -40° to 178°F
- Paintable (preserves mechanical properties even after painting)
- Non-adhesive surface for linear expansion of thermal insulation

### Certification:

UL classified for USA (UL-723 (ASTM E 84) and ULC listed for Canada (ULC-S102.2). Meets UL94 HB flammability standards.

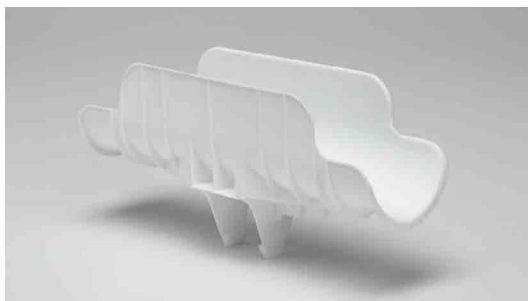
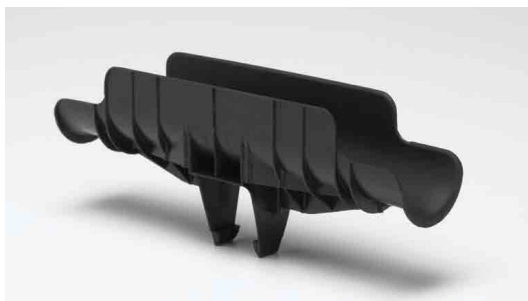
# SNAP 'N SHIELD™ clevis

Reliable, durable and cost-effective way to protect your insulation

Catalog #	Nominal Inside Opening	Wt./C	Clevis Hanger Size
BPH250G	2.34"	22.9	B3100-2
BPH350G	3.45"	33.2	B3100-3
BPH450G	4.50"	45.8	B3100-4
BPH550G	5.53"	57.7	B3100-5
BPH650G	6.64"	68.0	B3100-6
BPH850G	8.64"	150	B3100-8

Copper Tubing Size	Insulation Thickness				
	½"	¾"	1"	1 ½"	2"
¼"	BPH250	BPH250	BPH350	BPH350	BPH450
⅜"	BPH250	BPH250	BPH350	BPH450	BPH450
½"	BPH250	BPH250	BPH350	BPH450	BPH550
⅝"	BPH250	BPH250	BPH350	BPH450	BPH550
¾"	BPH250	BPH350	BPH350	BPH450	BPH550
1"	BPH250	BPH350	BPH350	BPH450	BPH550
1 ¼"	BPH350	BPH350	BPH350	BPH450	BPH550
1 ½"	BPH350	BPH350	BPH450	BPH550	BPH650
2"	BPH350	BPH450	BPH450	BPH550	BPH650
2 ½"	BPH450	BPH450	BPH550	BPH650	BPH850
3"	BPH450	BPH550	BPH550	BPH650	BPH850
3 ½"	BPH550	BPH550	BPH650	BPH850	BPH850
4"	BPH550	BPH650	BPH650	BPH850	BPH850

Sch. 40/80 Pipe	Insulation Thickness				
	½"	¾"	1"	1 ½"	2"
¼"	BPH250	BPH250	BPH350	BPH450	BPH550
⅜"	BPH250	BPH250	BPH350	BPH450	BPH550
½"	BPH250	BPH250	BPH350	BPH450	BPH550
¾"	BPH250	BPH350	BPH350	BPH450	BPH550
1"	BPH250	BPH350	BPH350	BPH450	BPH550
1 ¼"	BPH350	BPH350	BPH450	BPH550	BPH650
1 ½"	BPH350	BPH350	BPH450	BPH550	BPH650
2"	BPH350	BPH450	BPH450	BPH550	BPH650
2 ½"	BPH450	BPH450	BPH550	BPH650	BPH850
3"	BPH450	BPH550	BPH550	BPH650	BPH850
3 ½"	BPH550	BPH550	BPH650	BPH850	BPH850
4"	BPH550	BPH650	BPH650	BPH850	BPH850



# SNAP 'N SHIELD™ pipe supports

Reliable, durable and cost-effective  
way to protect your insulation

## Pipe Support Features

- Fast, easy installation – snaps onto channel
- No tools required
- Snap on design helps eliminate shield movement, helping prevent insulation damage
- Helps protect insulation from damage that can be caused by rubbing against pipes or fittings
- Designed for side-by-side installation
- Meets UL94 HB flammability standards

## Pipe Support Technical Specifications

### Applications:

Strut or trapeze mounted horizontal pipe runs for refrigeration, air conditioning and plumbing

### Material:

Basell Pro-Fax 8523 Polypropylene Copolymer

- UV resistant
- Operating temperature -40° to 178°F
- Paintable (preserves mechanical properties even after painting)
- Non-adhesive surface for linear expansion of thermal insulation

### Certification:

UL classified for USA (UL-723 (ASTM E 84) and ULC listed for Canada (ULC-S102.2).  
Meets UL94 HB flammability standards.

### Available Colors:

Black, white and gray

Black Support Catalog #	White Support Catalog #	Gray Support Catalog #	Nominal Inside Opening	Wt./C
BPS225B	BPS225W	—	2.25"	26
BPS325B	BPS325W	—	3.25"	37
BPS425B	BPS425W	—	4.25"	52
BPS525B	BPS525W	—	5.25"	69
BPS625B	BPS625W	—	6.25"	83
BPS825B	BPS825W	BPS825G	8.25"	103
BPSCB	BPSCW	—	Universal Cover	22

Copper Tubing Size	Insulation Thickness				
	½"	¾"	1"	1 ½"	2"
¼"	BPS225	BPS225	BPS325	BPS425	BPS525
⅜"	BPS225	BPS225	BPS325	BPS425	BPS525
½"	BPS225	BPS225	BPS325	BPS425	BPS525
⅝"	BPS225	BPS325	BPS325	BPS425	BPS525
¾"	BPS225	BPS325	BPS325	BPS425	BPS525
1"	BPS225	BPS325	BPS325	BPS425	BPS525
1 ¼"	BPS325	BPS325	BPS425	BPS525	BPS625
1 ½"	BPS325	BPS325	BPS425	BPS525	BPS625
2"	BPS325	BPS425	BPS425	BPS525	BPS625
2 ½"	BPS425	BPS425	BPS525	BPS625	BPS825
3"	BPS425	BPS525	BPS525	BPS625	BPS825
3 ½"	BPS525	BPS525	BPS625	BPS825	BPS825
4"	BPS525	BPS625	BPS625	BPS825	BPS825

Sch. 40/80 Pipe	Insulation Thickness				
	½"	¾"	1"	1 ½"	2"
¼"	BPS225	BPS225	BPS325	BPS425	BPS525
⅜"	BPS225	BPS225	BPS325	BPS425	BPS525
½"	BPS225	BPS325	BPS325	BPS425	BPS525
¾"	BPS225	BPS325	BPS325	BPS425	BPS525
1"	BPS325	BPS325	BPS425	BPS525	BPS625
1 ¼"	BPS325	BPS325	BPS425	BPS525	BPS625
1 ½"	BPS325	BPS425	BPS425	BPS525	BPS625
2"	BPS425	BPS425	BPS425	BPS525	BPS625
2 ½"	BPS425	BPS525	BPS525	BPS625	BPS825
3"	BPS525	BPS525	BPS625	BPS825	BPS825
3 ½"	BPS525	BPS625	BPS625	BPS825	BPS825
4"	BPS625	BPS625	BPS825	BPS825	BPS825

For more information, visit  
[www.cooperblineline.com/snap-n-shield](http://www.cooperblineline.com/snap-n-shield).

**U.S. Customer Service Center is staffed Monday through Friday from 7 a.m. to 5 p.m. Central Standard Time.**

Eaton's B-Line Business  
509 West Monroe Street  
Highland, IL 62249  
United States  
800-851-7415  
[www.cooperblineline.com/contactus](http://www.cooperblineline.com/contactus)

Eaton's B-Line Business  
5925 McLaughlin Road  
Mississauga, ON L5R 1B8  
Canada  
800-569-3660  
[www.cooperblineline.com/contactca](http://www.cooperblineline.com/contactca)

Eaton's B-Line Business  
PO Box 70160 - Al Khobar - 31952  
Kingdom of Saudi Arabia  
00966 3 812 2236  
[www.cooperblineline.com/contactme](http://www.cooperblineline.com/contactme)

**Eaton**  
1000 Eaton Boulevard  
Cleveland, OH 44122  
United States  
[Eaton.com](http://Eaton.com)

Eaton's B-Line Business  
509 West Monroe Street  
Highland, IL 62249  
[Eaton.com](http://Eaton.com)

© 2014 Eaton  
All Rights Reserved  
Printed in USA  
Publication No. SNSPCS-14  
February 2014

Eaton is a registered trademark.

All other trademarks are property  
of their respective owners.