

Http://www.beckettpumps.com/industrial

VISIT OUR WEBSITE
to place orders, check
pricing & availability,
and receive automated
P.O. confirmation!

BECKETT CORPORATE OFFICE:
3250 N. Skyway Circle
Irving, TX 75038
Tel. 972-871-8000
Fax. 972-871-8888
www.beckettpumps.com



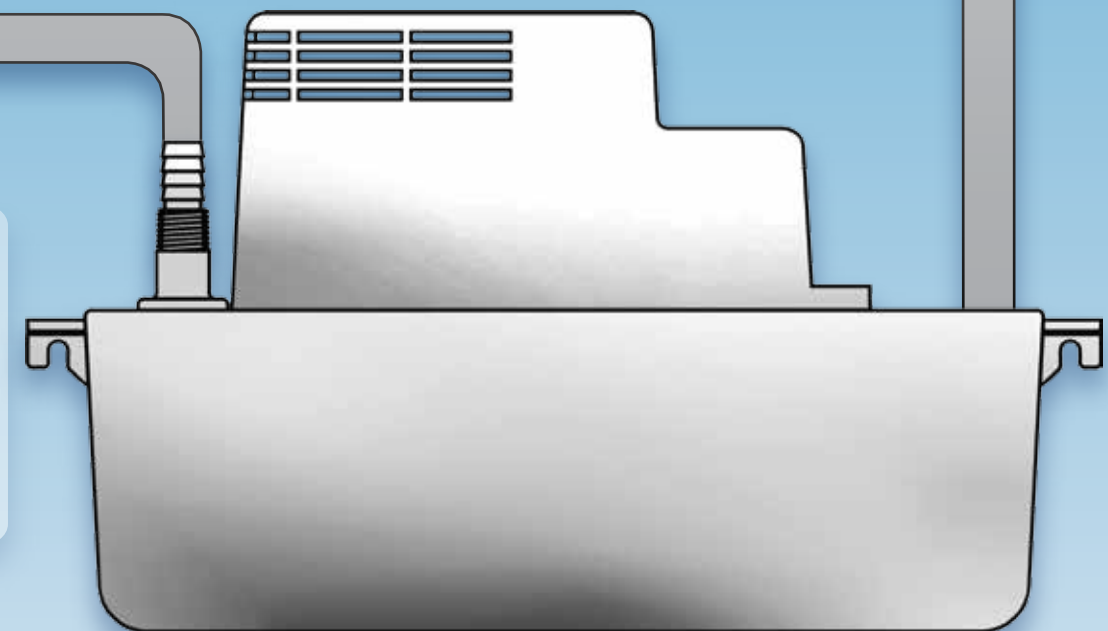
Condensate Pumps

Beckett, the industry leader in condensate/waste water removal, offers a complete list of condensate removal pumps for heating, air conditioning, and refrigeration applications.

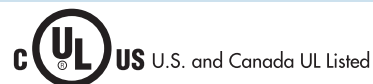
OEM/Custom Pump Design:

For all your custom applications, let Beckett utilize our design and manufacturing expertise to quickly develop a custom product for your business or modify an existing one to fit your specific application.

1947-2017
70
YEARS OF
EXCELLENCE



CB15 and CB20 Series



Beckett's family of medium condensate pumps are designed to meet or exceed your toughest job demands, including high efficiency gas furnaces. This pump is engineered to be user friendly with features like a more reliable micro switch and the ability to mount the pump from either side. It features a larger replaceable Duck-Bill check valve design and convenient discharge with both 3/8" O.D. barb and 1/4" MNPT threads.

Model #	H	W	L	Outlet	Inlet	Volts	Amps	Watts	Gallons per hour @ 60Hz/ Rated Voltage				Safety Switch	Check Valve	6 Ft. Cord w/plug	Tubing	6 Ft. Cord w/plug	Shut Off (Ft.)	Weight Lb. Each
									1'	5'	10'	15'							
CB151UL	6 1/2"	5"	11 1/4"	3/8" O.D.	1.1"	115	0.9	53	125	103	66	-	✓	✓	✓		✓	18'	3.9
CB151LSUL	6 1/2"	5"	11 1/4"	3/8" O.D.	1.1"	115	0.9	53	125	103	66	-		✓	✓		✓	18'	3.9
CB151TUL	6 1/2"	5"	11 1/4"	3/8" O.D.	1.1"	115	0.9	53	125	103	66	-	✓	✓	✓	✓	✓	18'	4.9
CB201UL	6 1/2"	5"	11 1/4"	3/8" O.D.	1.1"	115	1.1	60	115	72	51	20	✓	✓	✓		✓	20'	4.4
CB201LSUL	6 1/2"	5"	11 1/4"	3/8" O.D.	1.1"	115	1.1	60	115	72	51	20		✓	✓		✓	20'	4.4
CB201TUL	6 1/2"	5"	11 1/4"	3/8" O.D.	1.1"	115	1.1	60	115	72	51	20	✓	✓	✓	✓	✓	20'	5.4
CB202TUL	6 1/2"	5"	11 1/4"	3/8" O.D.	1.1"	230	1.1	89	140	118	84	39	✓	✓	✓	✓	✓	20'	5.4
CB202UL	6 1/2"	5"	11 1/4"	3/8" O.D.	1.1"	230	1.1	89	140	118	84	39	✓	✓	✓		✓	20'	4.4

Average Performance

Beckett Automatic Condensate Units Coding Legend:

- 1- 115V 2- 230V
- T- Tubing Included (20 ft. of 3/8 in. I.D.)
- LS- Less Safety

Tank Capacity:

CB15, CB20..... 2.0 US quart (1.9 Liters)



CB15/20

Check Valve Assemblies

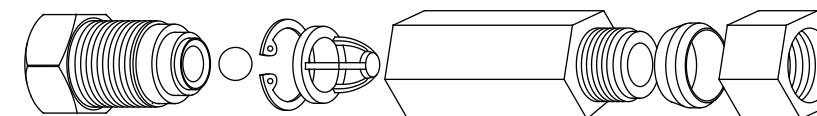
CU7 is the replaceable check valve for CU35, CU45 and CU55. Durable Brass check valve for 3/8 in. tube x 3/8 in. tube compression fitting.



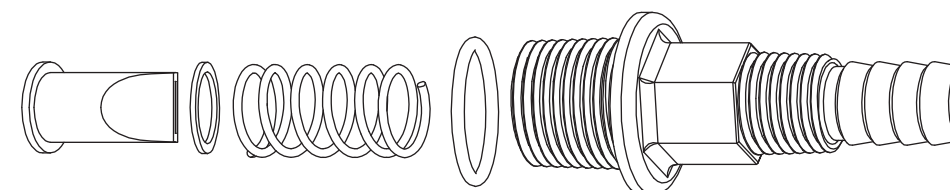
CU8 is the replaceable check valve for CU14, CU19 and CU40. Durable Brass check valve for 1/4 in. MNPT x 3/8 in. tube compression fitting.



RP50 is the replaceable check valve for CB25's and CB50's. The unique basket design imparts much quieter operation in noise sensitive areas. All brass construction with copper adapters for 3/8 in. and 1/2 in. tubing.



CRP1520A is the replaceable check valve kit for: CB15, CB20 and CL20. A modern duck-bill design with barbs for 3/8 in. I.D. tubing and 1/4 in. MNPT threads.



Safety Control Switch

Beckett's easy to use float actuated switch provides a reliable means to safely monitor high water levels. The switch may be wired directly to the system to turn off the air conditioner or furnace equipment, or it can be wired to sound an alarm if the water level becomes too high.

Specifications:

- Single pole, double throw, single break snap action switches
- Silver contacts
- Safe for either AC or DC (low voltage) applications
- Terminals on switches suitable for 0.020 in. x 0.187 in. female spade connection to your wiring harness if desired



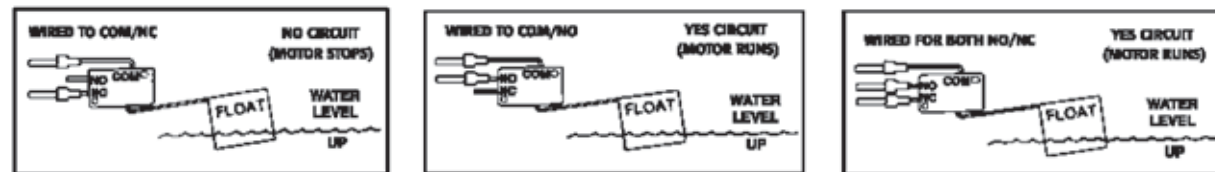
1502S



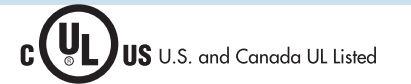
1502C



1502UR



Model #	Volts	Amps	HP	Wired	Activation		Wire Length	Weight Lb. Each
1502C	125-250	10	1/4	Normally Closed	Opens Circuit	No	72 in.	0.2
1502UR	125-250	10	1/4	Normally Closed	Opens Circuit	Yes	17 in.	0.2
1502S	24	5	1/4	Normally Closed	Opens Circuit	Yes	2 leads-72 in., connect to thermostat	0.39



CB50 Series

Beckett's heavy-duty pump series is capable of handling all your industrial applications. Its robust design promotes a more efficient, quieter operation while maintaining product durability. The pump comes with a built-in safety switch, a one gallon tank, replaceable check valve and a pre-wired terminal block. Available in 115V, 230V, and 460V models. All pumps are UL/CUL listed.

Model #	H	W	L	Outlet	Inlet	Volts	Amps	Watts	Gallons per hour @ 60Hz / Rated Voltage							Safety Switch	Check Valve	Shut Off (Ft.)	Weight Lb. Each
									1'	5'	10'	15'	20'	30'	40'				
CB501UL	10 1/8"	6"	12"	1/2" O.D.	1.25"	115	4.0	300	476	441	396	351	306	216	126	✓	✓	50'	13
CB501ULHTS	10 1/8"	6"	12"	1/2" O.D.	1.25"	115	4.0	300	476	441	396	351	306	216	126	✓	✓	50'	13
CB502UL	10 1/8"	6"	12"	1/2" O.D.	1.25"	230	1.9	350	486	453	412	372	337	249	168	✓	✓	50'	13
CB502ULHTS	10 1/8"	6"	12"	1/2" O.D.	1.25"	230	1.9	350	486	453	412	372	337	249	168	✓	✓	50'	13
CB504UL	10 1/8"	6"	12"	1/2" O.D.	1.25"	460	0.8	350	420	380	355	330	310	240	145	✓	✓	50'	13
CB504ULHTS	10 1/8"	6"	12"	1/2" O.D.	1.25"	460	0.8	350	420	380	355	330	310	240	145	✓	✓	50'	13

Average Performance

Beckett Automatic Condensate Units Coding Legend:

1- 115V 2- 230V 4- 460V
HT- High Temperature Unit 212°F Max. Water Temp.

Tank Capacity:

CB25, CB50 1 US gallon (3.785 Liters)



CB50

beckett Condensate Pump

CP65 Series

Beckett's heavy-duty pump series is capable of handling all your high lift industrial applications. It's robust design promotes a more efficient, quieter operation while maintaining product durability. Ideal solution for high lift installations up to 65' lift. Rated for condensate applications with water temperature up to 212° F. Reliable two float design. Hard wired terminal block for professional installation. All pumps are UL/CUL listed.



Model #	H	W	L	Outlet	Inlet	Volts	Amps	Watts	Gallons per hour @ 60Hz / Rated Voltage						Safety Switch	Check Valve	Shut Off (Ft.)	Weight Lb. Each
									1'	10'	20'	30'	40'	50'				
CP651ULHTS	10 1/2"	6"	12"	1/2" O.D.	1.25"	115	3.3	375	476	430	380	330	270	200	✓	✓	65'	14
CP654ULHTS	10 1/2"	6"	12"	1/2" O.D.	1.25"	460	0.89	390	476	430	380	330	270	200	✓	✓	65'	15

Average Performance

Beckett Automatic Condensate Units Coding Legend:

1- 115V 2- 230V 4- 460V
HT- High Temperature Unit 212° F Max. Water Temp.

Tank Capacity:

CP65, CB50, 1 US gallon (3.785 Liters)



CP65

beckett Submersible Pump

Parts Washer Pump

GP210V is ideal for most solvent or aqueous parts washer solutions up to 210GPH @ 1 ft. with a maximum pumping height of 7 ft. This model has a viton shaft seal and a threaded cord exit for mounting in a parts washer.

GP325V is ideal for most solvent or aqueous parts washer solutions up to 340GPH @ 1 ft. with a maximum pumping height of 12 ft. This model has a viton shaft seal and a threaded cord exit for mounting in a parts washer.



UL-UL recognized component

GP210V

GP325V

Model #	H	W	L	Outlet	Inlet	Volts	Amps	Watts	Gallons per hour @ 60Hz / Rated Voltage						Max Lift (ft.)	6 Ft. Cord (No plug)
									1'	2'	4'	6'	8'	10'		
GP210V	3 3/4"	3 1/2"	4 1/2"	1/4" MNPT	SCREEN	115	0.9	50	210	190	137	71	-	-	7	✓
GP210C	3 3/4"	3 1/2"	4 1/2"	1/4" MNPT	SCREEN	230	0.5	40	190	157	93	-	-	-	5	✓
GP325V	5 1/4"	2 1/2"	5 1/4"	1/4" MNPT	SCREEN	115	0.9	50	340	330	300	260	205	135	12	✓
GP325C	5 1/4"	2 1/2"	5"	1/4" MNPT	SCREEN	230	0.5	45	270	260	225	165	120	-	8.5	✓

Average Performance

Direct Drive Pumps

Beckett's submersible pump line offers top of the line epoxy encapsulated (not oil filled) design to meet all your continuous duty requirements. They are low maintenance, environmentally safe, and can be used in a variety of industrial applications. Each pump features a heavy-duty motor for maximum output and reliability. GR models have a rotating discharge and a flow control valve for maximum flexibility.



UL US U.S. and Canada UL Listed

G210A, G325A, G535A

GR210A, GR325A

G600A

Model #	H	W	L	Outlet	Inlet	Volts	Amps	Watts	Gallons per hour @ 115V, 60Hz						Max Lift (ft.)	6 Ft. Cord standard
									1'	2'	4'	6'	8'	10'		
G210A	3 3/4"	3 1/2"	4 1/2"	1/4" MNPT, 1/2" I.D. HOSE	SCREEN	115	0.5	25	210	190	137	71	-	-	7.1	✓
G325A	3 3/4"	4"	5"	1/4" MNPT, 1/2" I.D. HOSE	SCREEN	115	0.8	50	340	325	310	265	205	135	12.2	✓
G535A	4"	4"	5 3/8"	1/2" MNPT, 3/4" I.D. HOSE	SCREEN	115	1.2	75	550	520	450	390	295	210	13	✓
GR210A	3 3/4"	3 1/2"	4 1/4"	1/4" MNPT, 1/2" I.D. HOSE	SCREEN	115	0.5	25	190	172	118	58	-	-	6.8	✓
GR325A	3 3/4"	4"	5"	1/4" MNPT, 1/2" I.D. HOSE	SCREEN	115	0.8	50	287	253	234	183	151	120	11.4	✓
G600A	4"	4"	5 3/8"	1/2" MNPT, 3/4" I.D. HOSE	SCREEN	115	1.2	75	590	530	470	380	295	220	12.2	✓

Average Performance

DESIGNED FOR SUBMERSIBLE USE ONLY!

Universal Ice Machine Replacement Pump

Beckett's ice machine replacement pump meets or exceeds the rigid specifications of original equipment manufacturers. This pump is driven by a thermally protected motor that features dual bearings and a stainless steel shaft. Our BRPAP1 is an all purpose replacement pump that features a dual voltage motor, 5 discharge adapters and 4 impellers – a must-have for every service truck. This pump can be used in the majority of commercial ice makers, such as: Crystal Tips, Ice-O-Matic, Scotsman, Manitowoc, Ross Temp, Carrier, and York.

Model #	HP*	Volts	Discharge O.D.	GPH @ 2 Ft.	RPM	Weight Lbs. Each
BRPAP1	1/30	115/230	1/2" Min.-1" Max.	246-729*	3,000	4.75

*HP for Motor only

*Depends on Impeller/discharge combination
Average Performance

UNIT COMES WITH 4 DIFFERENT IMPELLERS
AND 5 DIFFERENT DISCHARGE SIZES.



1 7/8" impeller not shown

Bottom Intake Direct Drive Pump

Beckett's unique bottom intake G325A6 pump handles continuous duty low water applications with ease. It can pump water as shallow as 0.13". It features our proven direct drive design that is not oil filled along with a low maintenance high torque motor. This model is ideal for a variety of Industrial applications.



G325A6

Model #	H	W	L	Outlet	Inlet	Volts	Amps	Watts	Gallons per hour					Max Lift	6 Ft. Cord w/plug
									1'	2'	4'	6'	8'		
G325A6	4.0"	4.3"	4.8"	1/2" MNPT	Screen, Bottom	115	0.8	50	425	405	342	276	192	11.1'	✓

Average Performance



CB12

Beckett's CB12 size allows easy accessible installation, minimum service with consistent reliability for all your small condensate removal needs. Usable in both the standard HVAC and mini-split markets, this compact pump is uniquely designed to be quiet and can be placed inside the air conditioner, within a ceiling compartment or wall mounted unit. Dual mounting slots on the tank allow for multi-directional placement applications.



CB12

Model #	H	W	L	Outlet	Inlet	Volts	Amps	Watts	Gallons per hour @ 60Hz/ Rated Voltage					Safety Switch	Check Valve	6 Ft. Cord w/plug	Tubing	Hi-Eff. Gas Furn.	Shut Off (Ft.)	Weight Lb. Each
									1'	5'	10'	15'								
CB121UL	5 1/8"	3 1/8"	7 1/2"	3/8" O.D.	1/2"	115	0.5	29	57	36	12	-	✓	✓	✓	NO	✓	12.5'	3.5	

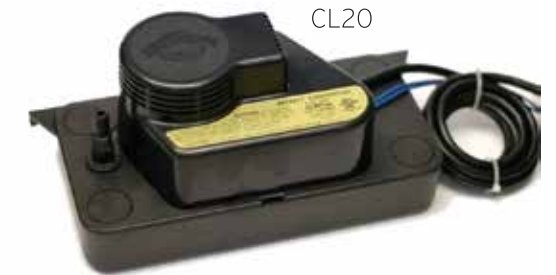
Average Performance

Tank Capacity:

CB12..... 0.1 US quart

CL20 Series

Beckett's compact CL20 has a low profile design that can be used in applications where space is limited. This unit is capable of handling high acidity condensation. The shut off height for the CL20 is 20 ft. This model features high impact ABS tank and a flame retardant plastic cover. Inlets are provided on each end of the tank cover.



CL20

Model #	H	W	L	Outlet	Inlet	Volts	Amps	Watts	Gallons per hour @ 60Hz/ Rated Voltage					Safety Switch	Check Valve	6 Ft. Cord w/plug	Tubing	Shut Off	Weight Lb. Each
									1'	5'	10'	15'	20'						
CL201UL	4 7/8"	5"	11 1/4"	3/8" O.D.	1.1"	115	2.2	100	149	110	92	49	-	✓	✓	✓	NO	20'	4.3
CL202UL	4 7/8"	5"	11 1/4"	3/8" O.D.	1.1"	230	1.1	100	145	108	89	42	-	✓	✓	✓	NO	20'	4.3
CL202ULHT**	4 7/8"	5"	11 1/4"	3/8" O.D.	1.1"	230	1.1	100	145	108	89	42	-	✓	✓	✓	NO	20'	4.3

**High Temp 190°F

Average Performance

Tank Capacity:

CL20 0.85 US quart

CB22 and CB25 Series



Beckett's family of large condensate pumps are ideal for higher volume standard condensate removal application. Each pump operates quietly, efficiently and offers such features as a built-in safety switch and a one gallon tank. All pumps are UL/CUL listed.

Model #	H	W	L	Outlet	Inlet	Volts	Amps	Watts	Gallons per hour @ 60Hz / Rated Voltage				Safety Switch	Check Valve	6 Ft. Cord w/Plug	Shut Off (Ft.)	Weight Lb. Each
									1'	5'	10'	20'					
CB221UL	9 1/4"	6"	12"	3/8" O.D.	1.1"	115	1.5	120	108	90	70	19	✓	✓	✓	22'	6.5
CB251UL	10 1/8"	6"	12"	3/8" O.D.	1.1"	115	1.3	106	108	100	84	40	✓	✓		25'	8.6
CB251ULHT	10 1/8"	6"	12"	3/8" O.D.	1.1"	115	1.3	106	108	100	84	40	✓	✓		25'	8.6
CB252UL	10 1/8"	6"	12"	3/8" O.D.	1.1"	230	0.9	125	108	100	84	40	✓	✓		25'	8.6
CB252ULHT	10 1/8"	6"	12"	3/8" O.D.	1.1"	230	0.9	125	108	100	84	40	✓	✓		25'	8.6

Average Performance

Beckett Automatic Condensate Units Coding Legend:

1- 115V 2- 230V
HT- High Temperature Unit 190°F Max. Water Temp.

Tank Capacity:

CB22, CB25, CB50 1 US gallon (3.785 Liters)



CB22



CB25

MS60

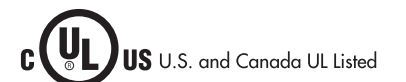
Beckett's Mini Condensate pump is the perfect solution for Mini Split systems up to 36,000 BTU. It features a max lift of 65' along with a max suction lift of 12.9' which allows it to be installed in out of the way locations. It comes with a vibration/sound isolation mounting pad and semi clear condensate reservoir to easily see if maintenance is required. The reservoir features a reliable reed switch with a 5' power cord. No kink silicone discharge tubing (5' - 1/4" ID) is also included. Rated for water temps 41 - 104 F, 50% duty cycle.



Model #	Reservoir			Pump & Pad			Outlet	Volts	Hz	Amps	Watts	Gallons per hour @ rated voltage. Kill 60 Hz			Safety Switch	4'6" Cord w/plug	Shut Off (Ft.)	Weight Lb. Each
	H	W	L	H	W	L						0'	20'	45'				
MS601UL	1.6"	1.5"	4.3"	2.5"	2.8"	3.4"	1/4" I.D. Hose	115	60	0.19	16	3.5	2.3	1.2	✓	✓	65'	1.2
MS602ULC	1.6"	1.5"	4.3"	2.5"	2.8"	3.4"	1/4" I.D. Hose	230	50/60	0.08/0.07	18/15	3.5	2.3	1.2	✓	✓	65'	1.2



IPC13A



Beckett's IPC13A is a totally submersible pump with a built-in, hermetically sealed, pressure activated switch. The pump operates automatically when the water level reaches approximately 1.7 in. and turns off at 0.9 in. Because it is totally submersible this pump may be used in ANY application where automatic control and dependability are required. The compact size, along with high lift and quiet operation of the 13A are well suited for a whole range of consumer and O.E.M. requirements, including condensation removal.

Model #	H	W	L	Outlet	Volts	Amps	Watts	Gallons per hour @ 115V, 60Hz				Safety Switch	Check Valve	6 Ft. Cord w/plug	Shut Off (Ft.)	Weight Lb. Each
								1'	5'	10'	15'					
IPC13A	4"	3 1/8"	8"	3/8" O.D.	115	0.9	55	80	70	45	-	✓	✓	✓	12'	4.2
IPC13AT	4.1"	5"	10.1"	3/8" O.D.	115	0.9	55	80	70	45	-	✓	✓	✓	12'	5

Average Performance

IPC13A



IPC13AT

