

# Series F25

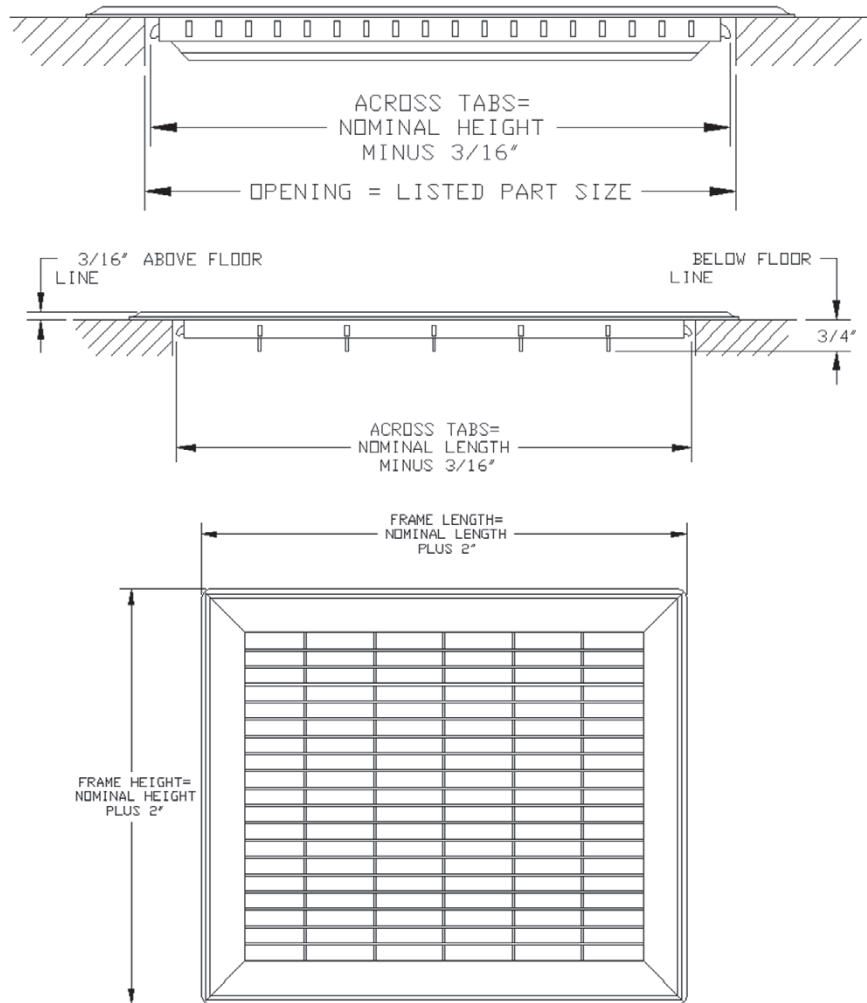
## Bar-faced Floor Grille



- Bar face
- Smooth surface
- Extremely rigid
- Available widths: 4", 6", 8", 9", 10", 12", 14", 16", 18", 20", 24", 26", 28", 30", 32", 36"
- Golden Brown finish
- Made in the U.S.A.

Residential  
Floor & Baseboard

### Dimensional Drawings



## Performance Data, Series F25

Unit Size (in.)	Overall Size (in.)	Face Velocity	300	400	500	600	700	800	900	1000
4 x 8 Ak .174	6 x 10	Cfm	52	69	87	104	122	139	156	174
		Pt	0.004	0.011	0.018	0.025	0.034	0.044	0.056	0.066
4 x 10 Ak .202	6 x 12	Cfm	61	81	101	121	141	162	182	202
		Pt	0.004	0.011	0.018	0.025	0.034	0.044	0.056	0.066
4 x 12 Ak .243	6 x 14	Cfm	73	97	122	146	170	194	219	243
		Pt	0.005	0.011	0.017	0.024	0.033	0.043	0.054	0.065
4 x 14 Ak .284	6 x 16	Cfm	85	114	142	152	199	227	256	284
		Pt	0.006	0.011	0.016	0.023	0.032	0.042	0.052	0.064
4 x 18 Ak .382	6 x 20	Cfm	115	153	191	229	267	306	344	382
		Pt	0.006	0.010	0.015	0.021	0.03	0.039	0.049	0.06
4 x 24 Ak .490	6 x 26	Cfm	147	196	245	294	343	392	441	490
		Pt	0.004	0.009	0.014	0.020	0.028	0.036	0.046	0.057
4 x 30 Ak .614	6 x 32	Cfm	184	246	307	368	430	491	553	614
		Pt	0.004	0.009	0.014	0.019	0.027	0.035	0.043	0.054
6 x 10 Ak .317	8 x 12	Cfm	95	127	159	190	222	254	285	317
		Pt	0.005	0.010	0.016	0.022	0.031	0.041	0.051	0.063
6 x 12 Ak .382	8 x 14	Cfm	115	153	191	229	267	306	344	382
		Pt	0.006	0.010	0.015	0.021	0.03	0.039	0.049	0.06
6 x 14 Ak .447	8 x 16	Cfm	134	179	236	269	313	358	402	447
		Pt	0.006	0.010	0.015	0.020	0.029	0.038	0.047	0.058
6 x 16 Ak .521	8 x 18	Cfm	156	208	261	313	365	417	469	521
		Pt	0.004	0.009	0.014	0.020	0.028	0.036	0.046	0.057
6 x 18 Ak .591	8 x 20	Cfm	177	236	296	355	414	473	532	591
		Pt	0.004	0.009	0.014	0.019	0.027	0.035	0.045	0.056
6 x 20 Ak .706	8 x 22	Cfm	212	282	353	424	494	565	635	706
		Pt	0.004	0.009	0.014	0.019	0.027	0.035	0.043	0.054
6 x 24 Ak .771	8 x 26	Cfm	231	308	386	463	540	617	694	771
		Pt	0.005	0.009	0.013	0.019	0.026	0.033	0.042	0.053
6 x 30 Ak .965	8 x 32	Cfm	290	386	483	579	676	772	869	965
		Pt	0.004	0.008	0.012	0.018	0.024	0.032	0.040	0.049
8 x 8 Ak .349	10 x 10	Cfm	105	140	175	210	245	274	314	349
		Pt	0.003	0.005	0.008	0.010	0.014	0.019	0.023	0.029
8 x 10 Ak .433	10 x 12	Cfm	130	173	217	260	303	346	390	433
		Pt	0.006	0.010	0.015	0.021	0.029	0.038	0.047	0.059
8 x 12 Ak .521	10 x 14	Cfm	183	244	305	365	426	487	548	609
		Pt	0.004	0.009	0.014	0.019	0.027	0.035	0.044	0.055
8 x 14 Ak .609	10 x 16	Cfm	156	208	261	313	365	417	469	521
		Pt	0.004	0.009	0.014	0.020	0.028	0.036	0.046	0.057
8 x 16 Ak .698	10 x 18	Cfm	209	279	349	419	489	558	628	698
		Pt	0.006	0.010	0.015	0.020	0.028	0.037	0.045	0.057
8 x 18 Ak .813	10 x 20	Cfm	244	325	407	488	569	650	732	813
		Pt	0.005	0.009	0.013	0.019	0.026	0.033	0.042	0.053
8 x 20 Ak .874	10 x 22	Cfm	262	350	437	524	612	699	787	874
		Pt	0.004	0.009	0.014	0.019	0.026	0.034	0.042	0.052

## Performance Data, Series F25 (continued)

Unit Size (in.)	Overall Size (in.)	Face Velocity	300	400	500	600	700	800	900	1000
8 x 24 Ak .1051	10 x 26	Cfm	315	420	526	631	736	841	946	1051
		Pt	0.004	0.008	0.012	0.018	0.024	0.031	0.039	0.048
8 x 30 Ak 1.355	10 x 32	Cfm	407	542	678	813	949	1084	1220	1355
		Pt	0.004	0.008	0.012	0.017	0.023	0.030	0.037	0.046
9 x 12 Ak .591	11 x 14	Cfm	177	236	296	355	414	473	532	591
		Pt	0.004	0.009	0.014	0.019	0.027	0.035	0.045	0.056
10 x 10 Ak .554	12 x 12	Cfm	166	222	554	332	388	443	498	554
		Pt	0.002	0.004	0.006	0.009	0.011	0.016	0.020	0.024
10 x 12 Ak .660	12 x 14	Cfm	198	264	330	396	462	528	594	660
		Pt	0.004	0.009	0.014	0.019	0.027	0.035	0.043	0.054
10 x 14 Ak .772	12 x 16	Cfm	232	309	386	463	540	618	695	772
		Pt	0.004	0.009	0.013	0.019	0.026	0.033	0.042	0.053
10 x 16 Ak .874	12 x 18	Cfm	262	350	437	524	612	699	787	874
		Pt	0.004	0.009	0.014	0.019	0.026	0.034	0.042	0.052
10 x 18 Ak .965	12 x 20	Cfm	290	386	483	579	676	772	869	965
		Pt	0.004	0.008	0.012	0.018	0.024	0.032	0.040	0.049
10 x 20 Ak 1.107	12 x 22	Cfm	332	443	554	664	775	886	996	1107
		Pt	0.004	0.008	0.012	0.018	0.024	0.031	0.039	0.048
10 x 24 Ak 1.331	12 x 26	Cfm	399	532	666	799	932	1065	1198	1331
		Pt	0.004	0.008	0.012	0.017	0.023	0.030	0.037	0.046
10 x 30 Ak 1.667	12 x 32	Cfm	500	669	834	1000	1167	1334	1500	1667
		Pt	0.003	0.007	0.011	0.016	0.022	0.029	0.036	0.044
12 x 12 Ak .813	14 x 14	Cfm	244	325	407	488	569	650	732	813
		Pt	0.005	0.009	0.013	0.019	0.026	0.033	0.042	0.053
12 x 14 Ak .949	14 x 16	Cfm	285	380	475	569	664	759	854	949
		Pt	0.004	0.008	0.012	0.018	0.025	0.032	0.041	0.051
12 x 16 Ak 1.051	14 x 18	Cfm	315	420	526	631	736	841	946	1051
		Pt	0.004	0.008	0.012	0.018	0.024	0.031	0.039	0.048
12 x 18 Ak 1.182	14 x 20	Cfm	354	472	592	710	828	956	1064	1182
		Pt	0.004	0.009	0.014	0.019	0.027	0.035	0.045	0.056
12 x 20 Ak 1.355	14 x 22	Cfm	407	542	678	813	949	1084	1220	1355
		Pt	0.004	0.008	0.012	0.017	0.023	0.030	0.037	0.046
12 x 24 Ak 1.626	14 x 26	Cfm	488	650	813	976	1138	1301	1463	1626
		Pt	0.003	0.007	0.011	0.016	0.022	0.029	0.036	0.044
12 x 30 Ak 1.760	14 x 32	Cfm	528	704	880	1056	1232	1408	1584	1760
		Pt	0.003	0.007	0.011	0.015	0.021	0.027	0.034	0.042
14 x 14 Ak 1.051	16 x 16	Cfm	321	428	537	644	736	858	965	1072
		Pt	0.004	0.008	0.012	0.018	0.024	0.031	0.039	0.048
14 x 16 Ak 1.182	16 x 18	Cfm	340	453	568	682	795	918	1021	1135
		Pt	0.004	0.009	0.014	0.019	0.027	0.035	0.045	0.056
14 x 20 Ak 1.544	16 x 22	Cfm	464	618	772	926	1080	1236	1390	1544
		Pt	0.004	0.009	0.014	0.019	0.026	0.033	0.042	0.053
14 x 24 Ak 1.898	16 x 26	Cfm	570	760	950	1138	1228	1518	1708	1898
		Pt	0.004	0.008	0.012	0.018	0.025	0.032	0.041	0.051

Residential  
Floor & Baseboard

## Performance Data, Series F25 (continued)

Unit Size (in.)	Overall Size (in.)	Face Velocity	300	400	500	600	700	800	900	1000
14 x 30 Ak 2.412	16 x 32	Cfm	723	965	1206	1447	1688	1930	2170	2412
		Pt	0.003	0.006	0.009	0.014	0.019	0.025	0.031	0.038
16 x 16 Ak 1.396	18 x 18	Cfm	418	578	698	838	978	1116	1256	1396
		Pt	0.006	0.010	0.015	0.020	0.028	0.037	0.045	0.057
16 x 20 Ak 1.861	18 x 22	Cfm	558	744	931	1117	1303	1489	1675	1861
		Pt	0.003	0.007	0.011	0.015	0.021	0.028	0.035	0.043
16 x 24 Ak 2.102	18 x 26	Cfm	630	840	1052	1262	1472	1682	1892	2102
		Pt	0.004	0.008	0.012	0.018	0.024	0.031	0.039	0.048
16 x 30 Ak 2.71	18 x 32	Cfm	814	1084	1356	1626	1898	2168	2440	2710
		Pt	0.004	0.008	0.012	0.017	0.023	0.030	0.037	0.046
18 x 18 Ak 1.88	20 x 20	Cfm	563	751	940	1128	1316	1504	1692	1880
		Pt	0.003	0.007	0.011	0.015	0.021	0.028	0.035	0.043
18 x 24 Ak 2.364	20 x 26	Cfm	708	944	1184	1420	1656	1912	2128	2364
		Pt	0.004	0.009	0.014	0.019	0.027	0.035	0.045	0.056
18 x 30 Ak 2.64	20 x 32	Cfm	792	1056	1320	1584	1848	2112	2376	2640
		Pt	0.003	0.007	0.011	0.015	0.021	0.027	0.034	0.042
20 x 20 Ak 2.297	22 x 22	Cfm	689	919	1149	1378	1608	1838	2067	2297
		Pt	0.003	0.006	0.009	0.014	0.019	0.025	0.031	0.038
20 x 24 Ak 2.662	22 x 26	Cfm	798	1064	1332	1598	1864	2130	2396	2662
		Pt	0.004	0.008	0.012	0.017	0.023	0.030	0.037	0.046
20 x 30 Ak 3.445	22 x 32	Cfm	1034	1378	1723	2067	2412	2756	3101	3445
		Pt	0.003	0.006	0.010	0.015	0.020	0.025	0.032	0.040
24 x 24 Ak 3.252	26 x 26	Cfm	976	1300	1626	1952	2276	2602	2926	3252
		Pt	0.003	0.007	0.011	0.016	0.022	0.029	0.036	0.044
24 x 30 Ak 3.52	26 x 32	Cfm	1056	1408	1760	2112	2464	2816	3168	3520
		Pt	0.003	0.007	0.011	0.015	0.021	0.027	0.034	0.042
24 x 36 Ak 4.728	26 x 38	Cfm	1416	1888	2368	2840	3312	3824	4256	4728
		Pt	0.004	0.009	0.014	0.019	0.027	0.035	0.045	0.056

Terminal velocity is 50 fpm.