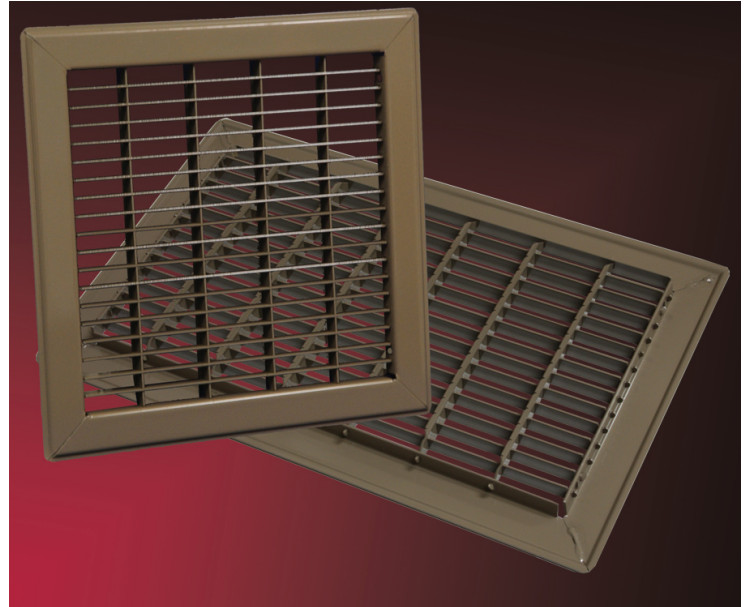


Product Description

Looking for a floor grille that can be used in a residential or commercial application?

Our F25 Floor Grille easily qualifies to be used in a residential or commercial capacity. Anywhere that you will be having a high volume of traffic passing through, our F25 series has the strength of a commercial product, with a range of sizes that cover the traditional “residential” and “commercial” needs.

Our larger, commercial products, have been given extra welds to give it the extra strength to hold up to the higher standards of a commercial product.



Features, Advantages, Benefits

- ❑ Steel construction
- ❑ Bar-Faced
- ❑ Extremely rigid
- ❑ Firm, smooth surface
- ❑ Standard, golden brown finish

Models

Part #	Size and Color	Ctn Qty
F25B0408	4" X 8" Brown	4
F25B0410	4" X 10" Brown	4
F25B0412	4" X 12" Brown	4
F25B0414	4" X 14" Brown	4
F25B0418	4" X 18" Brown	4
F25B0424	4" X 24" Brown	4
F25B0430	4" X 30" Brown	4
F25B0610	6" X 10" Brown	4
F25B0612	6" X 12" Brown	4
F25B0614	6" X 14" Brown	4
F25B0616	6" X 16" Brown	4
F25B0618	6" X 18" Brown	4
F25B0620	6" X 20" Brown	4

Part #	Size and Color	Ctn Qty
F25B0624	6" X 24" Brown	4
F25B0630	6" X 30" Brown	4
F25B0808	8" X 8" Brown	4
F25B0810	8" X 10" Brown	4
F25B0812	8" X 12" Brown	4
F25B0814	8" X 14" Brown	4
F25B0816	8" X 16" Brown	4
F25B0818	8" X 18" Brown	4
F25B0820	8" X 20" Brown	4
F25B0824	8" X 24" Brown	4
F25B0830	8" X 30" Brown	4
F25B0912	9" X 12" Brown	4
F25B1010	10" X 10" Brown	4
F25B1012	10" X 12" Brown	4
F25B1014	10" X 14" Brown	4
F25B1016	10" X 16" Brown	4
F25B1018	10" X 18" Brown	4
F25B1020	10" X 20" Brown	4
F25B1024	10" X 24" Brown	4
F25B1030	10" X 30" Brown	4
F25B1212	12" X 12" Brown	4

Part #	Size and Color	Ctn Qty
F25B1214	12" X 14" Brown	4
F25B1216	12" X 16" Brown	4
F25B1218	12" X 18" Brown	4
F25B1220	12" X 20" Brown	4
F25B1224	12" X 24" Brown	4
F25B1230	12" X 30" Brown	4
F25B1414	14" X 14" Brown	4
F25B1416	14" X 16" Brown	4
F25B1420	14" X 20" Brown	4
F25B1424	14" X 24" Brown	4
F25B1430	14" X 30" Brown	4
F25B1616	16" X 16" Brown	4

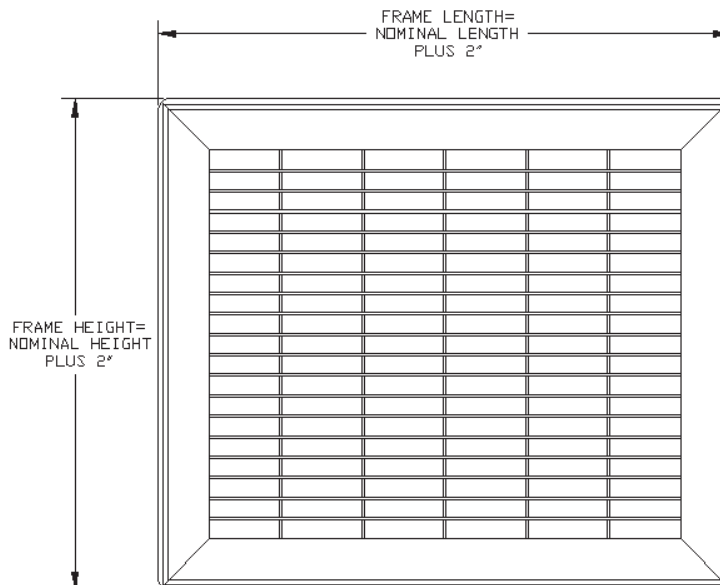
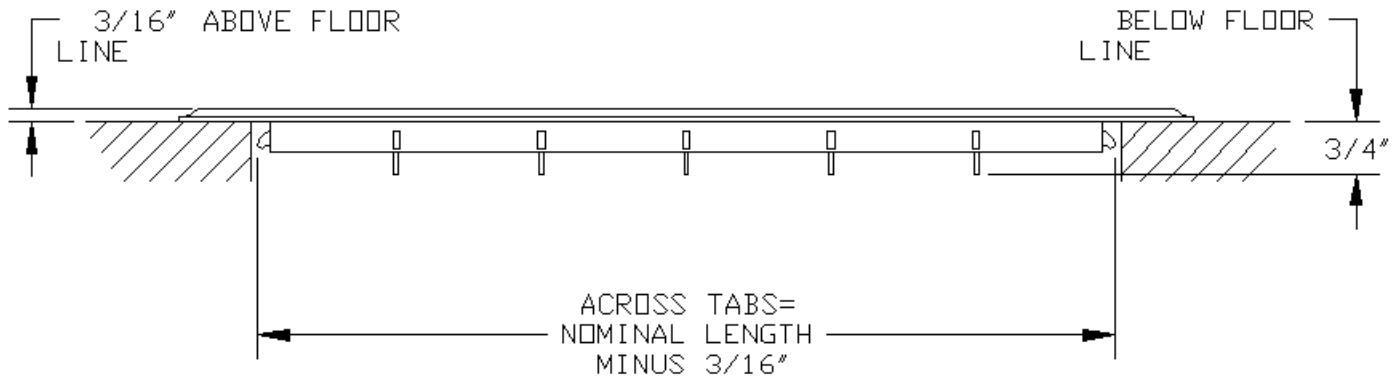
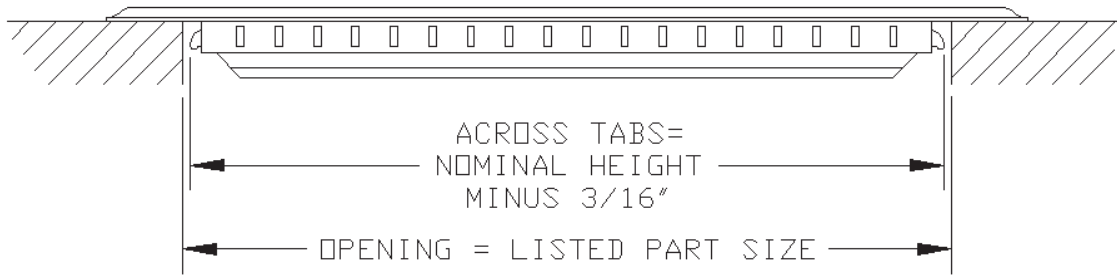
Part #	Size and Color	Ctn Qty
F25B1620	16" X 20" Brown	4
F25B1624	16" X 24" Brown	4
F25B1630	16" X 30" Brown	4
F25B1818	18" X 18" Brown	4
F25B1824	18" X 24" Brown	4
F25B1830	18" X 30" Brown	4
F25B2020	20" X 20" Brown	4
F25B2024	20" X 24" Brown	4
F25B2030	20" X 30" Brown	4
F25B2424	24" X 24" Brown	4
F25B2430	24" X 30" Brown	4
F25B2436	24" X 36" Brown	1

Performance Data

Unit	Overall	Face Velocity	300	400	500	600	700	800	900	1000
Size	Size									
4x10	6" x 12"	Cfm	61	81	101	121	141	162	182	202
Ak 0.202		Pt	0.004	0.011	0.018	0.025	0.034	0.044	0.056	0.066
4x12	6" x 14"	Cfm	73	97	122	146	170	194	219	243
Ak 0.243		Pt	0.005	0.011	0.017	0.024	0.033	0.043	0.054	0.065
4x14	6" x 16"	Cfm	85	114	142	152	199	227	256	284
Ak 0.284		Pt	0.006	0.011	0.016	0.023	0.032	0.042	0.052	0.064
4x24	6" x 26"	Cfm	147	196	245	294	343	392	441	490
Ak 0.490		Pt	0.004	0.009	0.014	0.020	0.028	0.036	0.046	0.057
4x30	6" x 32"	Cfm	184	246	307	368	430	491	553	614
Ak 0.614		Pt	0.004	0.009	0.014	0.019	0.027	0.035	0.043	0.054
6x10	8" x 12"	Cfm	95	127	159	190	222	254	285	317
Ak 0.317		Pt	0.005	0.010	0.016	0.022	0.031	0.041	0.051	0.063
6x12	8" x 14"	Cfm	115	153	191	229	267	306	344	382
Ak 0.382		Pt	0.006	0.010	0.015	0.021	0.03	0.039	0.049	0.06
6x14	8" x 16"	Cfm	134	179	236	269	313	358	402	447
Ak 0.447		Pt	0.006	0.010	0.015	0.020	0.029	0.038	0.047	0.058
6x20	8" x 22"	Cfm	212	282	353	424	494	565	635	706
Ak 0.706		Pt	0.004	0.009	0.014	0.019	0.027	0.035	0.043	0.054
6x24	8" x 26"	Cfm	231	308	386	463	540	617	694	771
Ak 0.771		Pt	0.005	0.009	0.013	0.019	0.026	0.033	0.042	0.053
6x30	8" x 32"	Cfm	290	386	483	579	676	772	869	965
Ak 0.965		Pt	0.004	0.008	0.012	0.018	0.024	0.032	0.040	0.049
8x10	10" x 12"	Cfm	130	173	217	260	303	346	390	433
Ak 0.433		Pt	0.006	0.010	0.015	0.021	0.029	0.038	0.047	0.059
8x12	10" x 14"	Cfm	156	208	261	313	365	417	469	521
Ak 0.521		Pt	0.004	0.009	0.014	0.020	0.028	0.036	0.046	0.057

Unit	Overall	Face Velocity	300	400	500	600	700	800	900	1000
Size	Size									
8x14	10" x 16"	Cfm	183	244	305	365	426	487	548	609
Ak 0.609		Pt	0.004	0.009	0.014	0.019	0.027	0.035	0.044	0.055
8x16	10" x 18"	Cfm	209	279	349	419	489	558	628	698
Ak 0.698		Pt	0.006	0.010	0.015	0.020	0.028	0.037	0.045	0.057
8x20	10" x 22"	Cfm	262	350	437	524	612	699	787	874
Ak 0.874		Pt	0.004	0.009	0.014	0.019	0.026	0.034	0.042	0.052
8x24	10" x 26"	Cfm	315	420	526	631	736	841	946	1051
Ak 1.051		Pt	0.004	0.008	0.012	0.018	0.024	0.031	0.039	0.048
9x12	11" x 14"	Cfm	177	236	296	355	414	473	532	591
Ak 0.591		Pt	0.004	0.009	0.014	0.019	0.027	0.035	0.045	0.056
10x12	12" x 14"	Cfm	198	264	330	396	462	528	594	660
Ak 0.660		Pt	0.004	0.009	0.014	0.019	0.027	0.035	0.043	0.054
10x14	12" x 16"	Cfm	232	309	386	463	540	618	695	772
Ak 0.772		Pt	0.004	0.009	0.013	0.019	0.026	0.033	0.042	0.053
10x20	12" x 22"	Cfm	332	443	554	664	775	886	996	1107
Ak 1.107		Pt	0.004	0.008	0.012	0.018	0.024	0.031	0.039	0.048
10x24	12" x 26"	Cfm	399	532	666	799	932	1065	1198	1331
Ak 1.331		Pt	0.004	0.008	0.012	0.017	0.023	0.030	0.037	0.046
10x30	12" x 32"	Cfm	500	669	834	1000	1167	1334	1500	1667
Ak 1.667		Pt	0.003	0.007	0.011	0.016	0.022	0.029	0.036	0.044
12x12	14" x 14"	Cfm	244	325	407	488	569	650	732	813
Ak 0.813		Pt	0.005	0.009	0.013	0.019	0.026	0.033	0.042	0.053
12x14	14" x 16"	Cfm	285	380	475	569	664	759	854	949
Ak 0.949		Pt	0.004	0.008	0.012	0.018	0.025	0.032	0.041	0.051
12x20	14" x 22"	Cfm	407	542	678	813	949	1084	1220	1355
Ak 1.355		Pt	0.004	0.008	0.012	0.017	0.023	0.030	0.037	0.046
12x24	14" x 26"	Cfm	488	650	813	976	1138	1301	1463	1626
Ak 1.626		Pt	0.003	0.007	0.011	0.016	0.022	0.029	0.036	0.044
12x30	14" x 32"	Cfm	528	704	880	1056	1232	1408	1584	1760
Ak 1.760		Pt	0.003	0.007	0.011	0.015	0.021	0.027	0.034	0.042
16x20	18" x 22"	Cfm	558	744	931	1117	1303	1489	1675	1861
Ak 1.861		Pt	0.003	0.007	0.011	0.015	0.021	0.028	0.035	0.043
20x20	22" x 22"	Cfm	689	919	1149	1378	1608	1838	2067	2297
Ak 2.297		Pt	0.003	0.006	0.009	0.014	0.019	0.025	0.031	0.038
20x30	22" x 32"	Cfm	1034	1378	1723	2067	2412	2756	3101	3445
Ak 3.445		Pt	0.003	0.006	0.010	0.015	0.020	0.025	0.032	0.040

Diagrams



Continental Industries, Inc.
100 West Windsor Avenue
Elkhart, Indiana 46514

Phone: 800.735.5272

Fax: 574.262.2075

Email: info@continentalindustries.com

Web: www.continentalindustries.com