

cps[®]

Smart.Connected.Tools™

ABM-HOOD & ABM-HOOD-200 Owner's Manual



Patented CPS[®]linkSM Wireless Technology

 Bluetooth[®]   **ICES-003**

OVERVIEW

The ABM EasyHood captures air speed values from air supply or return/exhaust vents in residential or commercial buildings, and easily converts that into an airflow (volume) reading. To accomplish this, the ABM EasyHood is used with an ABM-200 Airflow & Environmental Meter (or ABM-100 Airflow Meter) and a smartphone having the latest, free, CPS Link™ app installed.

KEY FEATURES

- Accurate and affordable HVAC airflow measurement
- Use smartphone and CPS Link™ app to display, store and send data (ABM-200)
- Also measures temperature, wet bulb, dew point and relative humidity (ABM-200)
- Easy operation with online guidance and visual instruction

ABM EASYHOOD LAYOUT



PARTS & ACCESSORIES



SPECIFICATIONS

| ABM-HOOD | |
|------------------------------|--|
| Hood Opening | 12" x 12" (.3 m x .3 m) |
| Expansion Hood Opening | 24" x 24" (.6 m x .6 m) |
| Weight (with Expansion Hood) | 4.75 lb (2.15 kg) |
| Hood Size (with Expansion) | 17.75" H x 25" W x 25" D (.45 m x .63 m x .63 m) |

| ABM-HOOD-200 (when used with ABM-200 sensor) | | |
|--|--|------------------|
| Wireless Connection Range | ≤100 ft. (30.5 m) | |
| Airflow Volume (Regular Test) | 0-1200 CFM (0-2,038 M ³ /H) | |
| Airflow Volume (Low Volume) | 7-100 CFM (12-170 M ³ /H) | |
| Velocity (fpm) | Range: 44-12,320 | Accuracy: ±0.5% |
| Pressure (mbar) | Range: 300-1100 | Accuracy: ±0.12% |
| RH Range | Range: 0-85% | Accuracy: ±4% |
| Temperature (Range) | Range: 0 °F to 140 °F (-18 °C to 60 °C) | |
| | Accuracy: ±0.7 °F (0.4 °C) | |
| Calculates Wet Bulb | | ✓ |
| Calculates Dew Point | | ✓ |
| Bluetooth Smart | | ✓ |
| Auto Power Off | No connection or 30 sec after closing app | |
| Battery Type (3.0 V) | Inside ABM-200 (CR2450 Coin Cell, Lithium) | |
| Battery Life | > 500 hrs. | |
| Warranty | 1 Year (including ABM-HOOD) | |

APP DOWNLOAD & SETUP

For use with Apple iPhone (4S or newer), iPad (Generation 3 or newer). All Bluetooth Smart compatible Android phones & tablets with operating system 4.3 (Jelly Bean) or newer.

1. To download CPS Link™ app go to the App Store or Google Play
2. If you have a QR code scanner app on your phone, scan the QR code below to be redirected to the CPS Link app download page (App Store or Google Play).
3. After downloading app, select the CPS Link app on your mobile device.
4. From the main screen, connect to
 - a. ABM_200_XXXXXX
 - b. or ABM_100_XXXXXX
5. For ABM-200 select ABM EASYHOOD



CPS Link™
Download
App Now



Version 4.3 or higher

INSTALL SENSOR

1. If using ABM-200, attach threaded mic jack metal adapter (chrome metal pin recommended) to meter, then plug meter into socket inside control box opening.
2. If using ABM-100, plug meter into socket inside control box opening.

HANDS FREE MOBILE PHONE USE

1. For greater convenience, mount your mobile phone to the adjustable [2-3/8" to 5-5/8" (60 to 90 mm)] spring loaded base.

If using ABM-100, use cable inside smartphone platform and connect to headphone jack on smartphone.



REGULAR TEST [0 TO 1200 CFM (0 TO 2,038 M³/H)]

1. From the ABM EasyHood screen, select **REGULAR TEST**.
2. Place hood over grille to capture airflow readings.
3. App will calculate airflow and other values.
4. When test is done, press **STOP** on mobile device screen.



ABM EasyHood Main Screen



Capture Airflow Readings



5. Press **SAVE** (or **CANCEL**) on screen to end your session.

LOW VOLUME TEST [0 TO 100 CFM (12 TO 170 M³/H)]

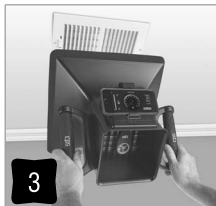
1. Select **LOW VOLUME** from main screen on ABM-EasyHood app
2. Insert low volume adapter plate into **WIDE** portion of Vortex grille (see photo below).
3. Place hood over grille to capture airflow readings
4. App will calculate airflow and other values.
5. When test is done, press **STOP** on mobile device screen.



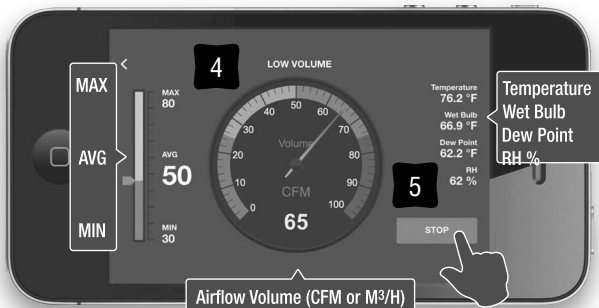
ABM EasyHood Main Screen



Low volume adapter



Capture airflow readings



6. Press **SAVE** (or **CANCEL**) on screen to end your session.

EXPANSION HOOD SETUP (GRILLES UP TO 24" X 24")



TO REPLACE ABM-200 BATTERY

1. Squeeze **BOTH** sides of rubber "skin" and push **UPWARDS** simultaneously.
2. Pull "skin" over **BACK** of the housing to expose coin cell battery compartment



TRIPOD MOUNT

The EasyHood underside contains a 1/4" - 20" threaded metal fitting which may be used for attaching the EasyHood to a tripod.



REPLACEMENT PARTS

ABMHOODX1: Phone Base Door

ABMHOODX2: Rubber Seal

ABMHOODX3: Expansion Base

ABMHOODX4: Extension Fabric

ABMHOODX5: Extension Pole

ABMHOODX6: Low Airflow Plate

WARRANTY

CPS Products, Inc. guarantees that all products are free of manufacturing and material defects to the original owner for one year from the date of purchase. If the equipment should fail during the guarantee period it will be repaired or replaced (at our option) at no charge. This guarantee does not apply to equipment that has been altered, misused or solely in need of field service maintenance. All repaired equipment will carry an independent 90 day warranty. This repair policy does not include equipment that is determined to be beyond economical repair.

LOCATIONS

CPS PRODUCTS, INC. U.S.A.

1010 East 31st Street
Hialeah, Florida 33013 USA
Tel: 305-687-4121,
1-800-277-3808
Fax: 305-687-3743
info@cpsproducts.com
www.cpsproducts.com

CPS PRODUCTS CANADA LTD.

1324 Blundell Road
Mississauga, ON, L4Y 1M5
Tel: 905.615.8620,
Fax: 905.615.9745
info@cpsproducts.com
www.cpsproducts.com

CPS PRODUCTS N.V

Krijgsbaan 241, 2070
Zwijndrecht, Belgium
Tel: (323) 281 30 40
Fax: (323) 281 65 83
info@cpsproducts.be

CPS AUSTRALIA PTY. LTD.

109 Welland Avenue
Welland, South Australia 5007
Tel: +61 8 8340 7055,
Fax: +61 8 8340 7033
sales@cpsaustralia.com.au

To learn more or download latest updates: visit www.cpsproducts.com



#79-114 Rev. B