

LuminIce® Growth Inhibitor Ice Machine Accessory

Installation, Operation and Maintenance Manual



Safety Notices

Safety Notices

Read these precautions to prevent personal injury:

- Read this manual thoroughly before operating, installing or performing maintenance on the equipment. Failure to follow instructions in this manual can cause property damage, injury or death.
- Routine adjustments and maintenance procedures outlined in this manual are not covered by the warranty.
- Proper installation, care and maintenance are essential for maximum performance and trouble-free operation of your equipment.
Visit our website www.manitowocice.com for manual updates, translations, or contact information for service agents in your area.
- This equipment contains high voltage electricity and refrigerant charge. Installation and repairs are to be performed by properly trained technicians aware of the dangers of dealing with high voltage electricity and refrigerant under pressure. The technician must also be certified in proper refrigerant handling and servicing procedures. All lockout and tag out procedures must be followed when working on this equipment.
- This equipment is intended for indoor use only. Do not install or operate this equipment in outdoor areas.

Warning

Follow these electrical requirements during installation of this equipment.

- All field wiring must conform to all applicable codes of the authority having jurisdiction. It is the responsibility of the end user to provide the disconnect means to satisfy local codes. Refer to rating plate for proper voltage.
- This appliance must be grounded.
- This equipment must be positioned so that the plug is accessible unless other means for disconnection from the power supply (e.g., circuit breaker or disconnect switch) is provided.
- Check all wiring connections, including factory terminals, before operation. Connections can become loose during shipment and installation.

Warning

Follow these precautions to prevent personal injury during installation of this equipment:

- Installation must comply with all applicable equipment fire and health codes with the authority having jurisdiction.
- Objects placed or dropped in the bin can affect human health and safety. Locate and remove any objects immediately.
- To avoid instability the installation area must be capable of supporting the combined weight of the equipment and product. Additionally the equipment must be level side to side and front to back.
- Ice machines require a deflector when installed on an ice storage bin. Prior to using a non-OEM ice storage system with this ice machine, contact the bin manufacturer to assure their ice deflector is compatible.
- Do not damage the refrigeration circuit when installing, maintaining or servicing the unit.
- When using cleaning fluids or chemicals, rubber gloves and eye protection (and/or face shield) must be worn.

DANGER

Do not operate equipment that has been misused, abused, neglected, damaged, or altered/modified from that of original manufactured specifications. This appliance is not intended for use by persons (including children) with reduced physical, sensory or mental capabilities, or lack of experience and knowledge, unless they have been given supervision concerning use of the appliance by a person responsible for their safety. Do not allow children to play with, clean or maintain this appliance without proper supervision.

⚠ DANGER

Follow these precautions to prevent personal injury during use and maintenance of this equipment:

- It is the responsibility of the equipment owner to perform a Personal Protective Equipment Hazard Assessment to ensure adequate protection during maintenance procedures.
- Do Not Store Or Use Gasoline Or Other Flammable Vapors Or Liquids In The Vicinity Of This Or Any Other Appliance. Never use flammable oil soaked cloths or combustible cleaning solutions for cleaning.
- All covers and access panels must be in place and properly secured, when operating this equipment.
- Risk of fire/shock. All minimum clearances must be maintained. Do not obstruct vents or openings.
- Failure to disconnect power at the main power supply disconnect could result in serious injury or death. The power switch DOES NOT disconnect all incoming power.
- All utility connections and fixtures must be maintained in accordance with the authority having jurisdiction.
- Turn off and lockout all utilities (gas, electric, water) according to approved practices during maintenance or servicing.
- Units with two power cords must be plugged into individual branch circuits. During movement, cleaning or repair, it is necessary to unplug both power cords.
- Never use a high-pressure water jet for cleaning the interior or exterior of this unit. Do not use power cleaning equipment, steel wool, scrapers or wire brushes on stainless steel or painted surfaces.
- Two or more people are required to move this equipment to prevent tipping.
- Locking the front casters after moving is the owner's and operator's responsibility. When casters are installed, the mass of this unit will allow it to move uncontrolled on an inclined surface. These units must be tethered/secured to comply with all applicable codes.
- The on-site supervisor is responsible for ensuring that operators are made aware of the inherent dangers of operating this equipment.
- Do not operate any appliance with a damaged cord or plug. All repairs must be performed by a qualified service company.

Table of Contents

Safety Notices

Safety Notices	3
----------------------	---

Section 1

General Information

Compatible Ice Machine Models	7
Indigo Models.....	7
U Models.....	7
LuminIce®	7
LuminIce® Kits.....	7
LuminIce® Replacement Bulbs	7
Remote LED Indicator	7
Before You Begin Installation	7

Section 2

Installation

LuminIce® Installation Ice Beverage (IB) Single Evaporator Models	9
LuminIce® Installation 22" & 30" Wide Single Evaporator Models	10
LuminIce® Installation 48" Wide Single Evaporator Models	13
LuminIce® Installation Two-Evaporator Ice Machines	15
LuminIce® Installation NEO (U Models)	17

Section 3

Maintenance

Replacement Bulb Usage.....	21
LuminIce® II Indicator Lights	21
Bulb Replacement Frequency	21
LuminIce® Reminder Setup for Indigo Model Ice Machines.....	21
Bulb Replacement	21
Cleanup Procedure for Accidental Bulb Breakage	23
Before Cleanup.....	23
During Cleanup.....	23
After Cleanup.....	23
Cleanup Steps for Hard Surfaces.....	24
Cleanup Steps for Carpeting or Rugs.....	24
Future Cleaning of Carpeting or Rugs	25

THIS PAGE INTENTIONALLY LEFT BLANK

Section 1

General Information

Compatible Ice Machine Models

This manual covers installation of LuminIce® & LuminIce® II models on the ice machines listed below.

INDIGO MODELS

- Self-contained air-cooled models
- Self-contained water-cooled models
- Remote condenser air-cooled models
- QuietQube remote condensing unit models

U MODELS

- Self-contained air-cooled models
- Self-contained water-cooled models

LuminIce®

The LuminIce® growth inhibitor recirculates the air in the ice machine foodzone over a UV bulb. This process will inhibit the growth of common micro-organisms on all exposed foodzone surfaces.

- LuminIce® bulbs require replacement on a yearly basis. Although the bulb will still illuminate after 12 months, the effectiveness of the bulb diminishes as operational hours increase. To retain maximum effectiveness, replace the bulb on a 12 month schedule.
- LuminIce® II has an indicator light that will illuminate red when the bulb needs replacement. A remote LED is available as an accessory (K00455) to allow the reminder to be viewed without removing the ice machine panels.
- Indigo control boards can be set to automatically display a reminder after 12 months. Refer to Section 3 LuminIce® setup procedure for full details.

LuminIce® Kits

Ice Machine	LuminIce II	LuminIce
22" & 30" Single Evaporator i0300 through i1000	K00450	K00424
48" or Dual Evaporator	K00451	K00434
U Model Undercounter	K00452	K00440

LuminIce® Replacement Bulbs

NOTE: Bulbs are not interchangeable between models.

Model	Replacement Bulb
LuminIce® II	K00454
LuminIce®	K00425

Remote LED Indicator

Model	Remote LED Indicator
LuminIce® II	K00455

The remote LED indicator is for use with LuminIce® II only and will not function with LuminIce®. The remote indicator plugs into the LuminIce® II and includes a bracket that allows placement of the LED anywhere on the side wall for easy viewing.

Before You Begin Installation

Remove all packing material and inspect the equipment for concealed shipping damage. If damage is found, notify the shipper immediately.

LuminIce® and LuminIce® II are for use on Indigo or U model ice machines and are not compatible with previous series ice machines.

THIS PAGE INTENTIONALLY LEFT BLANK

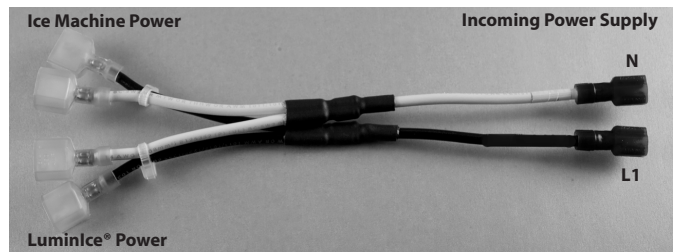
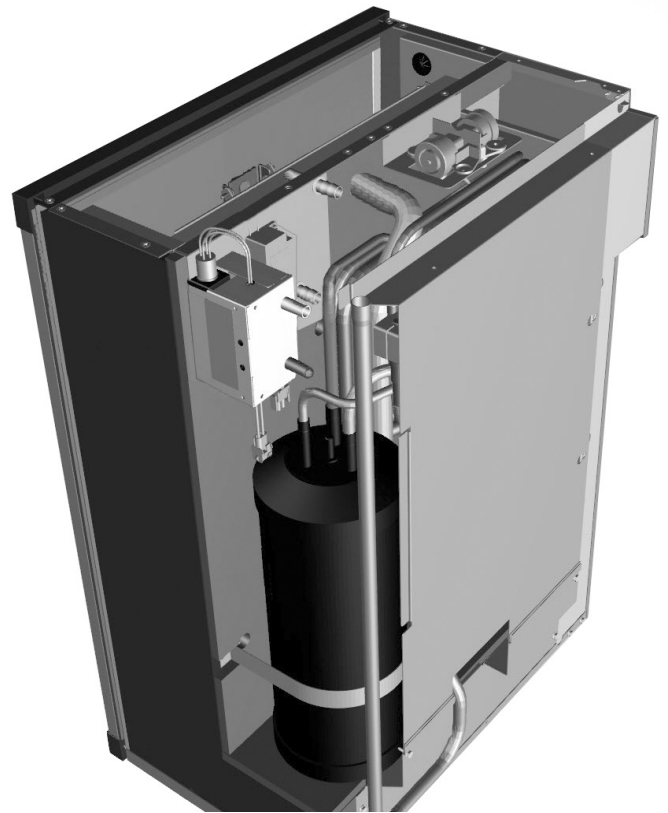
Section 2 Installation

LuminIce® Installation Ice Beverage (IB) Single Evaporator Models

⚠ Warning

Disconnect power to ice machine at the electrical disconnect. Pressing the power button does not disconnect line voltage.

1. Disconnect all power to the ice machine at the electrical disconnect.
2. Install tubing adapters into bulkhead:
 - Remove dust cover from top of evaporator to expose space between the evaporator and bulkhead.
 - Remove and discard plastic caps to allow installation of tubing adapters.
 - Install the longer tubing adapter in the upper evaporator compartment bulkhead location.
 - Install the shorter tubing adapter in the lower evaporator compartment bulkhead location.
3. Mount the LuminIce® and transformer to the mounting bracket.
 - Mount the components on the opposite side of the bracket lip. The bracket lip will slide between the top rail and insulation when mounted.
 - LuminIce® - The bulb and bulb wiring must face up to allow bulb replacement with the LuminIce® in place. Mount the LuminIce® on the left side of the bracket.
 - Transformer - Mount the transformer to the right of the LuminIce®.
4. Install mounting plate in ice machine and secure with fasteners. The mounting plate has pass-through holes for the hose adapters.
5. Route transformer line voltage wires (black and white) along the evaporator bulkhead and through the line voltage Heyco fitting. Disconnect L1 and N wires and install L1 and N of wiring adapter to the incoming power supply wires. Connect removed wires and LuminIce® wires to adapter. Bundle and secure any excess line voltage wire near the transformer.



6. Route transformer low voltage wiring (black and yellow wires) to the LuminIce®. Snap the wire harness connectors together. Bundle and secure any excess low voltage wires near the transformer.

7. Cut the LuminIce® hose to length and attach:

NOTE: The upper bulkhead adapter connects to the upper connector on the LuminIce® and the lower bulkhead adapter connects to the lower LuminIce® connector.

- Insert tubing onto the lower bulkhead adapter and dry fit to establish length, then cut to fit. Attach to LuminIce® and secure with snap clamp.
 - Insert tubing onto the upper bulkhead adapter and dry fit to establish length, then cut to fit. Attach to LuminIce® and secure with snap clamp.
 - Reinstall the evaporator dust cover.
8. Test run:
 - Install all panels except the front panel.
 - Restore power - The LuminIce® is energized whenever power is applied to the ice machine. A noticeable draft and a discharge of photoplasma will be emitted from the upper hose adapter during operation.

LuminIce® Installation 22" & 30" Wide Single Evaporator Models

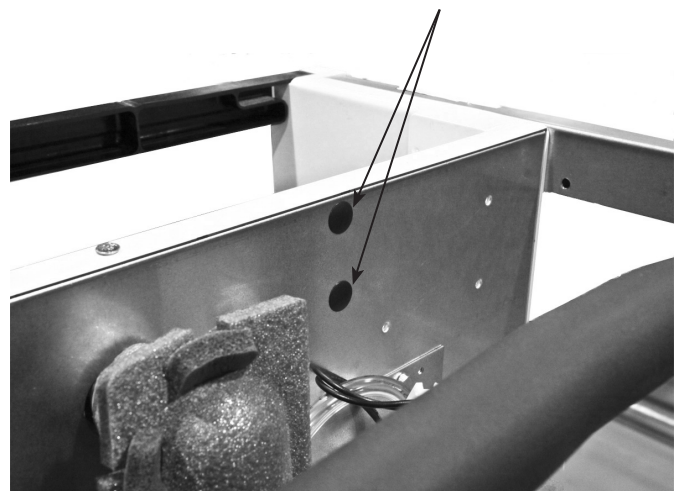
⚠ Warning

Disconnect power to ice machine at the electrical disconnect. Pressing the power button does not disconnect line voltage.

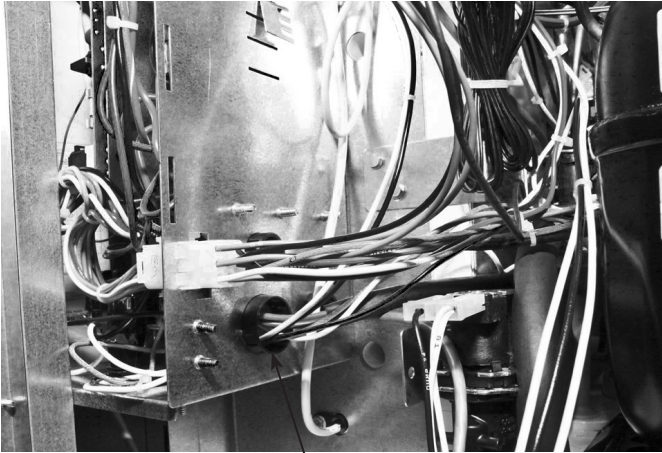
1. Disconnect all power to the ice machine at the electrical disconnect.
2. To allow access for LuminIce® tubing, the evaporator dust cover and plastic caps in the evaporator and compressor compartment bulkhead wall must be removed and discarded.



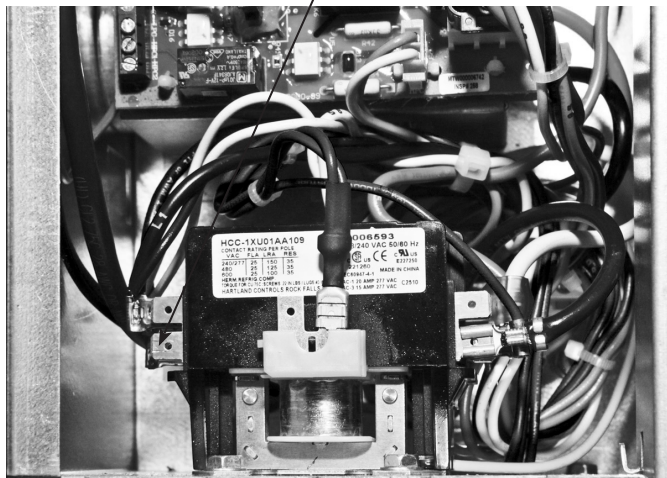
Remove Plastic Caps From Bulkhead In The Evaporator And Compressor Compartment



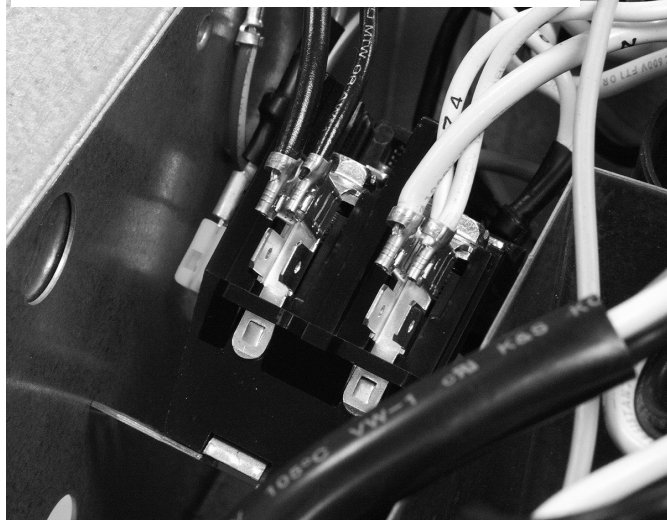
- Route line voltage wires (black and white) through line voltage Heyco fitting and attach to L1 and L2 contactor terminals.



Route Through Line Voltage Heyco and Attach to Contactor Terminals

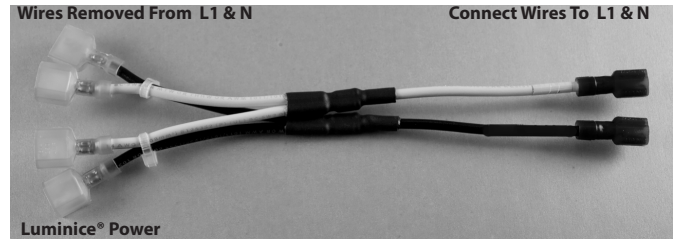


22" Models - Connect Line Voltage to bottom Terminals of L1 & L2



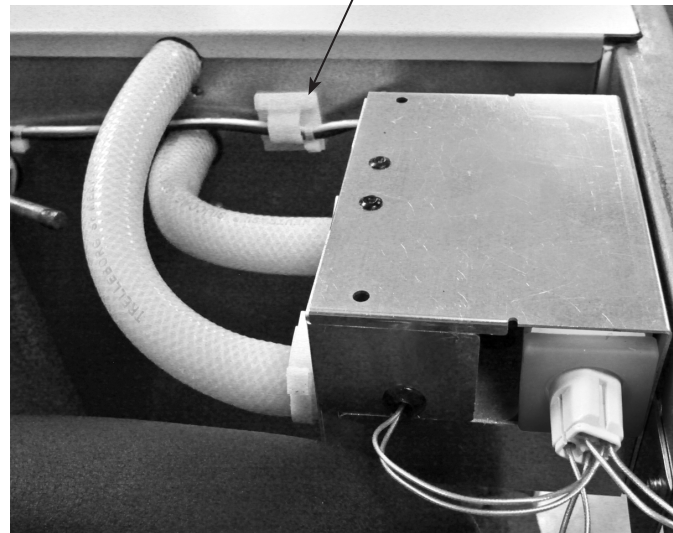
QuietQube Model Line Voltage Wiring

QuietQube models do not have a contactor. Disconnect L1 and N wires and install L1 and N of wiring adapter to the incoming power supply wires. Connect removed wires and LuminIce® wires to adapter.



- Route low voltage wiring (black and yellow wires) to the LuminIce®. Install wire clip and route wires close to evaporator bulkhead to assure harness is away from any moving parts, then snap wire harness connectors together.
- Refer to picture and install LuminIce® hoses.

Install wire clip and route wires along evaporator bulkhead.



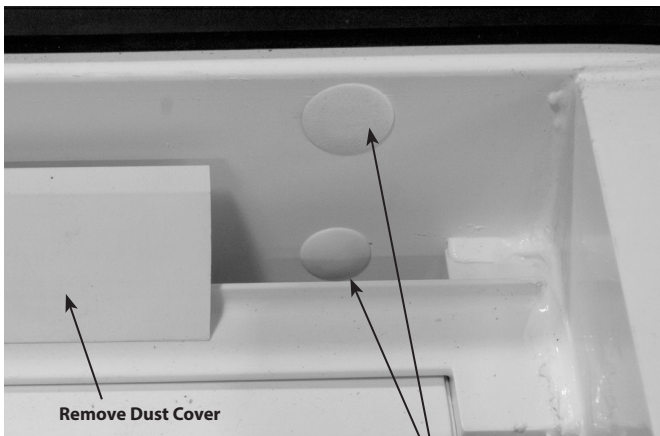
- Install the notched evaporator dust cover from kit and test run the ice machine and LuminIce®. The LuminIce® is energized whenever power is applied to the ice machine.

LuminIce® Installation 48" Wide Single Evaporator Models

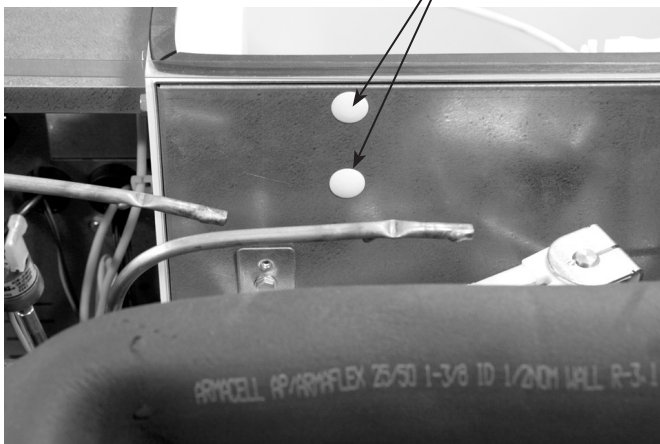
⚠ Warning

Disconnect power to ice machine at the electrical disconnect. Pressing the power button does not disconnect line voltage.

1. Disconnect all power to the ice machine at the electrical disconnect.
2. To allow access for LuminIce® tubing, the evaporator dust cover and plastic caps in the evaporator and compressor compartment bulkhead wall must be removed and discarded. Remove the evaporator dust cover to access lower cap.



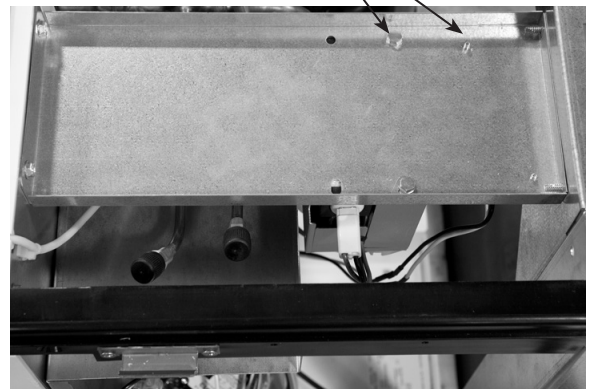
Remove Plastic Caps From Bulkhead In The Evaporator And Compressor Compartment



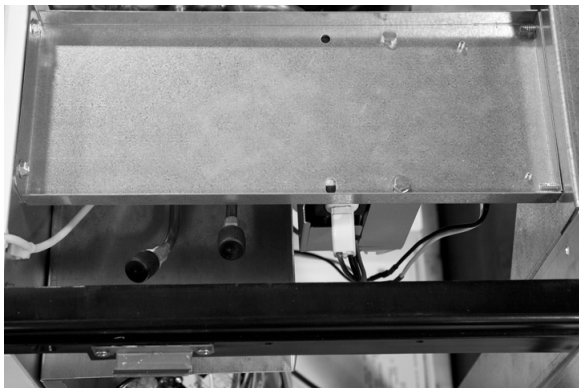
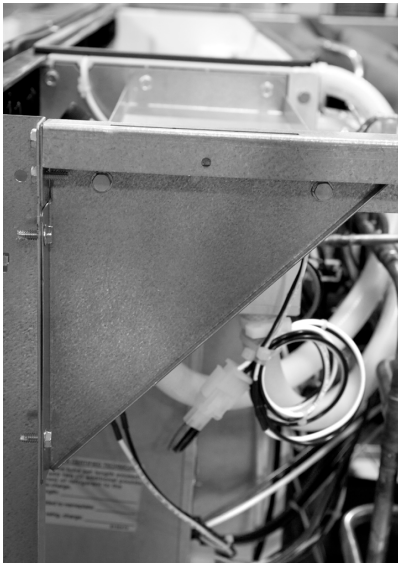
3. Remove bracket from ice machine and assemble LuminIce® and transformer to bracket. Attach tubing and secure with hose clamps.



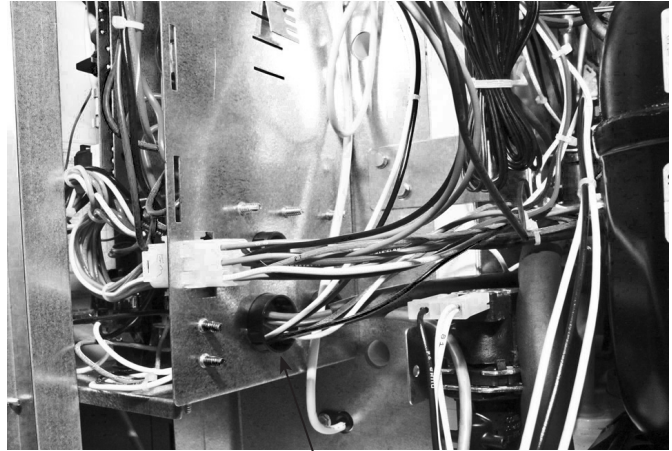
Mount LuminIce® and Transformer To Bracket



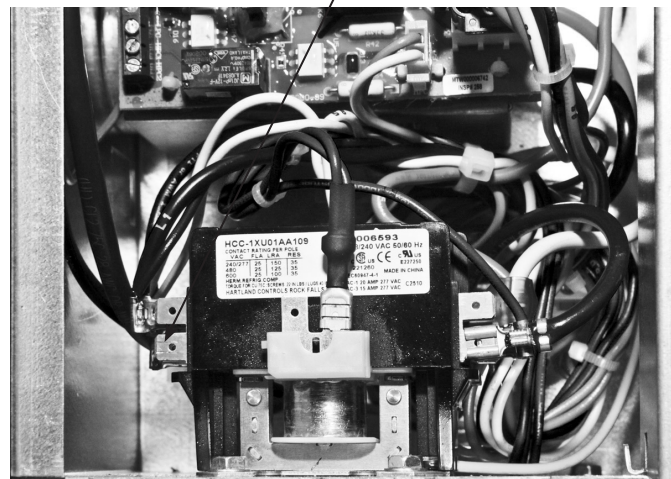
4. Assemble bracket to ice machine.



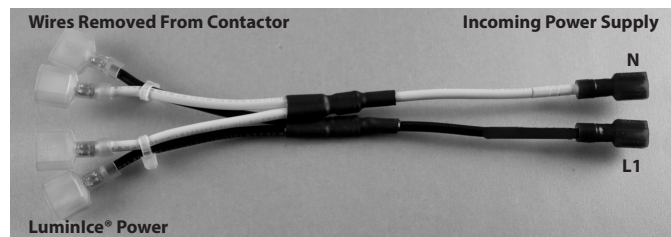
5. Route line voltage wires (black and white) through line voltage Heyco fitting and attach to L1 and L2 contactor terminals.



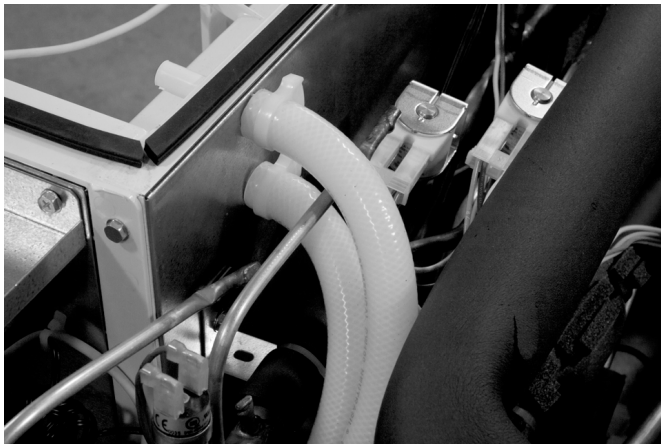
Route Through Line Voltage Heyco and Attach to Contactor Terminals



NOTE: Three phase models do not have open terminals on contactor. Remove two wires from contactor, install supplied electrical connector and connect wires.



6. Route LuminIce® hoses to evaporator and attach.
 - Insert hose closest to the control box in the bottom evaporator bulkhead hole.
 - Insert the other hose in the upper evaporator bulkhead hole.



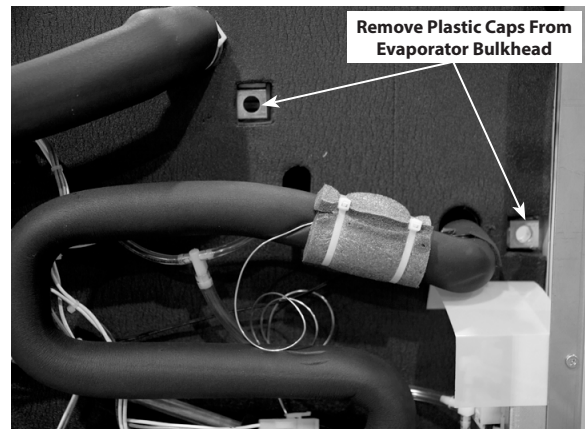
7. Install the evaporator dust cover and test run the ice machine and LuminIce®. The LuminIce® is energized whenever power is applied to the ice machine.

LuminIce® Installation Two-Evaporator Ice Machines

⚠ Warning

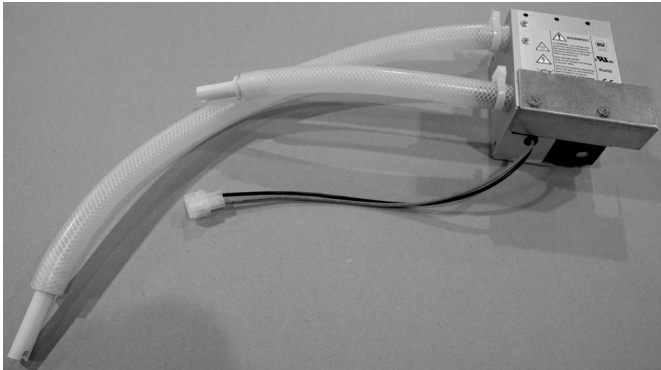
Disconnect power to ice machine at the electrical disconnect. Pressing the power button does not disconnect line voltage.

1. Disconnect all power to the ice machine at the electrical disconnect.
2. To allow access for LuminIce® tubing, the plastic caps in the evaporator compartment bulkhead wall must be removed and discarded. Cap located behind evaporator will fall into the water trough. Remove water trough to retrieve cap, then discard.



3. Cut hose to length.
 - Cut one hose 8" (20 cm) long.
 - Cut one hose 18" (46 cm) long.
4. Assemble LuminIce®.
 - Assemble LuminIce® to bracket.
 - Install tubing and secure with hose clamps.
 - Insert a tubing adapter into each hose.

NOTE: The bulb and bulb wiring must face toward the top of the ice machine to allow bulb replacement with LuminIce® in place.



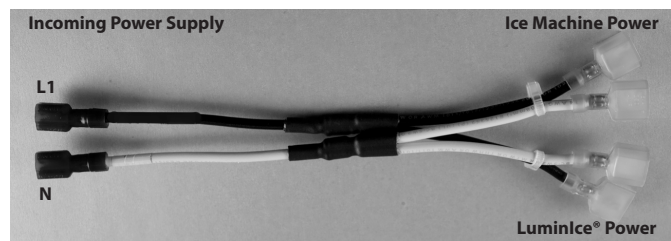
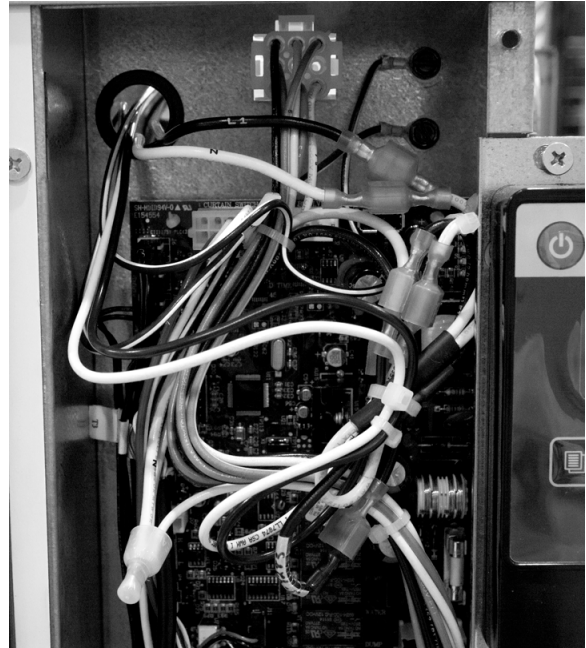
5. Attach LuminIce® assembly to corner post with two screws.



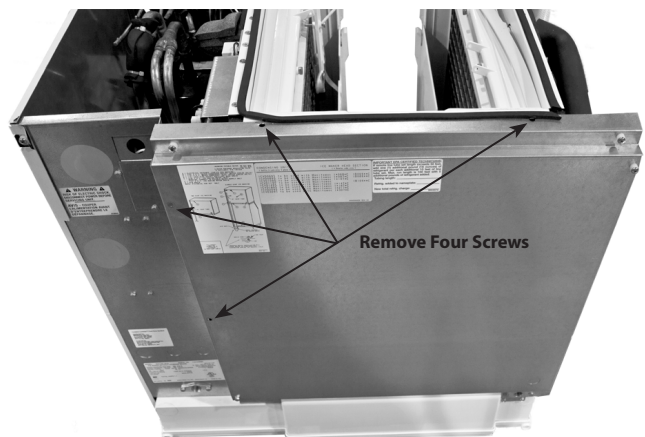
6. Mount transformer to evaporator bulkhead.



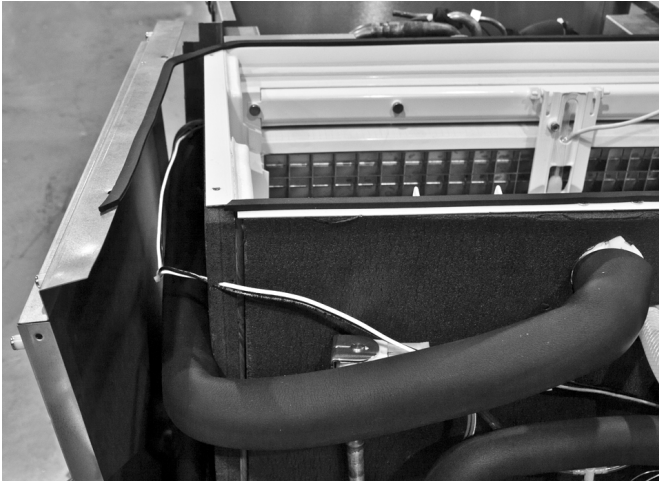
7. Route line voltage wires (black and white) through line voltage Heyco fitting. Disconnect L1 and N wires and install L1 and N of wiring adapter to the incoming power supply wires. Connect removed wires and LuminIce® wires to adapter.



8. Remove four screws to allow access for low voltage wire routing.



9. Route low voltage wiring (black and yellow wires) to the LuminIce®, and snap wire harness connectors together. Reinstall screws removed in previous step.



10. Refer to picture and install LuminIce® hoses.



LuminIce® Installation NEO (U Models)

⚠ Warning

Disconnect power to ice machine at the electrical disconnect. Pressing the power button does not disconnect line voltage.

1. Disconnect all power to the ice machine at the electrical disconnect.
2. Remove any ice from the bin, then remove bin to allow easier access.
 - A. On the rear of the ice machine, remove 2 screws that secure the top cover, then remove the top cover.
 - B. Remove two screws from the front grill, then pull forward to remove grill.
 - C. Remove bin drain on left side of ice machine.
 - D. Rotate the latches on the left and right side of the base to release the bin.

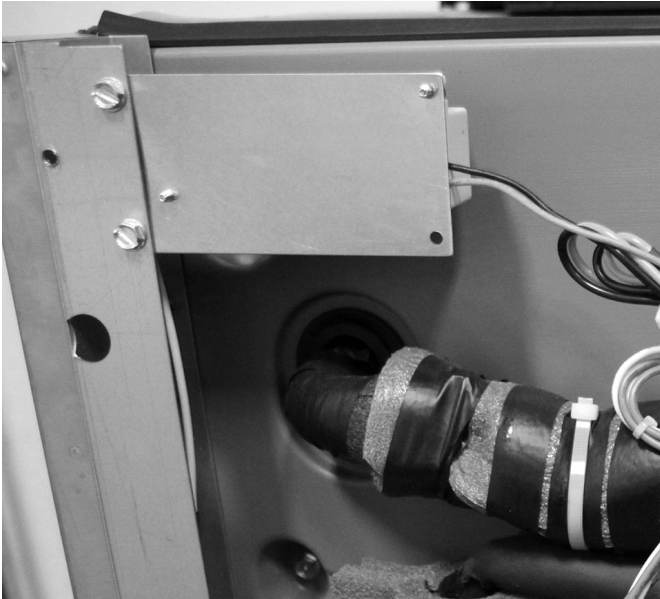
Rotate latch on left and right side and disconnect drain



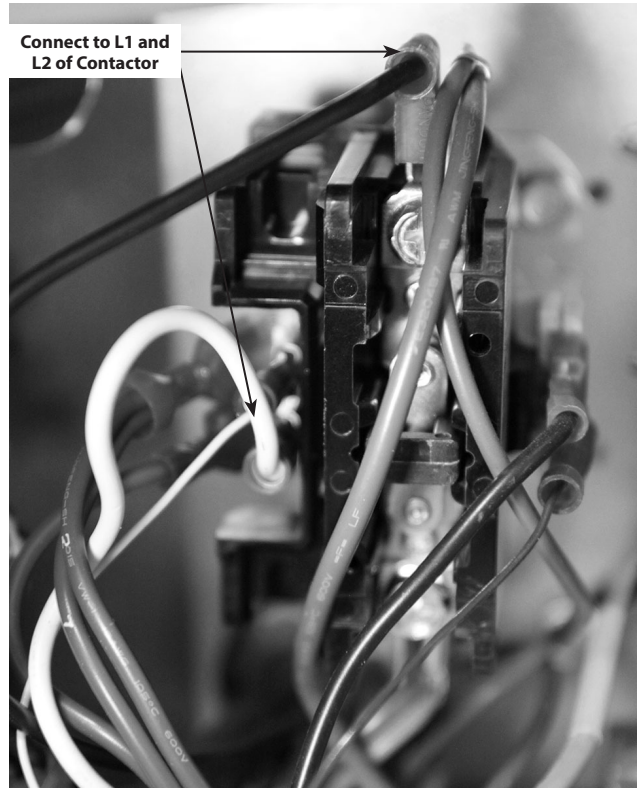
- E. Disconnect the control pad wiring on the right side from the control box.
- F. Slide the bin forward and remove.

3. Mount transformer on the left side with two screws.

NOTE: Clearance holes for mounting LuminIce® are factory installed. U0140 transformer mounts vertically. All other models mount horizontally.



4. Route and secure line voltage wires (black and white) with the power cord. Wires must enter control box through line voltage Heyco fitting and attach to L1 and L2 contactor terminals.

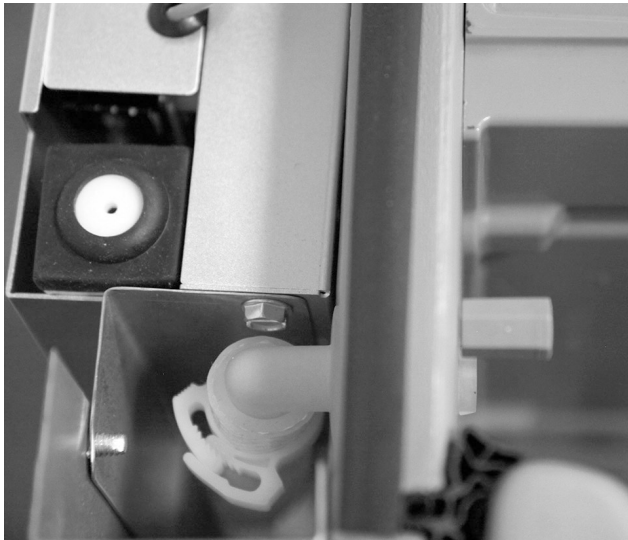


5. To allow access for LuminIce® tubing, the plastic caps in the bulkhead wall must be removed and discarded. The cap located behind the evaporator will fall into the water trough. Remove water trough to retrieve, then discard cap and reinstall the water trough.

6. Assemble bracket, hoses and wires to LuminIce® module.
 - Short hose will route to access hole behind the evaporator. Attach 90 degree elbow to one end and attach other end to LuminIce®.
 - Long hose will route to the access hole above the float switches. Attach 90 degree elbow to one end and attach other end to LuminIce®.
 - Route low voltage wiring (black and yellow wires) to the LuminIce® module and snap wire harness connectors together.



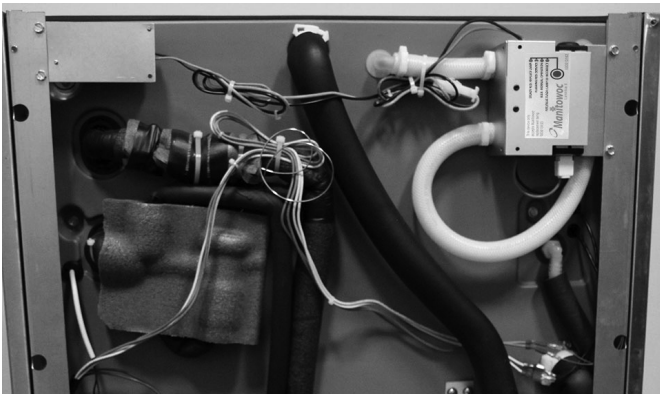
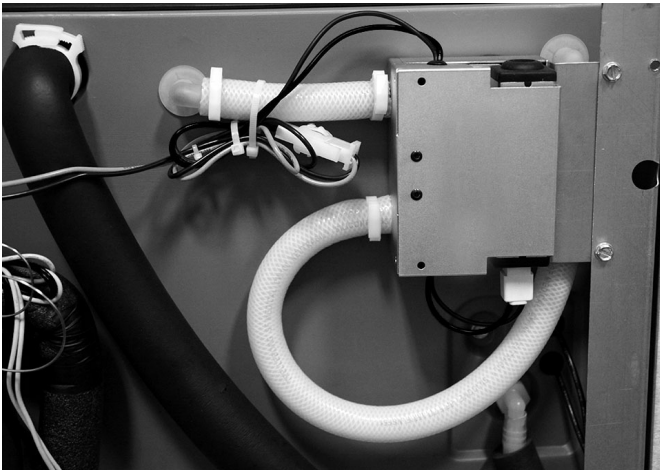
- Attach both hoses to the bulkhead by pressing in place.



7. Mount LuminIce® to ice machine with 2 screws.



- Secure excess wire to LuminIce® tubing.



- Reinstall bin, wire connectors and all panels, then test run.

Section 3 Maintenance

Replacement Bulb Usage

Replacement bulbs are not interchangeable between LuminIce® and LuminIce® II.

- LuminIce® replacement bulb - K00425
- LuminIce® II replacement bulb - K00454

LUMINICE® II INDICATOR LIGHTS

LuminIce® II has an LED light for status indication:

- Steady red light = Replace bulb
- Flashing red light = Service is required
- Blue = Normal operation
- Red/Blue flash = Incorrect replacement bulb has been installed.

Bulb Replacement Frequency

LuminIce® and LuminIce® II bulbs require replacement on a yearly basis. Although the bulb will still illuminate after 12 months, the effectiveness of the bulb diminishes as operational hours increase. To retain maximum effectiveness, replace the bulb on a 12 month schedule.

LuminIce® II has an indicator light that will illuminate red when the bulb needs replacement. A remote LED is available as an accessory (K00455) to allow all indicators (including the reminder) to be viewed without removing the ice machine panels.

LuminIce® Reminder Setup for Indigo Model Ice Machines

Perform the procedure below to display a change-bulb reminder every 12 months. Complete display panel navigation is available in the Indigo® ice machine Installation, Operation and Maintenance Manual. Publications for all Manitowoc equipment are available on our website www.manitowocice.com.

1. From the Set-Up menu, use the Down arrow to highlight LuminIce®.
2. Press the Checkmark. On this screen, you can choose to turn the reminder to AUTO or OFF by highlighting your choice and pressing the Checkmark. Selecting one will deselect the other.
3. When the check reflects your preference, use the Down arrow to navigate to Exit and press the Checkmark. The display will return to the Set-Up menu.

Bulb Replacement

Warning

Disconnect power to ice machine at the electrical disconnect. Pressing the power button does not disconnect line voltage.

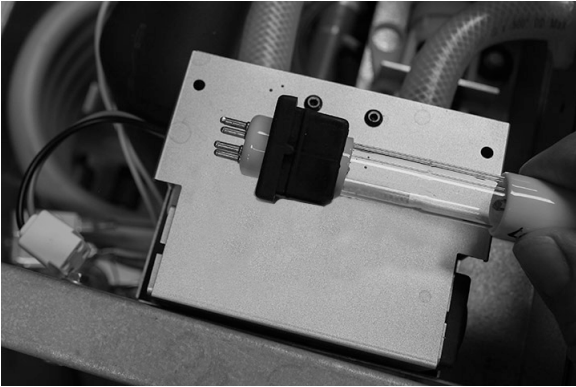
1. Disconnect all power to the ice machine at the electrical disconnect.
2. Open the front door of the ice machine and then remove the top panel.
3. Disconnect the power connector from the LuminIce® bulb.



4. Push bulb with finger and pull with other hand toward the rear of the ice machine until bulb is free.



5. Remove retainer from old bulb and install on replacement bulb.



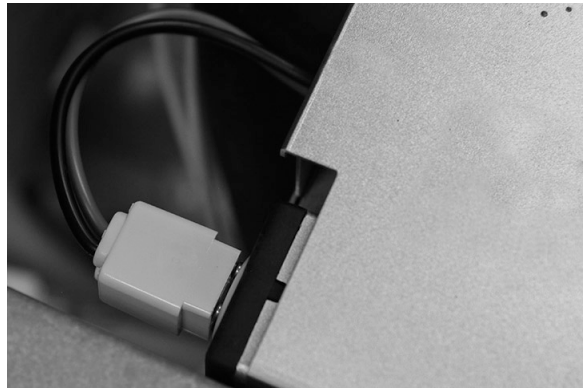
6. Align slot on LuminIce® and notch on retainer and install replacement bulb in LuminIce®.



7. Insert bulb until it seats in the retainer stop on the opposite end.



8. Attach connector to bulb.



9. Reinstall panels and reapply power - The LuminIce® is energized whenever power is applied to the ice machine.
10. Dispose of the old bulb - The bulb contains mercury, like other fluorescent and CFL bulbs, and is disposed in the same manner. Refer to www2.epa.gov/cfl for information on recycling requirements and locations in your area.



QR Code to www2.epa.gov/cfl

Cleanup Procedure for Accidental Bulb Breakage

The cleanup procedure is identical to the procedure used to clean up compact fluorescent (CFL) or fluorescent tube lights. These lights contain a small amount of mercury sealed within a glass tube. Breaking these types of lights will release mercury and mercury vapor. The broken bulb can continue to release mercury vapor until it is cleaned up and removed.

To minimize exposure to mercury vapor, the EPA (Environmental Protection Agency) recommends the following cleanup and disposal steps.

This cleanup guidance represents the minimum actions recommended to clean up a broken light containing mercury, and will be updated if the EPA identifies more effective cleanup practices.

The latest EPA procedures can be viewed on their website at www.epa.gov/cfl/cflcleanup.html.

BEFORE CLEANUP

- Have people and pets leave the room, and avoid the breakage area on the way out.
- Open a window or door to the outdoors and leave the room open for 5 - 10 minutes.
- Shut off the central forced air heating/air conditioning (H&AC) system.
- Collect materials you will need to clean up the broken bulb:
 - A. Stiff paper or cardboard
 - B. Sticky tape (e.g., duct tape)
 - C. Damp paper towels or disposable wet wipes (for hard surfaces)
 - D. Glass jar with a metal lid (such as a canning jar) or a seal-able plastic bag(s)

DURING CLEANUP

- Be thorough in collecting broken glass and visible powder.
- Place cleanup materials in a sealable container.

AFTER CLEANUP

- Promptly place all bulb debris and cleanup materials outdoors in a trash container or protected area until materials can be disposed of properly. Avoid leaving any bulb fragments or cleanup materials indoors.
- If practical, continue to air out the room where the bulb was broken and leave the heating/air conditioning system shut off for several hours.

Cleanup Steps for Hard Surfaces

1. Carefully scoop up glass fragments and powder using stiff paper or cardboard and place debris and paper/cardboard in a glass jar with a metal lid. If a glass jar is not available, use a sealable plastic bag.

NOTE: Since a plastic bag will not prevent the mercury vapor from escaping, remove the plastic bag(s) from the home after cleanup.

2. Use sticky tape, such as duct tape, to pick up any remaining small glass fragments and powder. Place the used tape in the glass jar or plastic bag.
3. Wipe the area clean with damp paper towels or disposable wet wipes. Place the towels in the glass jar or plastic bag.

NOTE: Vacuuming of hard surfaces during cleanup is not recommended unless broken glass remains after all other cleanup steps have been taken. It is possible that vacuuming could spread mercury containing powder or mercury vapor, although available information on this problem is limited.

If vacuuming is needed to ensure removal of all broken glass, keep the following tips in mind:

- Keep a window or door to the outdoors open.
- Vacuum the area where the bulb was broken using the vacuum hose, if available; and remove the vacuum bag (or empty and wipe the canister) and seal the bag/vacuum debris, and any materials used to clean the vacuum, in a plastic bag.
- Promptly place all bulb debris and cleanup materials, including vacuum cleaner bags, outdoors in a trash container or protected area until materials can be disposed of properly.
- Check with your local or state government about disposal requirements in your area. Some states and communities require fluorescent bulbs (broken or unbroken) be taken to a local recycling center.
- Wash your hands with soap and water after disposing of the jars or plastic bags containing bulb debris and cleanup materials.
- Continue to air out the room where the bulb was broken and leave the H&AC system shut off, as practical, for several hours.

Cleanup Steps for Carpeting or Rugs

1. Carefully scoop up glass fragments and powder using stiff paper or cardboard and place debris and paper/cardboard in a glass jar with a metal lid. If a glass jar is not available, use a sealable plastic bag.

NOTE: Since a plastic bag will not prevent the mercury vapor from escaping, remove the plastic bag(s) from the home after cleanup.

2. Use sticky tape, such as duct tape, to pick up any remaining small glass fragments and powder. Place the used tape in the glass jar or plastic bag.

NOTE: Vacuuming of hard surfaces during cleanup is not recommended unless broken glass remains after all other cleanup steps have been taken. It is possible that vacuuming could spread mercury containing powder or mercury vapor, although available information on this problem is limited.

If vacuuming is needed to ensure removal of all broken glass, keep the following tips in mind:

- Keep a window or door to the outdoors open.
- Vacuum the area where the bulb was broken using the vacuum hose, if available; and remove the vacuum bag (or empty and wipe the canister) and seal the bag/vacuum debris, and any materials used to clean the vacuum, in a plastic bag.
- Promptly place all bulb debris and cleanup materials, including vacuum cleaner bags, outdoors in a trash container or protected area until materials can be disposed of properly.
- Check with your local or state government about disposal requirements in your area. Some states and communities require fluorescent bulbs (broken or unbroken) be taken to a local recycling center.
- Wash your hands with soap and water after disposing of the jars or plastic bags containing bulb debris and cleanup materials.
- Continue to air out the room where the bulb was broken and leave the H&AC system shut off, as practical, for several hours.

FUTURE CLEANING OF CARPETING OR RUGS

1. Air Out the Room During and After Vacuuming.
2. The next several times you vacuum the rug or carpet:
 - A. Shut off the H&AC system.
 - B. Close the doors to other rooms.
 - C. Open a window or door to the outside before vacuuming.
 - D. Change the vacuum bag after each use in this area.

NOTE: After vacuuming is completed, keep the H&AC system shut off and the window or door to the outside open, as practical, for several hours.

THIS PAGE INTENTIONALLY LEFT BLANK



MANITOWOC FOODSERVICE – ICE MACHINE DIVISION
2110 SOUTH 26TH STREET, MANITOWOC, WI 54220

800-545-5720
WWW.MANITOWOCICE.COM

Every new piece of Manitowoc Foodservice equipment comes with KitchenCare™ and you choose the level of service that meets your operational needs from one restaurant to multiple locations.

StarCare – Warranty & lifetime service, certified OEM parts, global parts inventory, performance audited

ExtraCare – CareCode, 24/7 Support, online/mobile product information

LifeCare – Install & equipment orientation, planned maintenance, KitchenConnect™, MenuConnect

Talk with KitchenCare™ • 1-844-724-CARE • www.mtwkitchencare.com



To learn how Manitowoc Foodservice and its leading brands can equip you, visit our global web site at www.manitowocfoodservice.com, then discover the regional or local resources available to you.

