

MITCHELL



2014 Catalog: 50814

PIPE

FITTINGS

VENTING

DUCT

19250 Highway 12 East • P.O. Box 789

Kosciusko, Mississippi 39090

Phone: 662.289.7110 • Toll Free: 800.258.6137 • Fax: 662.289.7112

www.mitchellmetal.net



OUR COMMITMENT TO YOU

Founded in 1924 as a small town Mississippi company, Mitchell Metal Products, Inc. quickly established itself as a familiar name in the building industry. Today, Mitchell Metal remains a constant fixture in the industry as a privately-held, family-owned manufacturer of high-quality HVAC sheet metal products.

With over nine decades and three generations of experience in the manufacturing industry, Mitchell Metal knows metal. We assure you, the customer, of the best quality Single-Wall, Type B-Vent, Drain Pans, Plenums and custom metal products on the market.

Our products are made with galvanized steel ranging from 30 to 22 gauge, stainless steel and aluminum.

Items throughout this catalog are Mitchell Metal's standard HVAC products. Our standard products represent only a fraction of the items we manufacture, as our knowledgeable staff are able to accommodate our customers' many requests for custom-made items.

WE PROVIDE OUR CUSTOMERS WITH...

- High-quality products
- Superior customer service
- On-time delivery
- Competitive prices

We invite you to visit our website, compare our products and talk to our customers about our services. You'll see what we've done, what we're doing and how we can serve you now. Call us to speak directly with one of our friendly staff members.

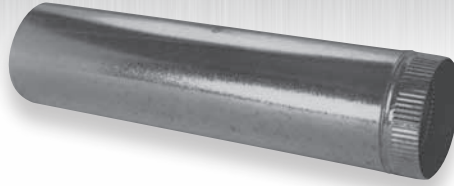
Sincerely,
Mitchell Metal Products, Inc.



TABLE of CONTENTS

PIPE.....	2
ELBOWS.....	2
FLEX DUCT.....	2
ANGLES.....	2
WYES.....	3
REDUCERS.....	3
TEES.....	3
TEE CAPS.....	3
DUCTBOARD STARTING COLLARS.....	4
METAL STARTING COLLARS.....	4
AIRTITE TAKE-OFFS, CONICAL AIRTITES, TAKE-OFFS FOR ROUND PIPE.....	5
DAMPERS.....	5
VENTING PRODUCTS.....	6
CAPS AND FLASHINGS.....	7
INSULATED BOXES.....	8
BOOT RAILS.....	8
DUCT BOARD INSULATED BOXES.....	9
CEILING RADIATION BOXES.....	9
RECTANGULAR DUCT ACCESSORIES.....	10
WALL STACK AND FITTINGS.....	11
STACK BOOTS.....	11
TRUNK DUCT.....	12
CEILING BOXES / REGISTER BOOTS.....	13-14
RECTANGULAR TAKE-OFF FOR METAL.....	15
RECTANGULAR TAKE-OFF FOR DUCTBOARD.....	15
MISCELLANEOUS ITEMS.....	16

PIPE



105 GALVANIZED SNAPLOCK PIPE

Sizes and Lengths Available:
3" through 12" - 5' lengths 50' per bundle - 30 gauge
14" through 20" - 3' lengths 30' per bundle - 28 gauge
26 gauge and 24 gauge available upon request

FLEX DUCT



130 ALUMINUM FLEXIBLE DUCT

Sizes and Lengths Available:
3" through 18" - 8' & 10' lengths
No connection attached - can be compressed

ELBOWS



205 90° GALVANIZED ADJUSTABLE ELBOW

Packed in Donuts:
Sizes and Lengths Available:
3" through 10" - packed 12 per bundle
12" through 20" - packed 4 per bundle
Packed Boxed:
Sizes 4" through 10" - 12 per box

ANGLES



215 45° GALVANIZED ANGLE

Sizes 3" through 20" available

WYES • REDUCERS • TEES



305 STUB WYE



306 FREE FLOW WYE



307 BULLHEAD WYE



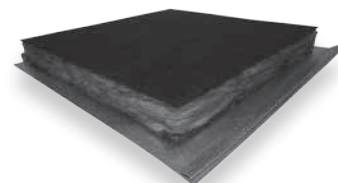
308-C INSULATED END CAP
Available in R6 and R8



308-I ASSEMBLED INSULATED WYE
Available in R6 and R8



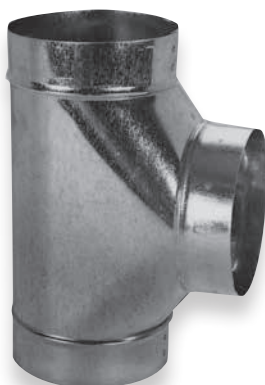
308-P UNASSEMBLED INSULATED SIDE PANEL
Available in R6 and R8



308-SQ INSULATED SQUARE WYE CAP
Available in R6 and R8



310 REDUCERS



320 TEE



330 TEE CAP

DUCTBOARD STARTING COLLARS



350 DUCTBOARD STARTING COLLAR (R6)

355 WITH DAMPER (R6)

348 DUCTBOARD STARTING COLLAR (R8)

349 WITH DAMPER (R8)



3520C SAFETY TAB STARTING COLLAR (R6)

3520CS SEALED SAFETY TAB STARTING COLLAR (R6)

35280C SAFETY TAB STARTING COLLAR (R8)



370 DUCTBOARD SPIN-IN STARTING COLLAR

375 WITH DAMPER

390 WITH SCOOP

395 WITH SCOOP AND DAMPER

METAL STARTING COLLARS



340 METAL TAB COLLAR

345 WITH DAMPER



360 METAL SPIN-IN STARTING COLLAR

365 WITH DAMPER

380 WITH SCOOP

385 WITH SCOOP AND DAMPER



386 CONICAL SPIN-IN

387 WITH SCOOP

388 WITH DAMPER

389 WITH SCOOP AND DAMPER



916 FLEX CONNECTOR

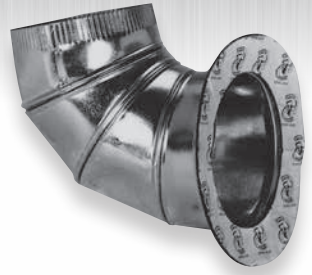
ALL METAL AND DUCTBOARD STARTING COLLARS ARE AVAILABLE WITH:

- ECONOMY STANDOFF
- RAISED DIAL QUADRANT
- RAISED DIAL QUADRANT WITH CONTINUOUS ROD

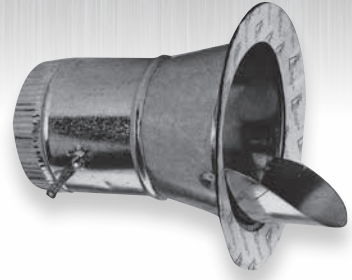
AIRTITE TAKE-OFFS & CONICAL AIRTITE



396 AT
397 ATD
399S ATS
399 ATSD

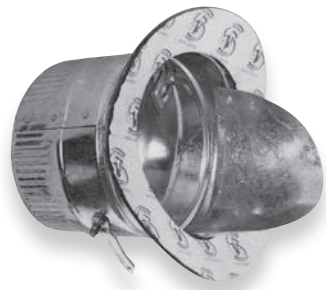


398 AT 90°



CONICAL AIRTITE
327 ATC
328 ATCD
329 ATCS
331 ATCSD

AIRTITE TAKE-OFFS FOR ROUND PIPE

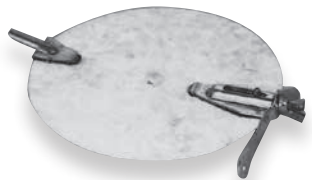


396R ATR
397R ATRD
399RS ATRS
399R ATRSD

AT = AIRTITE
S = SCOOP
D = DAMPER
C = CONICAL
R = ROUND PIPE
90 = ELBOW

ALSO AVAILABLE WITH ECONOMY
STANDOFF, RAISED DIAL QUADRANT,
OR RAISED DIAL QUADRANT WITH
CONTINUOUS ROD

DAMPERS

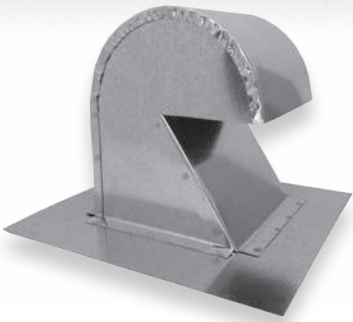


915 REGULAR DAMPER



935 INLINE DAMPER

VENTING PRODUCTS



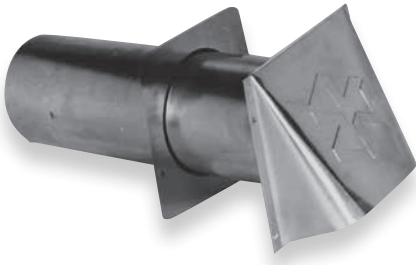
410 FLORIDA GOOSENECK FLASHING
411 FLORIDA GOOSENECK FLASHING
with damper



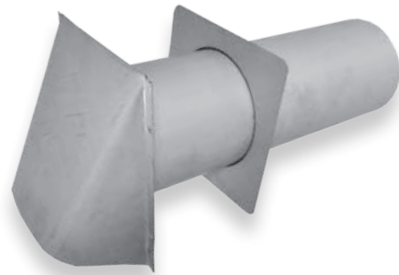
415 CANOPY VENTS



416 BLACK CANOPY VENT



880 ALUMINUM DRYER VENT



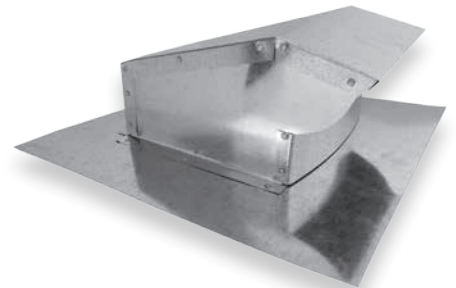
8814 4" GALVANIZED DRYER VENT, 12" TUBE



882A ALUMINUM FOUNDATION VENT
(Specify screen or damper, or both)

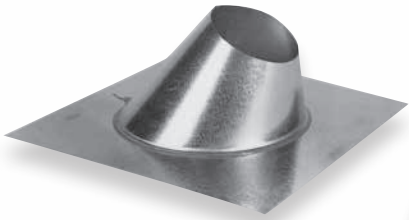


890 RECTANGLE WALL VENT



883 ROOF TOP DRYER VENT CAP

CAPS & FLASHINGS



400 ADJUSTABLE FLASHING



405 TALL CONE FLASHING



420 VENT CAP



425 CONICAL CAP



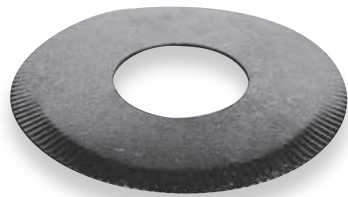
435 BELMONT CAP



448 VENT CAP-FLASHING COMBINATION



455 STORM COLLAR
(single wall)



460 CEILING PLATE



471 JOHNNY CAP ALUMINUM BLACK FINISH

Available in 2" and 3"
To Fit PVC Only

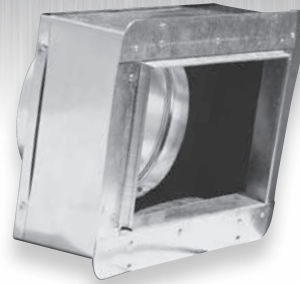
INSULATED PRODUCTS



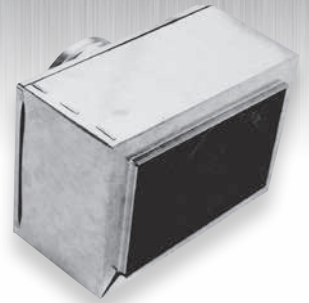
500 SLANT TOP ALL METAL (R4)
510 WITH FLANGES FOR RAILS (R4)
500R SLANT TOP ALL METAL (R6)
510R WITH FLANGES FOR RAILS (R6)



535 4" HIGH BOX (R4)
535R 4" HIGH BOX (R6)
535R8 4" HIGH BOX (R8)



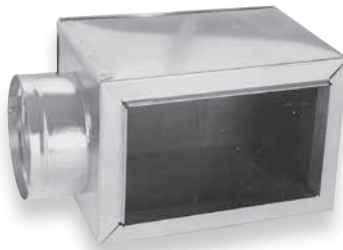
545 WITH FLANGES FOR RAILS (R4)
545R WITH FLANGES FOR RAILS (R6)
545R8 WITH FLANGES FOR RAILS (R8)



605 6" HIGH BOX, INSULATED (R4)
605R 6" HIGH BOX, INSULATED (R6)
605R8 6" HIGH BOX, INSULATED (R8)



606 6" HIGH CEILING BOX WITH TOP FLANGE (R4)
606R 6" HIGH CEILING BOX WITH TOP FLANGE (R6)
606R8 6" HIGH CEILING BOX WITH TOP FLANGE (R8)



610 9" HIGH BOX, END OUT (R4)
610R 9" HIGH BOX, END OUT (R6)
610R8 9" HIGH BOX, END OUT (R8)



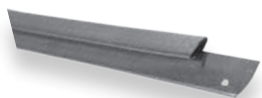
615 9" HIGH BOX, SIDE OUT (R4)
615R 9" HIGH BOX, SIDE OUT (R6)
615R8 9" HIGH BOX, SIDE OUT (R8)



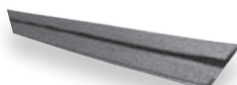
630 9" HIGH BOX, NO HOLE (R4)
630R 9" HIGH BOX, NO HOLE (R6)
630R8 9" HIGH BOX, NO HOLE (R8)

INSULATED REGISTER BOXES ARE AVAILABLE WITH R-4, R-6 OR R-8 INS. VALUES. FLANGES, DAMPERS AND RAILS AVAILABLE FOR ALL BOXES

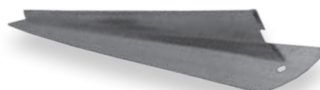
BOOT RAILS 26" LONG



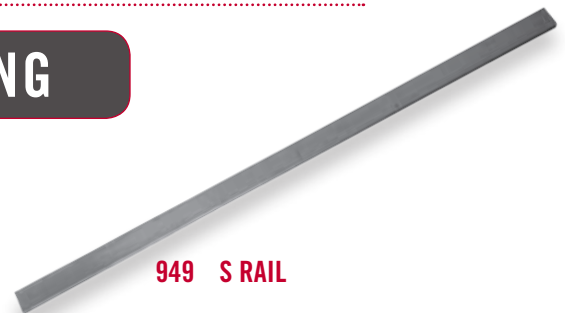
946 BOOT CLIP



947 DRIVE CLEAT



948 1" X 1/2" ANGLE RAIL



949 S RAIL

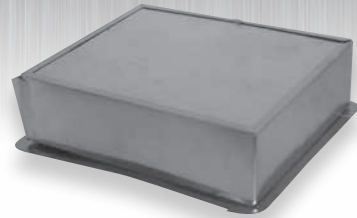
DUCT BOARD INSULATED



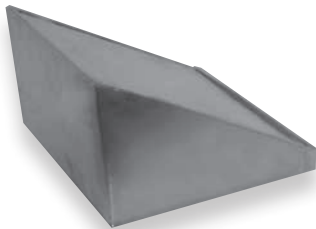
**600 (R4)
600R (R6)
DUCT BOARD INSULATED
4" TALL REGISTER BOX**



**601 (R8)
DUCT BOARD INSULATED
5 1/2" TALL REGISTER BOX**



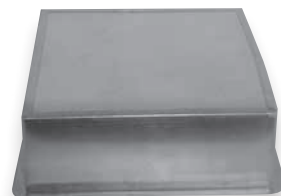
**650 (R4)
650R (R6)
DUCT BOARD INSULATED 4" TALL
REGISTER BOX W/FLANGE**



**620 (R4)
625 (R6)
SLANT TOP DUCT BOARD
INSULATED REGISTER BOX**



**640 (R4)
645 (R6)
SLANT TOP DUCT BOARD INSULATED
REGISTER BOX WITH FLANGE**

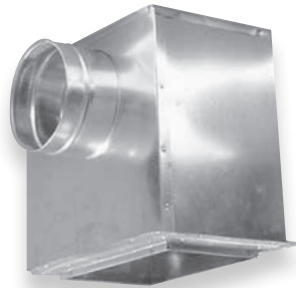


**675 (R4)
675R (R6)
RETURN AIR BOX
DUCT BOARD
INSULATED**

CEILING RADIATION BOXES WITH RADIATION DAMPERS



631 INSULATED TOP COLLAR



632 INSULATED SIDE COLLAR



633 UNINSULATED SIDE COLLAR

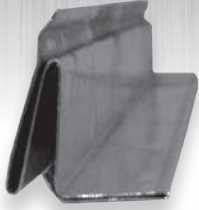


636 INSULATED TOP OUT 7.5" HIGH

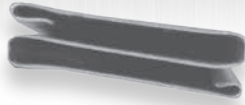


637 UNINSULATED 90 DEGREE

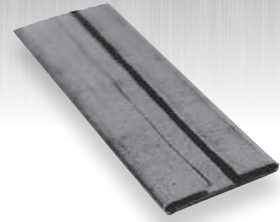
RECTANGLE DUCT ACCESSORIES



90010 STANDING "S"
10' LENGTHS



9015 5' FLAT "S"
90110 10' FLAT "S"



9025 5' DRIVE
90210 10' DRIVE



903 ANGLE 1" X 1/2"
90312 ANGLE 1" X 2"
94811 ANGLE 1" X 1"
9481515 ANGLE 1 1/2" X 1 1/2"



9208 8' LINE COVERS
92010 10' LINE COVERS



921 LINE SET
COVER CAPS



925 DRAIN PANS 26GA
With PVC Nipple
926 WELDED DRAIN PANS 22GA
With Steel Nipple

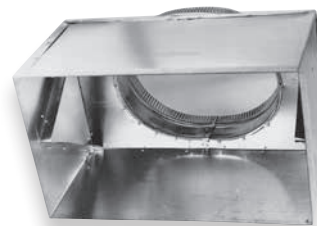


951 RECTANGULAR TRANSITION, INSULATED
952 RECTANGULAR TRANSITION, UNINSULATED



953 PLENUM, INSULATED
954 PLENUM, UNINSULATED

Shipped knocked down
Available in R6 or R8



895RA RETURN AIR BOXES
896RA RETURN AIR BOX WITH RACK

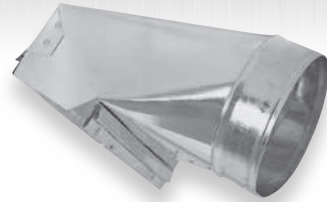
WALL STACK AND FITTINGS



760 CENTER TAPER STACK BOOT



765 OFFSET STACK BOOT



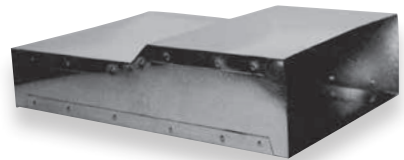
770 90° SIDE TAP STACK BOOT



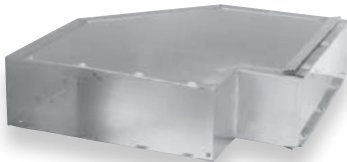
775 END TAP STACK BOOT



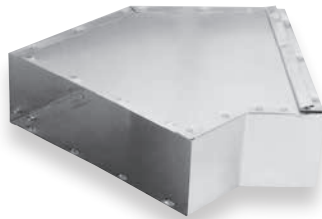
790 RECTANGULAR DUCT
Available in 2', 3', 4', 5' & 8' Lengths
Can be shipped in "L" sections



795 STRAIGHT REGISTER HEAD



810 LONG WAY ELBOWS HORIZONTAL 90°



811 LONG WAY 45° ANGLE



815 SHORT WAY ELBOWS VERTICAL 90°



816 SHORT WAY 45° ANGLE



820 SIDEWALL REGISTER HEAD 12" THROAT



791 END CAP FOR WALL STACK RECTANGULAR DUCT

TRUNK DUCT

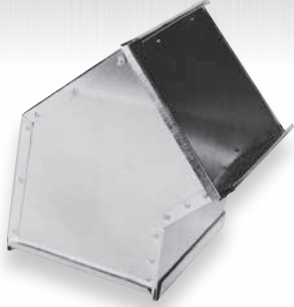


966 END CAP



967-4 48" TRUNK DUCT

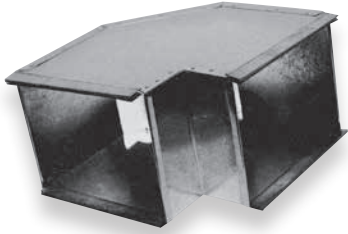
967-5 60" TRUNK DUCT



968 LONG WAY ANGLE



969 SHORT WAY 90° ELBOW



970 LONG WAY 90° ELBOW



971 SHORT WAY ANGLE



972 REDUCER ADAPTOR

CUSTOMER SERVICE

MITCHELL METAL OFFERS SUPERIOR CUSTOMER SERVICE. WHEN YOU CALL US, YOU WILL SPEAK DIRECTLY WITH A MEMBER OF OUR KNOWLEDGEABLE STAFF.

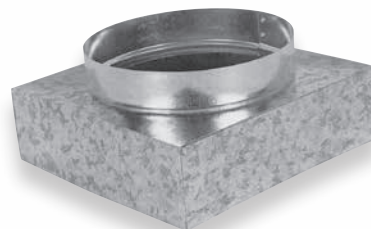
REGISTER BOOTS



700 STRAIGHT BOOT



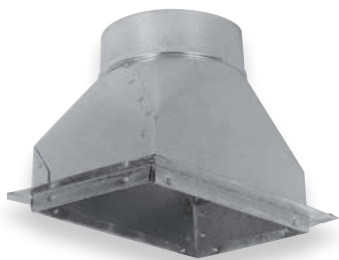
705 HEMMED BOOT



706 3" HIGH DIFFUSER BOX



**710 STRAIGHT FLOOR BOOT
1/2" FLANGE**



**720 STRAIGHT BOOT
1" FLANGE**



**725 STRAIGHT BOOT
6" EXTENSION**



**730 STRAIGHT BOOT
1" FLANGE &
6" EXTENSION**



**731 90° 6" EXTENSION BOOT
1" FLANGE**

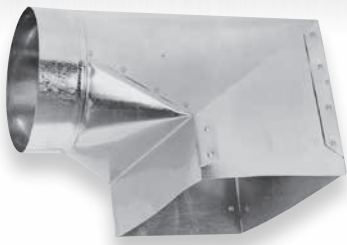


**735 STRAIGHT BOOT WITH
PAN 16" OR 25"
AVAILABLE**

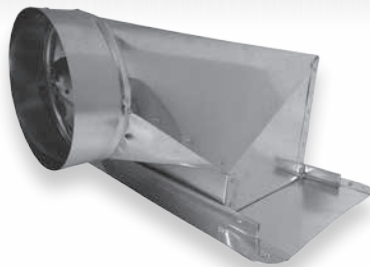


740 STRAIGHT BACK BOOT

REGISTER BOOTS



745 90° SIDE TAP



746 90° SIDE TAP
16" or 25" Flange



748 PLASTER FRAME



750 END BOOT



751 END BOOT WITH 1" FLANGE

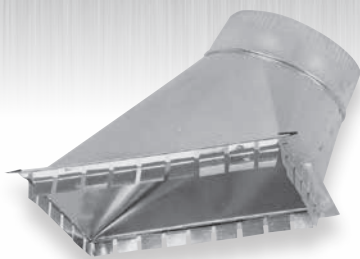


785 ROUND CEILING BOX
(Specify 16" or 25" Flg.)

SPECIALTY ITEMS

WE CAN DESIGN CUSTOM
MADE ITEMS TO MEET
YOUR REQUESTS AND
SPECIFICATIONS

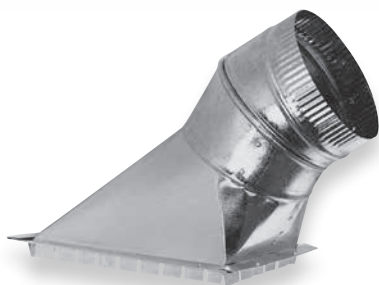
RECTANGULAR TAKE-OFF FOR METAL



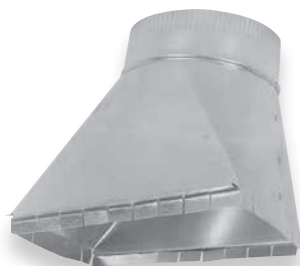
**830 45° RECTANGULAR
TAKE-OFF FOR METAL**



831 45° WITH GASKET



**840 RECTANGULAR TAKE-OFF
FOR METAL WITH
ADJUSTABLE TOP**



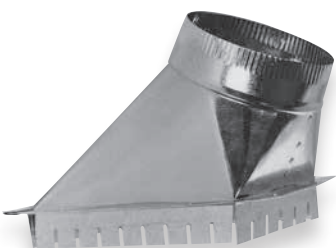
**850 STRAIGHT SIDE TAKE-OFF
FOR METAL**



851 STRAIGHT WITH GASKET

RECTANGULAR TAKE-OFF FOR DUCTBOARD

Dampers available upon request • Gaskets available on all take-offs



**835 45° RECTANGULAR TAKE-OFF
FOR DUCTBOARD**



**845 RECTANGULAR TAKE-OFF FOR
DUCTBOARD WITH ADJUSTABLE TOP**



855 STRAIGHT FOR DUCTBOARD

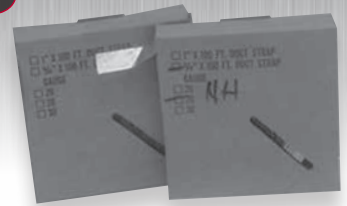
MISCELLANEOUS ITEMS



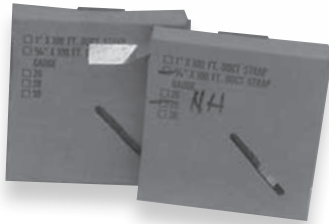
121 DRAIN PAN PLATFORM



122 GAS FURNACE PLATFORM



**961 PERFORATED HANGING STRAP
3/4" 28 GA.**



SOLID HANGING STRAP
9651 - 1" 26 GA.
9654 - 2" 26 GA.



**92210 10' UP THE WALL
DRYER STACK**



7484 4" HORIZONTAL HEATER STAND
7486 6" HORIZONTAL HEATER STAND
7488 8" HORIZONTAL HEATER STAND



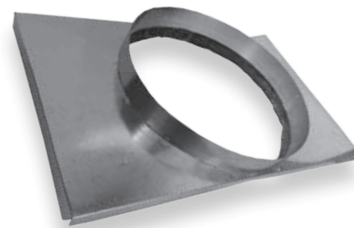
123 INSULATED DUCT ACCESS DOOR FOR METAL
124 INSULATED DUCT ACCESS DOOR FOR DUCT BOARD



ALUMINUM FOIL FLEX
8663 3" X 50'
8664 4" X 50'



896 FRESH AIR FILTER BOX, UNINSULATED
896D FRESH AIR FILTER BOX, UNINSULATED WITH DAMPER
897 FRESH AIR FILTER BOX, INSULATED
897D FRESH AIR FILTER BOX, INSULATED WITH DAMPER



SQRPCH PACKAGE UNIT TAKE-OFF



19250 Highway 12 East • P.O. Box 789
Kosciusko, Mississippi 39090

Phone: 662.289.7110 • Toll Free: 800.258.6137 • Fax: 662.289.7112

www.mitchellmetal.net



19250 Highway 12 East • P.O. Box 789
Kosciusko, Mississippi 39090

Phone: 662.289.7110 • Toll Free: 800.258.6137 • Fax: 662.289.7112

www.mitchellmetal.net