

# MITCHELL



2014 Catalog: 50814

**PIPE**

**FITTINGS**

**VENTING**

**DUCT**

19250 Highway 12 East • P.O. Box 789

Kosciusko, Mississippi 39090

Phone: 662.289.7110 • Toll Free: 800.258.6137 • Fax: 662.289.7112

[www.mitchellmetal.net](http://www.mitchellmetal.net)



## OUR COMMITMENT TO YOU

Founded in 1924 as a small town Mississippi company, Mitchell Metal Products, Inc. quickly established itself as a familiar name in the building industry. Today, Mitchell Metal remains a constant fixture in the industry as a privately-held, family-owned manufacturer of high-quality HVAC sheet metal products.

With over nine decades and three generations of experience in the manufacturing industry, Mitchell Metal knows metal. We assure you, the customer, of the best quality Single-Wall, Type B-Vent, Drain Pans, Plenums and custom metal products on the market.

Our products are made with galvanized steel ranging from 30 to 22 gauge, stainless steel and aluminum.

Items throughout this catalog are Mitchell Metal's standard HVAC products. Our standard products represent only a fraction of the items we manufacture, as our knowledgeable staff are able to accommodate our customers' many requests for custom-made items.

### **WE PROVIDE OUR CUSTOMERS WITH...**

- High-quality products
- Superior customer service
- On-time delivery
- Competitive prices

We invite you to visit our website, compare our products and talk to our customers about our services. You'll see what we've done, what we're doing and how we can serve you now. Call us to speak directly with one of our friendly staff members.

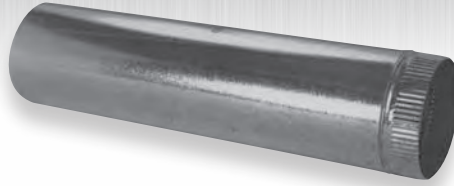
Sincerely,  
Mitchell Metal Products, Inc.



# TABLE of CONTENTS

PIPE.....	2
ELBOWS.....	2
FLEX DUCT.....	2
ANGLES.....	2
WYES.....	3
REDUCERS.....	3
TEES.....	3
TEE CAPS.....	3
DUCTBOARD STARTING COLLARS.....	4
METAL STARTING COLLARS.....	4
AIRTITE TAKE-OFFS, CONICAL AIRTITES, TAKE-OFFS FOR ROUND PIPE.....	5
DAMPERS.....	5
VENTING PRODUCTS.....	6
CAPS AND FLASHINGS.....	7
INSULATED BOXES.....	8
BOOT RAILS.....	8
DUCT BOARD INSULATED BOXES.....	9
CEILING RADIATION BOXES.....	9
RECTANGULAR DUCT ACCESSORIES.....	10
WALL STACK AND FITTINGS.....	11
STACK BOOTS.....	11
TRUNK DUCT.....	12
CEILING BOXES / REGISTER BOOTS.....	13-14
RECTANGULAR TAKE-OFF FOR METAL.....	15
RECTANGULAR TAKE-OFF FOR DUCTBOARD.....	15
MISCELLANEOUS ITEMS.....	16

## PIPE



### 105 GALVANIZED SNAPLOCK PIPE

Sizes and Lengths Available:

3" through 12" - 5' lengths 50' per bundle - 30 gauge

14" through 20" - 3' lengths 30' per bundle - 28 gauge

26 gauge and 24 gauge available upon request

## FLEX DUCT



### 130 ALUMINUM FLEXIBLE DUCT

Sizes and Lengths Available:

3" through 18" - 8' & 10' lengths

No connection attached - can be compressed

## ELBOWS



### 205 90° GALVANIZED ADJUSTABLE ELBOW

Packed in Donuts:

Sizes and Lengths Available:

3" through 10" - packed 12 per bundle

12" through 20" - packed 4 per bundle

Packed Boxed:

Sizes 4" through 10" - 12 per box

## ANGLES



### 215 45° GALVANIZED ANGLE

Sizes 3" through 20" available

# WYES • REDUCERS • TEES



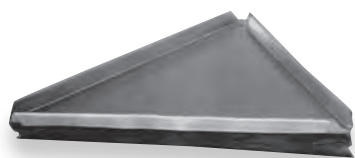
**305 STUB WYE**



**306 FREE FLOW WYE**



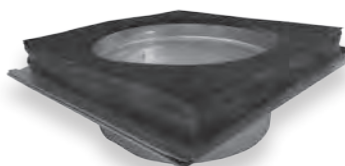
**307 BULLHEAD WYE**



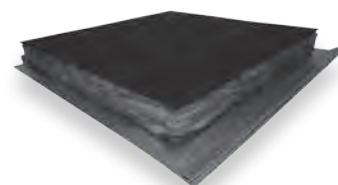
**308-C INSULATED END CAP**  
Available in R6 and R8



**308-I ASSEMBLED INSULATED WYE**  
Available in R6 and R8



**308-P UNASSEMBLED INSULATED SIDE PANEL**  
Available in R6 and R8



**308-SQ INSULATED SQUARE WYE CAP**  
Available in R6 and R8



**310 REDUCERS**



**320 TEE**



**330 TEE CAP**

## DUCTBOARD STARTING COLLARS



350 DUCTBOARD STARTING COLLAR (R6)

355 WITH DAMPER (R6)

348 DUCTBOARD STARTING COLLAR (R8)

349 WITH DAMPER (R8)



3520C SAFETY TAB STARTING COLLAR (R6)

3520CS SEALED SAFETY TAB STARTING COLLAR (R6)

35280C SAFETY TAB STARTING COLLAR (R8)



370 DUCTBOARD SPIN-IN STARTING COLLAR

375 WITH DAMPER

390 WITH SCOOP

395 WITH SCOOP AND DAMPER

## METAL STARTING COLLARS



340 METAL TAB COLLAR

345 WITH DAMPER



360 METAL SPIN-IN STARTING COLLAR

365 WITH DAMPER

380 WITH SCOOP

385 WITH SCOOP AND DAMPER



386 CONICAL SPIN-IN

387 WITH SCOOP

388 WITH DAMPER

389 WITH SCOOP AND DAMPER



916 FLEX CONNECTOR

ALL METAL AND DUCTBOARD STARTING COLLARS ARE AVAILABLE WITH:

- ECONOMY STANDOFF
- RAISED DIAL QUADRANT
- RAISED DIAL QUADRANT WITH CONTINUOUS ROD

## AIRTITE TAKE-OFFS & CONICAL AIRTITE



396 AT  
397 ATD  
399S ATS  
399 ATSD



398 AT 90°



CONICAL AIRTITE  
327 ATC  
328 ATCD  
329 ATCS  
331 ATCSD

## AIRTITE TAKE-OFFS FOR ROUND PIPE

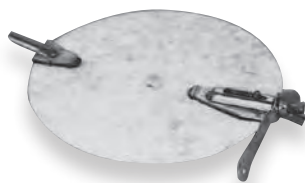


396R ATR  
397R ATRD  
399RS ATRS  
399R ATRSD

AT = AIRTITE  
S = SCOOP  
D = DAMPER  
C = CONICAL  
R = ROUND PIPE  
90 = ELBOW

ALSO AVAILABLE WITH ECONOMY  
STANDOFF, RAISED DIAL QUADRANT,  
OR RAISED DIAL QUADRANT WITH  
CONTINUOUS ROD

## DAMPERS

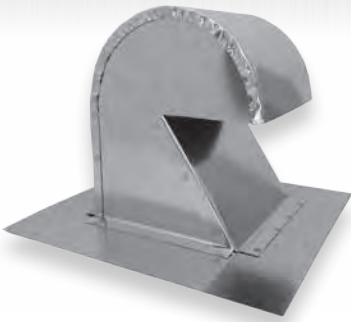


915 REGULAR DAMPER

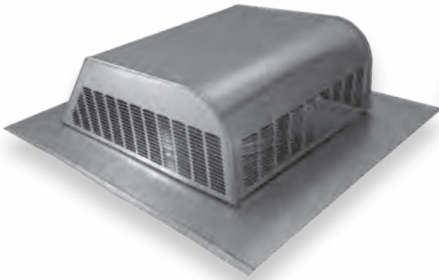


935 INLINE DAMPER

# VENTING PRODUCTS



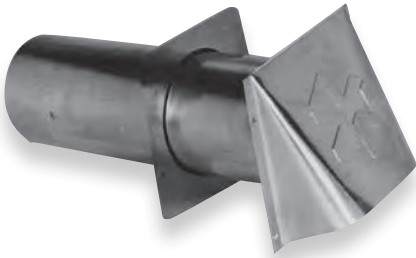
**410 FLORIDA GOOSENECK FLASHING**  
**411 FLORIDA GOOSENECK FLASHING**  
with damper



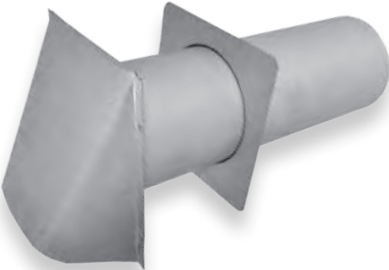
**415 CANOPY VENTS**



**416 BLACK CANOPY VENT**



**880 ALUMINUM DRYER VENT**



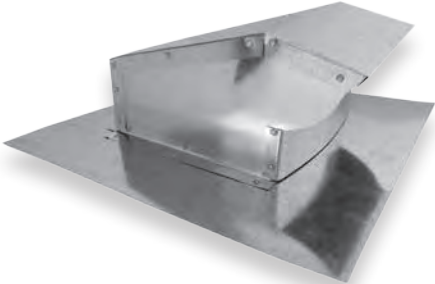
**8814 4" GALVANIZED DRYER VENT, 12" TUBE**



**882A ALUMINUM FOUNDATION VENT**  
(Specify screen or damper, or both)



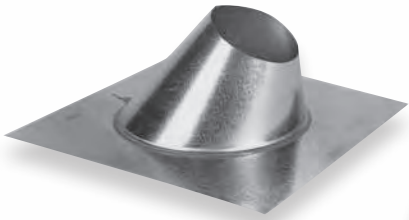
**890 RECTANGLE WALL VENT**



**883 ROOF TOP DRYER VENT CAP**



# CAPS & FLASHINGS



**400 ADJUSTABLE FLASHING**



**405 TALL CONE FLASHING**



**420 VENT CAP**



**425 CONICAL CAP**



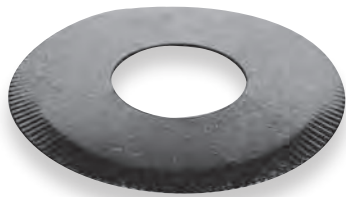
**435 BELMONT CAP**



**448 VENT CAP-FLASHING COMBINATION**



**455 STORM COLLAR**  
(single wall)



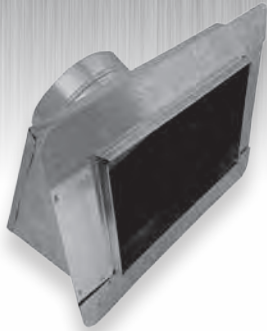
**460 CEILING PLATE**



**471 JOHNNY CAP ALUMINUM BLACK FINISH**

Available in 2" and 3"  
To Fit PVC Only

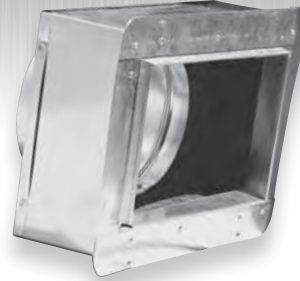
# INSULATED PRODUCTS



**500** SLANT TOP ALL METAL (R4)  
**510** WITH FLANGES FOR RAILS (R4)  
**500R** SLANT TOP ALL METAL (R6)  
**510R** WITH FLANGES FOR RAILS (R6)



**535** 4" HIGH BOX (R4)  
**535R** 4" HIGH BOX (R6)  
**535R8** 4" HIGH BOX (R8)



**545** WITH FLANGES FOR RAILS (R4)  
**545R** WITH FLANGES FOR RAILS (R6)  
**545R8** WITH FLANGES FOR RAILS (R8)



**605** 6" HIGH BOX, INSULATED (R4)  
**605R** 6" HIGH BOX, INSULATED (R6)  
**605R8** 6" HIGH BOX, INSULATED (R8)



**606** 6" HIGH CEILING BOX WITH TOP FLANGE (R4)  
**606R** 6" HIGH CEILING BOX WITH TOP FLANGE (R6)  
**606R8** 6" HIGH CEILING BOX WITH TOP FLANGE (R8)



**610** 9" HIGH BOX, END OUT (R4)  
**610R** 9" HIGH BOX, END OUT (R6)  
**610R8** 9" HIGH BOX, END OUT (R8)



**615** 9" HIGH BOX, SIDE OUT (R4)  
**615R** 9" HIGH BOX, SIDE OUT (R6)  
**615R8** 9" HIGH BOX, SIDE OUT (R8)



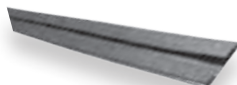
**630** 9" HIGH BOX, NO HOLE (R4)  
**630R** 9" HIGH BOX, NO HOLE (R6)  
**630R8** 9" HIGH BOX, NO HOLE (R8)

INSULATED REGISTER BOXES ARE AVAILABLE WITH R-4, R-6 OR R-8 INS. VALUES. FLANGES, DAMPERS AND RAILS AVAILABLE FOR ALL BOXES

# BOOT RAILS 26" LONG



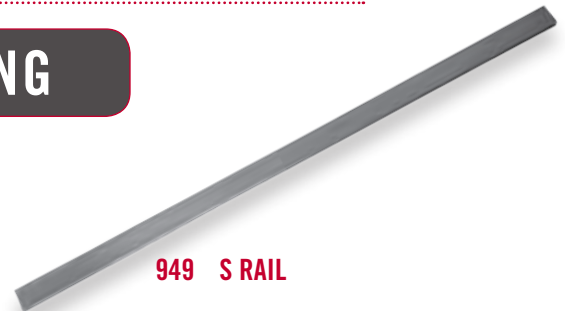
**946** BOOT CLIP



**947** DRIVE CLEAT



**948** 1" X 1/2" ANGLE RAIL



**949** S RAIL

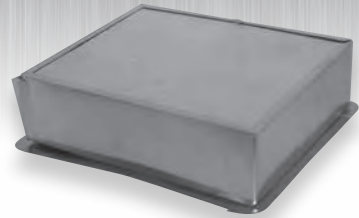
# DUCT BOARD INSULATED



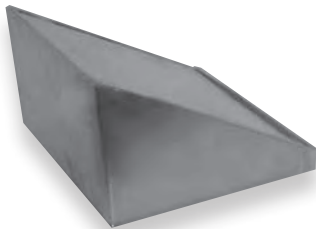
**600 (R4)  
600R (R6)  
DUCT BOARD INSULATED  
4" TALL REGISTER BOX**



**601 (R8)  
DUCT BOARD INSULATED  
5 1/2" TALL REGISTER BOX**



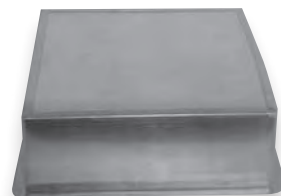
**650 (R4)  
650R (R6)  
DUCT BOARD INSULATED 4" TALL  
REGISTER BOX W/FLANGE**



**620 (R4)  
625 (R6)  
SLANT TOP DUCT BOARD  
INSULATED REGISTER BOX**



**640 (R4)  
645 (R6)  
SLANT TOP DUCT BOARD INSULATED  
REGISTER BOX WITH FLANGE**

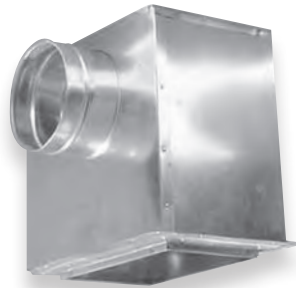


**675 (R4)  
675R (R6)  
RETURN AIR BOX  
DUCT BOARD  
INSULATED**

# CEILING RADIATION BOXES WITH RADIATION DAMPERS



**631 INSULATED TOP COLLAR**



**632 INSULATED SIDE COLLAR**



**633 UNINSULATED SIDE COLLAR**

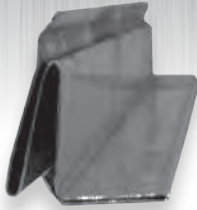


**636 INSULATED TOP OUT 7.5" HIGH**

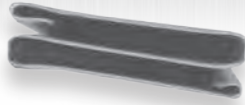


**637 UNINSULATED 90 DEGREE**

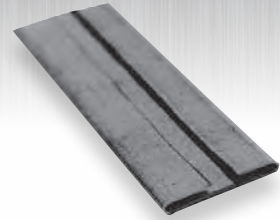
# RECTANGLE DUCT ACCESSORIES



**90010** STANDING "S"  
10' LENGTHS



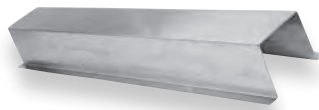
**9015** 5' FLAT "S"  
**90110** 10' FLAT "S"



**9025** 5' DRIVE  
**90210** 10' DRIVE



**903** ANGLE 1" X 1/2"  
**90312** ANGLE 1" X 2"  
**94811** ANGLE 1" X 1"  
**9481515** ANGLE 1 1/2" X 1 1/2"



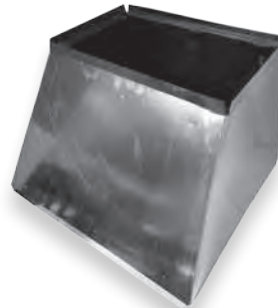
**9208** 8' LINE COVERS  
**92010** 10' LINE COVERS



**921** LINE SET  
COVER CAPS



**925** DRAIN PANS 26GA  
With PVC Nipple  
**926** WELDED DRAIN PANS 22GA  
With Steel Nipple



**951** RECTANGULAR TRANSITION, INSULATED  
**952** RECTANGULAR TRANSITION, UNINSULATED



**953** PLENUM, INSULATED  
**954** PLENUM, UNINSULATED

Shipped knocked down  
Available in R6 or R8



**895RA** RETURN AIR BOXES  
**896RA** RETURN AIR BOX WITH RACK

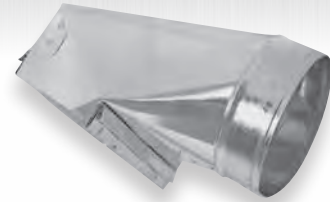
# WALL STACK AND FITTINGS



**760 CENTER TAPER STACK BOOT**



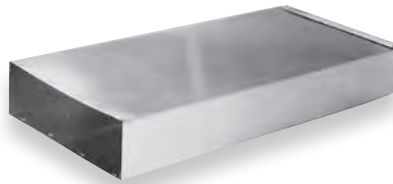
**765 OFFSET STACK BOOT**



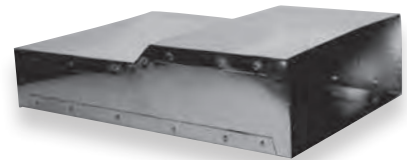
**770 90° SIDE TAP STACK BOOT**



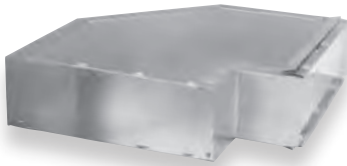
**775 END TAP STACK BOOT**



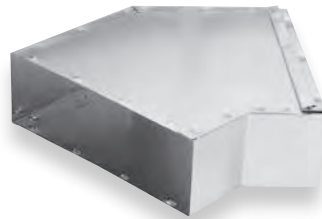
**790 RECTANGULAR DUCT**  
Available in 2', 3', 4', 5' & 8' Lengths  
Can be shipped in "L" sections



**795 STRAIGHT REGISTER HEAD**



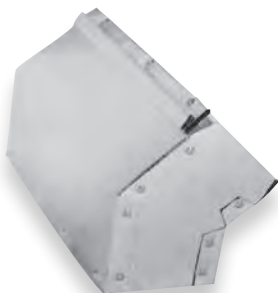
**810 LONG WAY ELBOWS HORIZONTAL 90°**



**811 LONG WAY 45° ANGLE**



**815 SHORT WAY ELBOWS VERTICAL 90°**



**816 SHORT WAY 45° ANGLE**

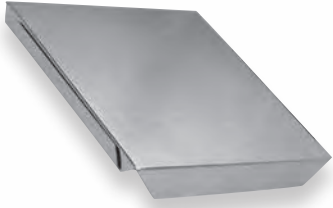


**820 SIDEWALL REGISTER HEAD 12" THROAT**



**791 END CAP FOR WALL STACK RECTANGULAR DUCT**

# TRUNK DUCT

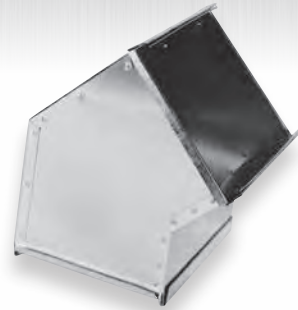


966 END CAP



967-4 48" TRUNK DUCT

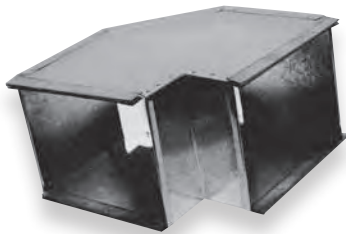
967-5 60" TRUNK DUCT



968 LONG WAY ANGLE



969 SHORT WAY 90° ELBOW



970 LONG WAY 90° ELBOW



971 SHORT WAY ANGLE



972 REDUCER ADAPTOR

**CUSTOMER SERVICE**

MITCHELL METAL OFFERS SUPERIOR CUSTOMER SERVICE. WHEN YOU CALL US, YOU WILL SPEAK DIRECTLY WITH A MEMBER OF OUR KNOWLEDGEABLE STAFF.

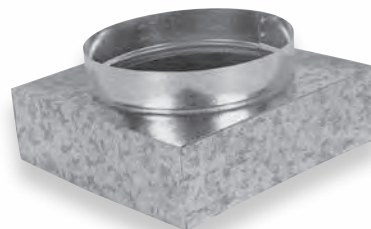
# REGISTER BOOTS



**700 STRAIGHT BOOT**



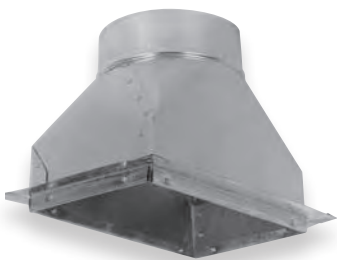
**705 HEMMED BOOT**



**706 3" HIGH DIFFUSER BOX**



**710 STRAIGHT FLOOR BOOT  
1/2" FLANGE**



**720 STRAIGHT BOOT  
1" FLANGE**



**725 STRAIGHT BOOT  
6" EXTENSION**



**730 STRAIGHT BOOT  
1" FLANGE &  
6" EXTENSION**



**731 90° 6" EXTENSION BOOT  
1" FLANGE**

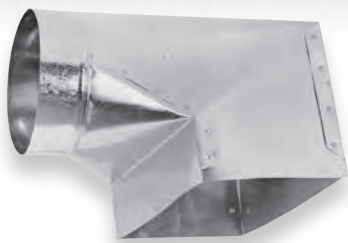


**735 STRAIGHT BOOT WITH  
PAN 16" OR 25"  
AVAILABLE**

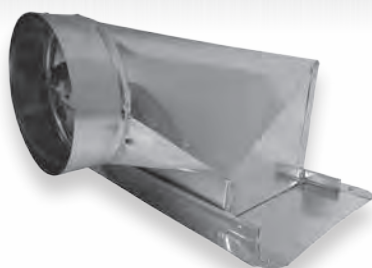


**740 STRAIGHT BACK BOOT**

# REGISTER BOOTS



**745 90° SIDE TAP**



**746 90° SIDE TAP**  
16" or 25" Flange



**748 PLASTER FRAME**



**750 END BOOT**



**751 END BOOT WITH 1" FLANGE**



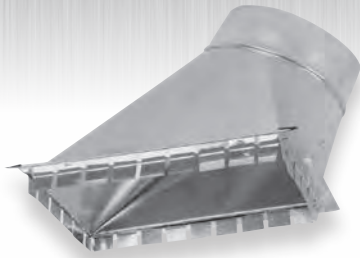
**785 ROUND CEILING BOX**  
(Specify 16" or 25" Flg.)

## SPECIALTY ITEMS

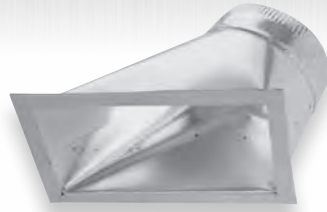
WE CAN DESIGN CUSTOM  
MADE ITEMS TO MEET  
YOUR REQUESTS AND  
SPECIFICATIONS



## RECTANGULAR TAKE-OFF FOR METAL



**830 45° RECTANGULAR  
TAKE-OFF FOR METAL**



**831 45° WITH GASKET**



**840 RECTANGULAR TAKE-OFF  
FOR METAL WITH  
ADJUSTABLE TOP**



**850 STRAIGHT SIDE TAKE-OFF  
FOR METAL**



**851 STRAIGHT WITH GASKET**

## RECTANGULAR TAKE-OFF FOR DUCTBOARD

Dampers available upon request • Gaskets available on all take-offs



**835 45° RECTANGULAR TAKE-OFF  
FOR DUCTBOARD**

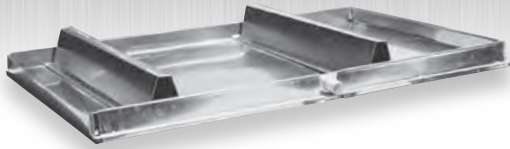


**845 RECTANGULAR TAKE-OFF FOR  
DUCTBOARD WITH ADJUSTABLE TOP**



**855 STRAIGHT FOR DUCTBOARD**

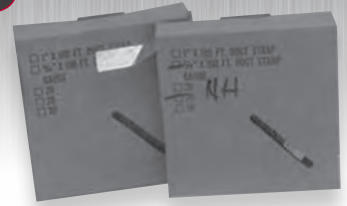
# MISCELLANEOUS ITEMS



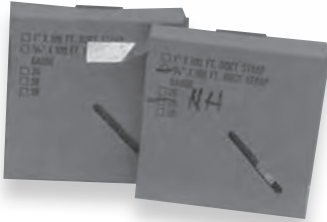
**121 DRAIN PAN PLATFORM**



**122 GAS FURNACE PLATFORM**



**961 PERFORATED HANGING STRAP  
3/4" 28 GA.**



**SOLID HANGING STRAP**  
9651 - 1" 26 GA.  
9654 - 2" 26 GA.



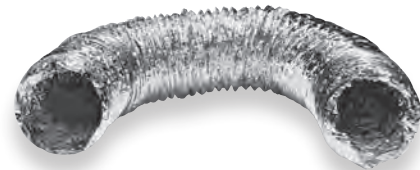
**92210 10' UP THE WALL  
DRYER STACK**



7484 4" HORIZONTAL HEATER STAND  
7486 6" HORIZONTAL HEATER STAND  
7488 8" HORIZONTAL HEATER STAND



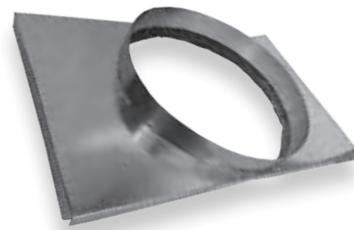
123 INSULATED DUCT ACCESS DOOR FOR METAL  
124 INSULATED DUCT ACCESS DOOR FOR DUCT BOARD



**ALUMINUM FOIL FLEX**  
8663 3" X 50'  
8664 4" X 50'



896 FRESH AIR FILTER BOX, UNINSULATED  
896D FRESH AIR FILTER BOX, UNINSULATED WITH DAMPER  
897 FRESH AIR FILTER BOX, INSULATED  
897D FRESH AIR FILTER BOX, INSULATED WITH DAMPER



**SQRPCH PACKAGE UNIT TAKE-OFF**



19250 Highway 12 East • P.O. Box 789  
Kosciusko, Mississippi 39090

Phone: 662.289.7110 • Toll Free: 800.258.6137 • Fax: 662.289.7112

[www.mitchellmetal.net](http://www.mitchellmetal.net)



19250 Highway 12 East • P.O. Box 789  
Kosciusko, Mississippi 39090

Phone: 662.289.7110 • Toll Free: 800.258.6137 • Fax: 662.289.7112

[www.mitchellmetal.net](http://www.mitchellmetal.net)