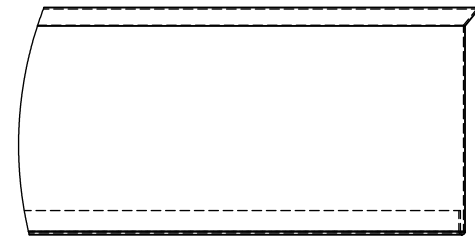
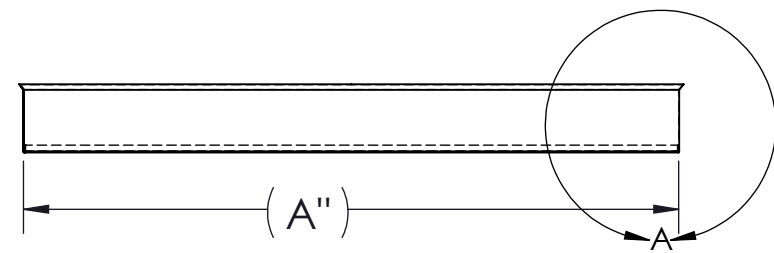


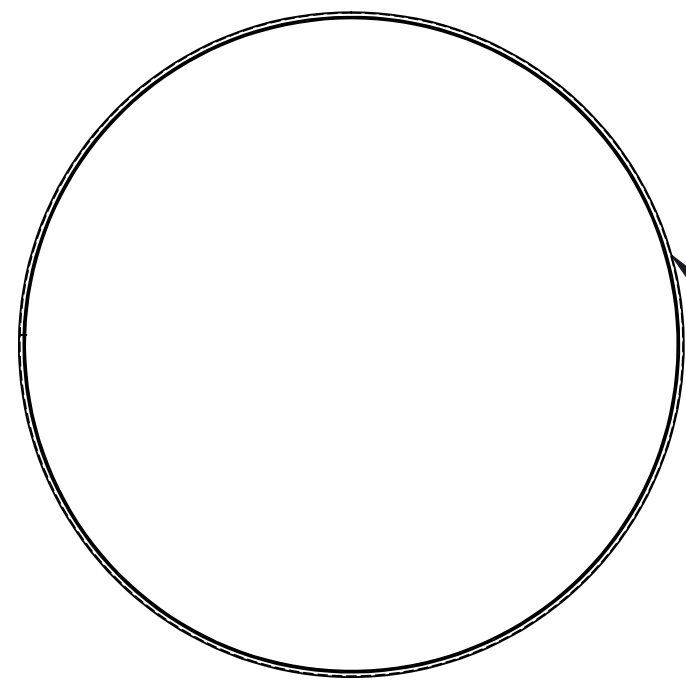
ITEM NUMBER	MATERIAL	DIM. A	DIM. B	DIM. C
300EC(SIZE)	30 GA. GALVANIZED	4-14"	DIM A. + $\frac{3}{16}$ "	2"
300EC(SIZE)	28 GA. GALVANIZED	16-20"	DIM A. + $\frac{3}{16}$ "	$1\frac{3}{4}$ "



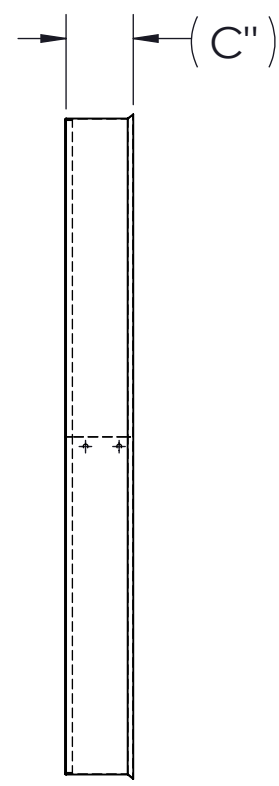
DETAIL A
SCALE 1 : 1.5



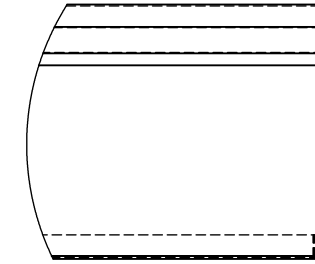
FOR SIZE 16"-20"



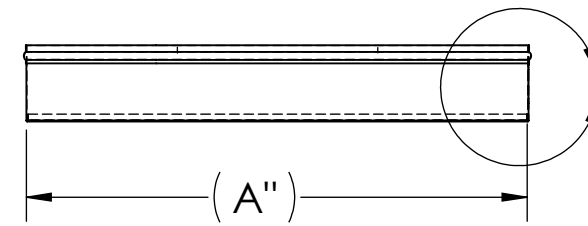
(B")



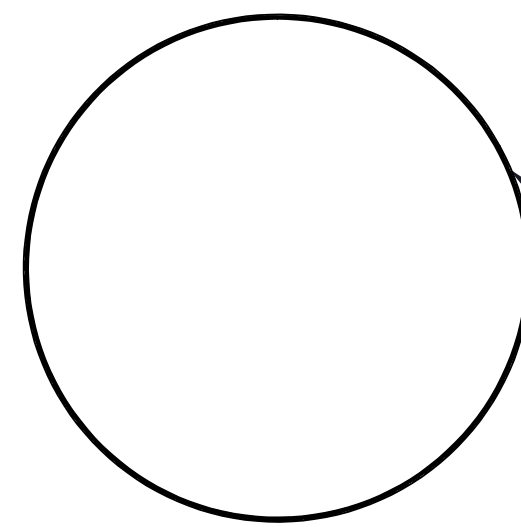
(C")



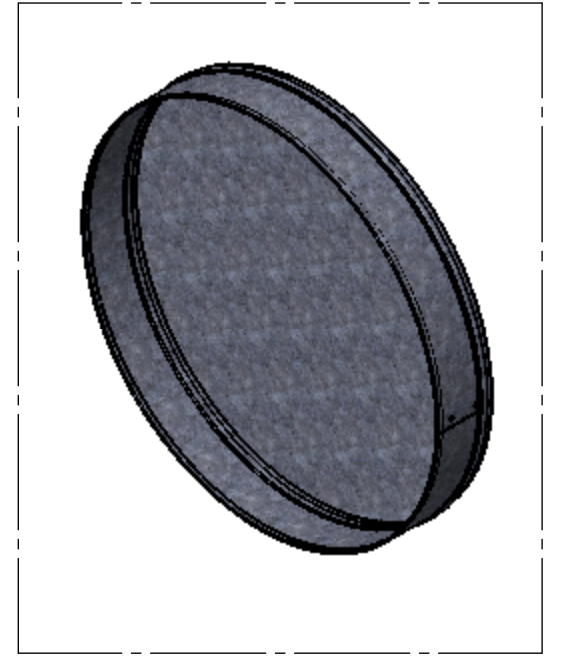
DETAIL B
SCALE 1 : 1.5



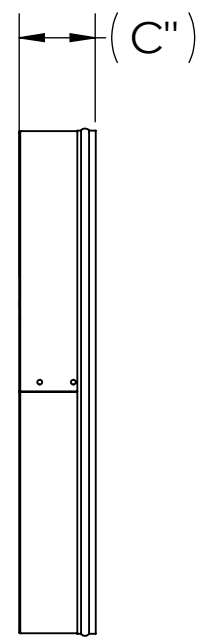
FOR SIZE 4"-14"



(B")

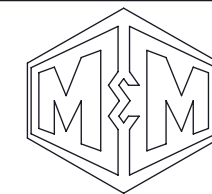


PERSPECTIVE VIEW



(C")

NOTE: M&M RESERVES THE RIGHT TO INCREASE THE GAGE OF COMPONENT PARTS.



M&M MFG.CO.,INC.
4001 MARK IV PKWY.
P.O.BOX 163409
FORT WORTH, TX.76161
PH. (817) 336-2311
FAX.(817) 625-5193

CONFIDENTIAL

THIS DOCUMENT IS THE CONFIDENTIAL PROPRIETARY INFORMATION OF M&M MFG. CO. AND SHALL NOT BE DISCLOSED, COPIED, OR USED FOR ANY PURPOSE OTHER THAN FOR WHICH THIS DOCUMENT IS SPECIFICALLY FURNISHED WITHOUT PRIOR WRITTEN CONSENT AND APPROVAL OF M&M MFG. CO.

Part title		EC (4"-20")	
Proj. title		END CAP	
Tolerances Unless Otherwise Specified X.XXXX ±.0005; X.XXX ±.002; X.XX ±.01 Fractional ± $\frac{1}{16}$ " Angles ±0° 15'			
Dr. by	J. GONZALEZ	Date	10/17/2011
Ck. by	P. WYATT	Date	10/17/2011
App. by	K. HIGHLAND	Date	10/17/2011
Part no.	300EC(SIZE)		
Scale	xx:xx	Asst#	xxxx-xxxx
Sheet	xx of xx	Size	(C)