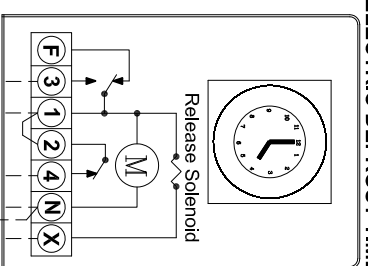
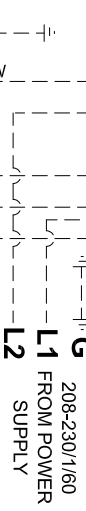


**NOTE:** PER MFG. INSTRUCTIONS, THE TIME SWITCH IS PROGRAMMED BY PUSHING THE CAPTIVE TRIPPERS TO THE INNER RING POSITION FOR THE ENTIRE PERIOD THAT THE LOAD IS IN THE NORMAL OPERATING CYCLE. WHEN A TRIPPER IS PUSHED TO THE OUTSIDE, THE SWITCH IS IN THE "DEFROST" POSITION. EACH TRIPPER EQUALS 15 MINUTES OF TIMED ELECTRIC DEFROST.

**ELECTRIC DEFROST TIMER**



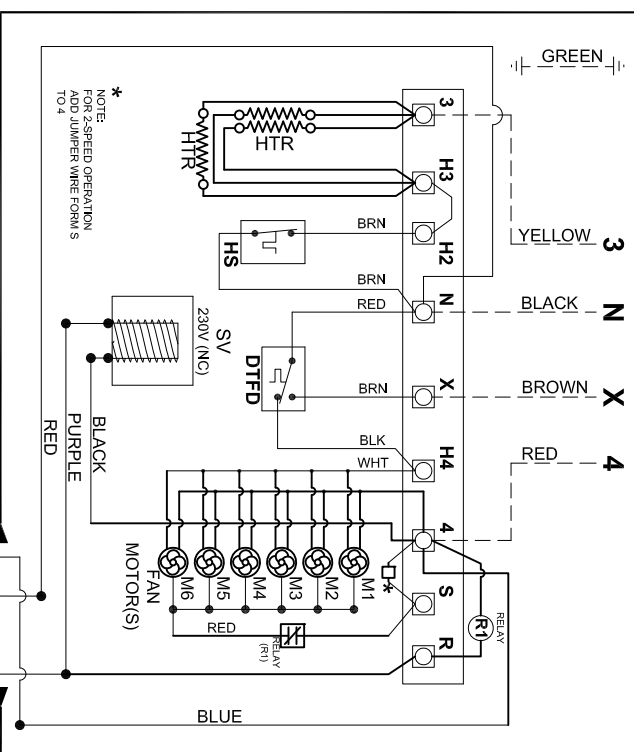
**TIMER TO SHIP LOOSE FOR FIELD INSTALLATION.**



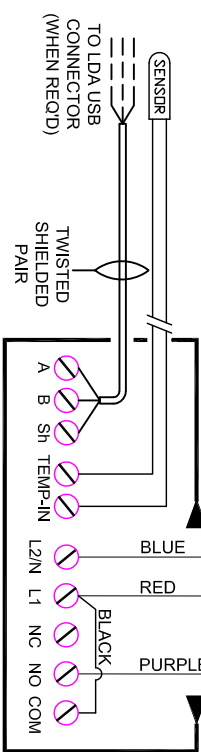
**WIRE TO EVAPORATOR COIL**

FIELD WIRING  
FACTORY WIRING

**WIRE TO ELECTRIC DEFROST TIMER**



**UNIT COOLER 208-230/1/60**



**ELECTRONIC TEMPERATURE CONTROL**

SYSTEM COMPONENTS ARE INSTALLED AND WIRED, WITH FINAL WIRING CONNECTIONS MADE IN THE EVAPORATOR WIRING COMPARTMENT.

**WIRING DIAGRAM - ELECTRIC DEFROST EVAPORATOR w/ELECTRONIC TEMPERATURE CONTROL & ELECTRIC DEFROST TIMER 208-230/1/60**

**EVAPORATOR MODEL:**

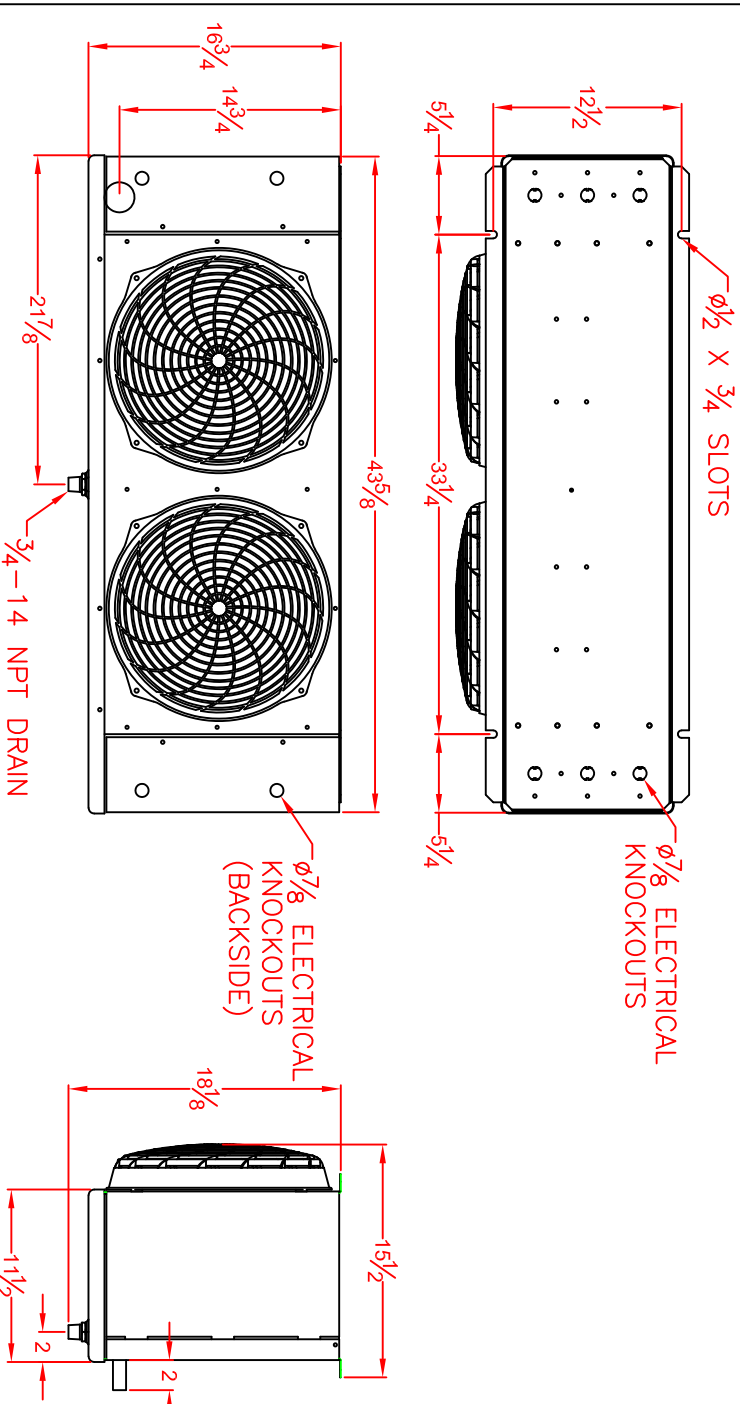
DEFROST TYPE	MODEL	MFG REFRIG	BTUH	FAN 1Ø		DEFROST HEATERS		SUCTION	LIQUID	WEIGHT (lbs.)	DRAIN LINE	DEFROST TIMER	CONTROLS		
				AMP	V	AMP	V						TSTAT	SQL VAL	EXP VAL
A	EL26-066-2P-PR-4	RDI R404A	6,600	1.0	230	9.8	230	1	7/8" ODF	3/8" ODF	3/4" MPT	X	X	X	X
B	EL26-077-2P-PR-4	RDI R404A	7,700	1.0	230	9.8	230	1	7/8" ODF	3/8" ODF	3/4" MPT	X	X	X	X
C	EL26-090-2P-PR-4	RDI R404A	9,000	1.0	230	9.8	230	1	7/8" ODF	3/8" ODF	3/4" MPT	X	X	X	X
D	EL26-105-2P-PR-4	RDI R404A	10,500	1.0	230	9.8	230	1	7/8" ODF	3/8" ODF	3/4" MPT	X	X	X	X

**LEGEND:**  
 O=Off Cycle,  
 A=Air w/Timer  
 B=Electric Defrost

POWER SUPPLY: 208-230/1/60  
 TOTAL CONNECTED LOAD AMPS: 9.8A  
 MINIMUM CIRCUIT AMPACITY: 15A  
 MAXIMUM OVERCURRENT PROTECTION: 20A

**CONNECTION SIZES**

**ACCESSORIES**



**EVAPORATOR DETAIL**

**ITEMS PROVIDED INCLUDE:**

1. L.L. Solenoid Valve (Installed-Evap)
2. Expansion Valve (Installed-Evap)
3. Digital Temperature Control (Installed-Evap)

DATE	REVISION RECORD	AUTH	DR	CK

EL 2 Fan Unit Cooler Models  
 208/230V, PSC Motors, R404A

SCALE: NONE  
 DATE: 07.16.2018

**RDI Systems**

DRAWING NUMBER: EL 2 Fan, 208/230, PSC Motors, R404A  
 RDI QUOTE NO.:  
 DRAWING DATE: 07.16.2018