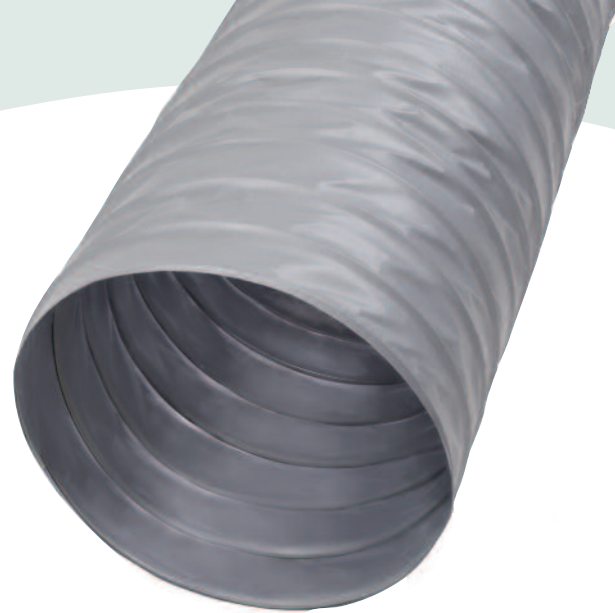




S-LP-10 FLEXIBLE AIR CONNECTOR



S-LP-10 Features and Benefits:

- Reduced total installed cost—fast, economical installation.
- Core material will not support mold and mildew growth.
- Long standard lengths help reduce waste—easily cut to exact lengths, or spliced, at the job.
- Easily shaped to fit oval inlets.
- Underwriters Laboratories Listed.
- Large diameter, heavy, spring steel wire helix assures dimensional stability, resists mechanical abuse and provides more efficient air delivery.
- All components of are self-extinguishing and will not support a flame (see oxygen index figures under application and engineering data).
- Complies with NFPA Standards 90A and 90B and most local, state, and federal standards or codes.
- Maintenance free under normal conditions—highly resistant to rust and corrosion.
- Strict quality control over all raw materials and completed ducts.
- Will not balloon at recommended operating pressure.
- Unique construction will not unravel when cut.
- “Outward Cast” of heavy spring steel wire keeps duct from shrinking up, resulting in better air flow and less waste.
- Suitable for all bathroom and dryer venting applications.
- Will not collapse at recommended operating pressure.
- Assists absorbing system vibration transmitted through ductwork.
- Packaged compactly for efficient transporting, storing and handling.
- Available through broad national distribution.
- Clean room approved by Intel Worldwide.
- GreenGuard Certified for children and schools.



GreenGuard Certified
for Superior Indoor
Air Quality



www.thermaflex.net

www.greenguard.com

National Sales Headquarters

P.O. Box 927 (381 Carwellyn Rd.)
Abbeville, SC 29620
800-459-4822
Fax 800-459-3828

Canada

4610 Eastgate Parkway, Unit 3
Mississauga, Ontario L4W 3W6
905-602-9660
Fax 905-602-9665

APPLICATIONS:

Thermaflex® S-LP-10 non-insulated Class I connector is designed for use in all pressure cooling and heating systems. It is used in either supply or return sections: for branch ducts and duct connections to or between mixing units, induction units, control or terminal units, and diffusion devices, including light troffers. Thermaflex S-LP-10 duct provides economical means for handling misalignment between system components and ducts around obstacles where fabricated and fitted ducts are difficult and costly to install. This duct is equally useful when making system extensions or changing conditioned zones now or in the future. Thermaflex S-LP-10 duct offers further economy of installed cost, for example, as a return duct within conditioned spaces or in any zone where the function of insulated duct is not required.



A division of Flex-Tek Group, a subsidiary of Smiths Group, plc.



S-LP-10

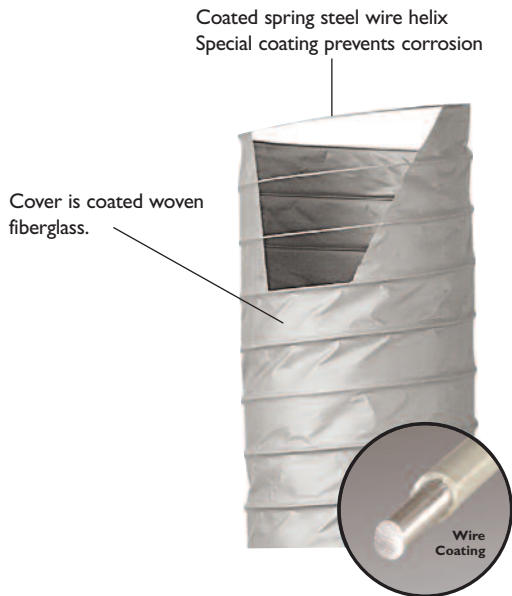
Non-Insulated Flexible Air Connector
for All Pressure Systems

APPLICATIONS and ENGINEERING DATA:

Nominal Inside Diameter (inches):	2	3	4	5	6	7	8	9	10	12	14
Length (feet):	25	25	25	25	25	25	25	25	25	25	25
Inside Bend Radius (inches):	2	3	4	5	6	7	8	9	10	12	14
Operating Pressure (inches water column):	Positive = 10 inches						Negative = 1 inch				
Maximum Leakage (cubic ft./min./linear ft./in. diameter) At 10 inch water column:	0.015										
Internal Operating Temperature Range (°F):	Minimum = -20						Maximum = 250				
Velocity (feet per minute):	5000										
Surface Burning Characteristics:	Max. Flame Spread = 25						Max. Smoke Developed = 50				
Oxygen Index Ratings:	Woven and Coated Glass Cloth Fabric = 35.60										

Construction and Materials:

The supporting helix of coated spring steel wire is permanently bonded to a coated woven fiberglass cover.



Suggested Specification:

Flexible air duct for connections between _____ and _____ shall be Thermaflex S-LP-10 duct rated for a maximum of 10" water column positive and 1" water column negative and maximum velocity of 5000 FPM and Listed by Underwriters Laboratories, Inc., under UL Standard 181 as a Class I connector and complying with NFPA Standards 90A and 90B. Thermaflex S-LP-10 air duct shall be factory fabricated of coated spring steel wire helix permanently bonded to a coated woven fiberglass cover.

10 Year Warranty:

Thermaflex warrants that all insulated and non-insulated products will be free from defects in materials and factory workmanship for a period of ten years from the date of manufacture. This warranty covers the flexible duct, materials and labor. This warranty applies only to ducts properly installed in accordance to Thermaflex's written installation instructions and under conditions specified in published performance data. Thermaflex shall not be liable to buyer or any third party for any special, secondary, incidental or consequential damages however arising.

