

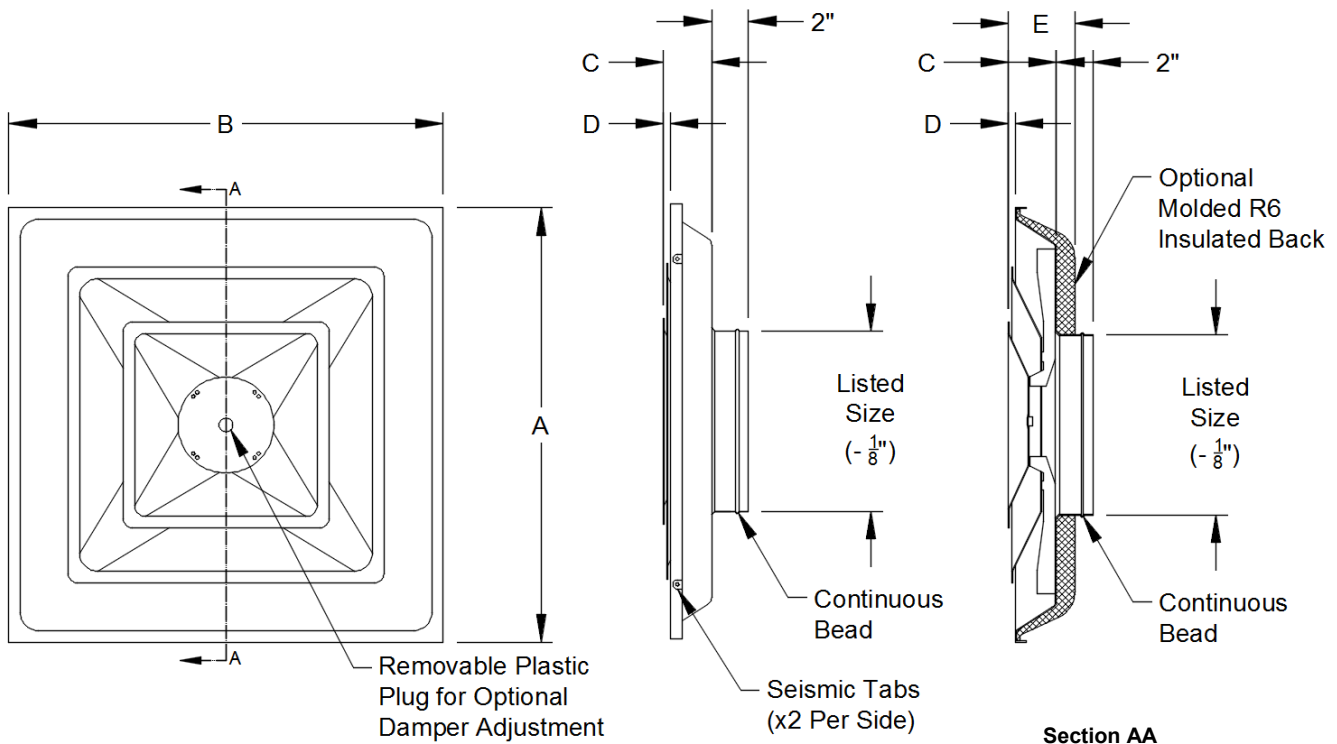
Model: \_\_\_\_\_ Size: \_\_\_\_\_ Tag: \_\_\_\_\_

Project Name: \_\_\_\_\_

Project Location: \_\_\_\_\_

Engineer: \_\_\_\_\_ Contractor: \_\_\_\_\_

Distributor: \_\_\_\_\_ Representative: \_\_\_\_\_



**Features:**

- Truair Super Collar
- Pristine White Powder Coat Finish

**Construction Options:**

- 2013CD (12" x 12" Module)
- 2003CD (24" x 24" Module)
- Steel
- Aluminum (Only available on the 2003CD)
- R6 Molded Insulated Back
- Butterfly Damper
- Radial Damper

Nominal Module Size	Dimensions				
	"A"	"B"	"C"	"D"	"E"
12" x 12"	11 3/4"	11 3/4"	1 1/4"	1/16"	2 1/4"
24" x 24"	23 3/4"	23 3/4"	2 5/8"	3/8"	3 5/8"

**2013CD Available Round Neck Diameters (IN):**

8

**2003CD Available Round Neck Diameters (IN):**

6, 8, 10, 12 and 14

Note: This submittal is meant to demonstrate the general dimensions of this product. The illustrations are not meant to detail every aspect of the product. Drawings are not to scale. T.A. Industries, Inc. reserves the right to make changes without notice or obligations.