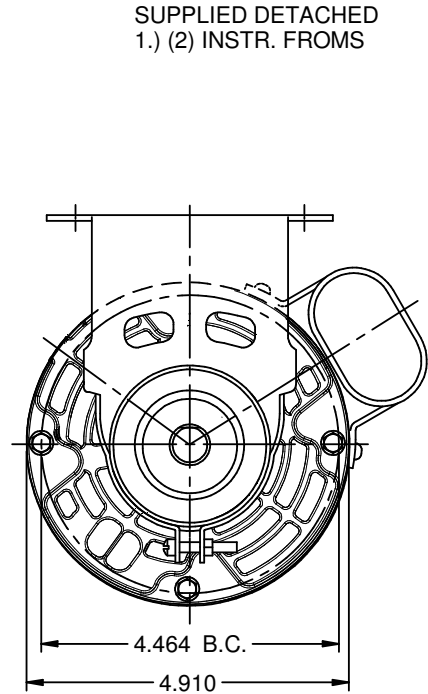
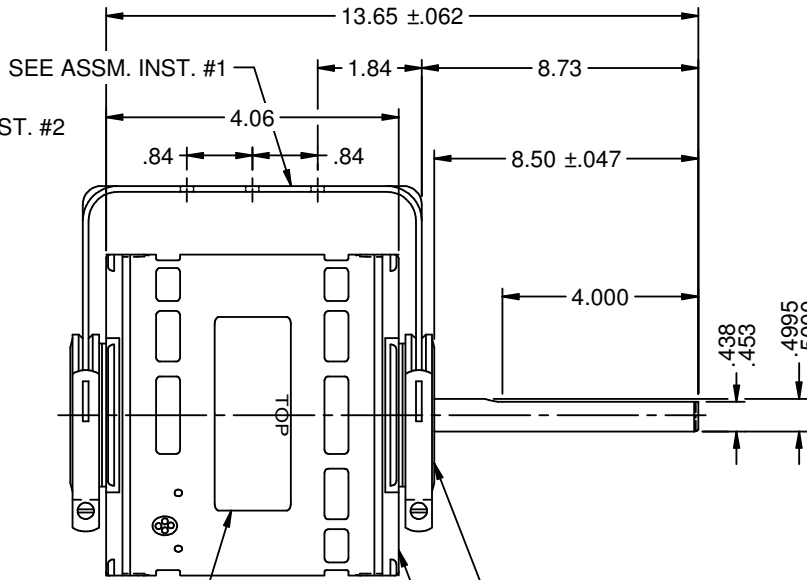
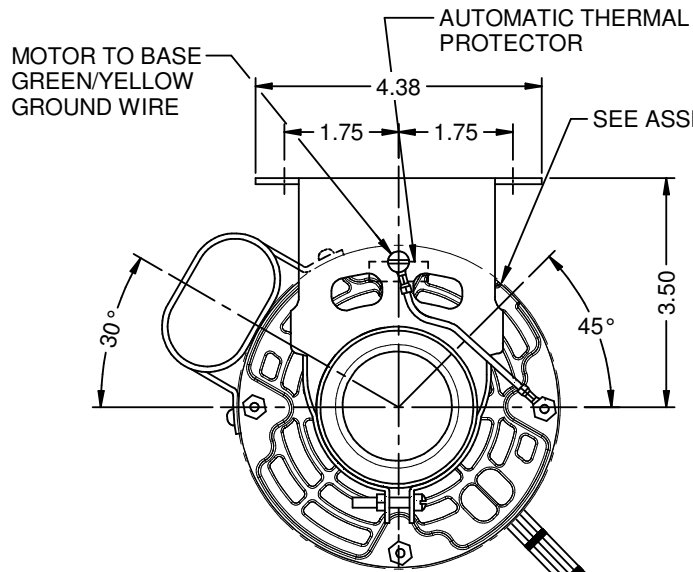


MODEL	REF	CUSTOMER	HP	VOLTS	AMPS	HZ	RPM	ROTATION	CUSTOMER PN	DESCRIPTION / REMARKS
K48ZZTT-1374		STANDARD	1/30	115	.50	60	1100/3 SPD	CW LEAD END	1374	

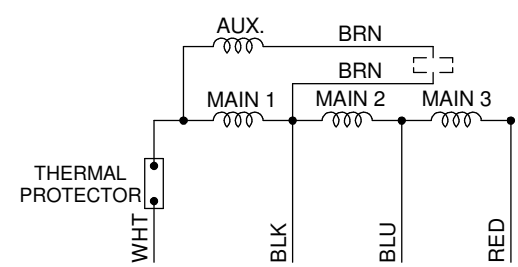


.375 SKINNED

4 LEADS .031 INSUL TO EXTEND BEYOND MOTOR
 BLACK= 37.000+3-0, RED= 37.000+3-0
 WHITE= 37.000+3-0, BLUE=37.000+3-0
 LEADS TO BE TIE WRAPPED EVERY 10.000

OIL SLING TO BE PLACED IN OPERATING POSITION AGAINST FACE OF BEARING HUB

OPEN SHIELD (BOTH ENDS)



COLOR CODE
 WHITE - COMMON
 BLACK - HIGH
 BLUE - MEDIUM
 BROWN - CAPACITOR

INCLUDES 5.0 MFD 370-VAC CAPACITOR

REFER TO S.E.I.M. 24-1

NIDEC MOTOR CORPORATION 23-May-17

REVISION RECORD FOR: E28697	
NEW DRAWING.	
ISSUED BY: B. ANDRADE	ENGINEER APPROVED: H. NAVARRO

DIMENSIONS ARE FOR REFERENCE ONLY

UNLESS TOLERANCE IS SPECIFIED

NIDEC MOTOR CORPORATION				
INFORMATION DISCLOSED ON THIS DOCUMENT IS CONSIDERED PROPRIETARY AND SHALL NOT BE REPRODUCED OR DISCLOSED WITHOUT WRITTEN CONSENT OF NIDEC MOTOR CORPORATION				
TITLE		CODE	ITEM NO.	REVISION DATE:
CUSTOMER DETAIL DRAWING		V02	815675	18-MAY-17
REV	SHEET NUMBER	DWG SIZE		
-	1 OF 3	B		