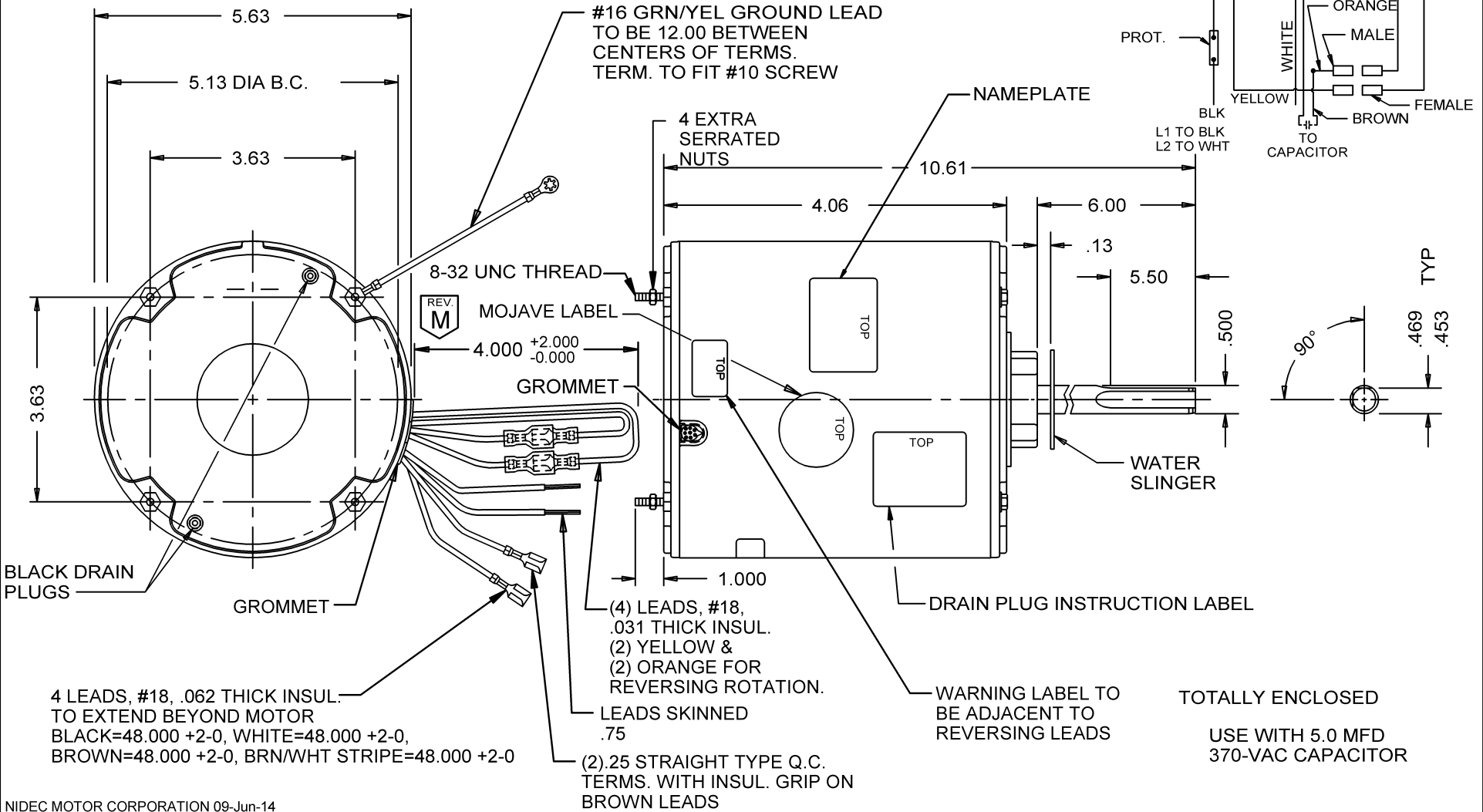


ROTATION IS C.CW VIEWING LEAD END WITH
ORG. TO ORG. & YEL. TO YEL. TO REVERSE
ROTATION INTERCHANGE ORG. & YEL. LEADS



NIDEC MOTOR CORPORATION 09-Jun-14

| MODEL | REF | CUSTOMER | HP | VOLTS | AMPS | HZ | RPM | ROTATION | CUSTOMER PN |
|--------------|-----|----------|-----|---------|------|----|------|-------------------|-------------|
| K55HXWEG-624 | | STANDARD | 1/4 | 208-230 | 1.7 | 60 | 1075 | CCW LEAD END REV. | 1860H |

| SHEET NUMBER | REV | REVISION RECORD FOR: D1317-00 |
|---------------|-----|--|
| 1 OF 1 | M | CHANGED TOLERANCE ON REVERSIBLE LEADS. |
| REVISION DATE | | |
| 09-JUN-14 | | |

INFORMATION DISCLOSED ON THIS DOCUMENT IS CONSIDERED PROPRIETARY AND SHALL NOT BE REPRODUCED OR DISCLOSED WITHOUT WRITTEN CONSENT OF NIDEC MOTOR CORPORATION

NIDEC MOTOR CORPORATION

| ISSUED BY | REVIEWED BY | ENGINEER APPROVED |
|------------|-------------|-------------------|
| B. ANDRADE | B. GAITAN | B. GAITAN |

| TITLE | CODE | ITEM NO. | SIZE |
|----------------|------|----------|------|
| ASSEMBLED VIEW | V01 | 772003 | A |