

AUTOMATIC THERMAL PROTECTOR

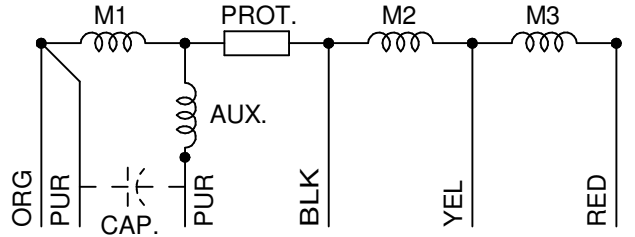
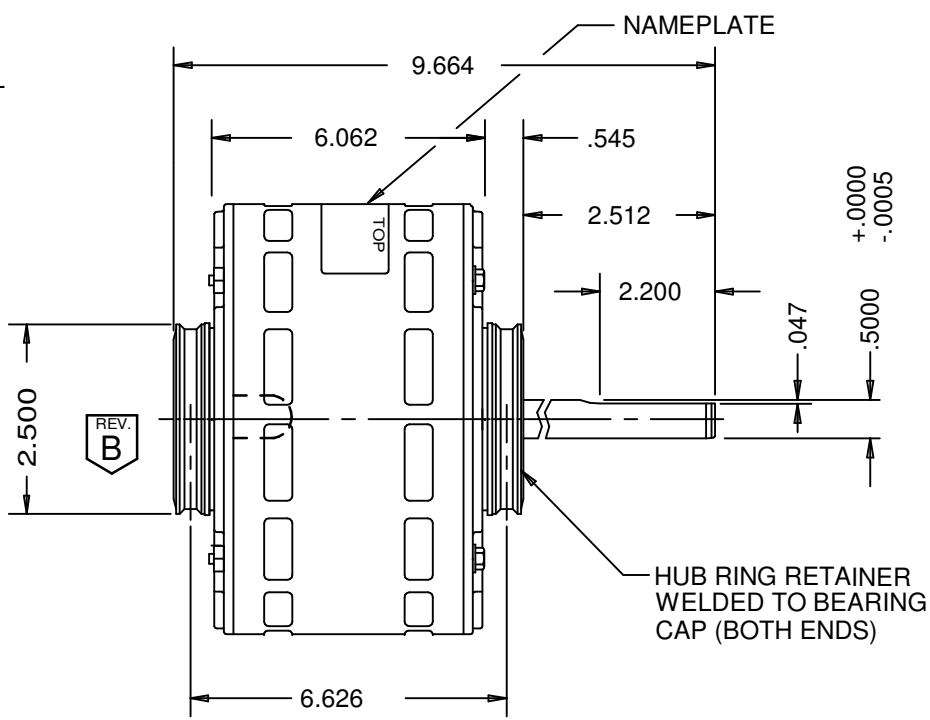
REV. B

(4) .250 STRAIGHT TYPE Q.C. TERMS WITH INSUL GRIP

(2) .250 STRAIGHT TYPE Q.C. TERMS. WITH BLUE NYLON 6/6 HOUSING ON PUR. LEADS.

(6) LEADS, #16, .062 THICK 105°C PVC 35D DUROMETER INSUL. TO EXTEND BEYOND MOTOR  
 BLK.=36.000+3-0, RED=36.000+3-0  
 ORG.=36.000+3-0, YEL=36.000+3-0  
 PUR.=24.000+2-0, PUR=24.000+2-0

CLASS "B" INSULATION



NIDEC MOTOR CORPORATION 29-Apr-13

MODEL	REF	CUSTOMER	HP	VOLTS	AMPS	HZ	RPM	ROTATION	CUSTOMER PN
K55HXTPA-9657		STANDARD	1/2	208-230	4.4	60	825/3SPD	C.C.W. LEAD END	CAT 8064

SHEET NUMBER	REV	REVISION RECORD FOR: C7481-00
1 OF 1	B	UPDATED EXIT OF LEADS AND ADDED U-NOTCH
REVISION DATE		
22-APR-13		

INFORMATION DISCLOSED ON THIS DOCUMENT IS CONSIDERED PROPRIETARY AND SHALL NOT BE REPRODUCED OR DISCLOSED WITHOUT WRITTEN CONSENT OF NIDEC MOTOR CORPORATION

**NIDEC MOTOR CORPORATION**

ALL DIMENSIONS ARE FOR REFERENCE ONLY UNLESS TOLERANCE IS GIVEN

ISSUED BY	REVIEWED BY	ENGINEER APPROVED
A. SANCHEZ	L. VILLARREAL	J. VEHIGE

TITLE	CODE	ITEM NO.	SIZE
ASSEMBLED VIEW	V01	748307	A